



Jubilee Rise

Tickow Lane
Shepshed
Loughborough
LE12 9EY

T: 01509 272 755
E: jubileerise.nmid@persimmonhomes.com
persimmonhomes.com/jubilee-rise

Head Office

Persimmon Homes North Midlands
Davidson House
Meridian East, Meridian Business Park
Leicester
LE19 1WZ

T: 0116 281 5600
E: nmid.sales@persimmonhomes.com
persimmonhomes.com



Issue: May 2023 Ref: 250-194

Persimmon plc, Registered office: Persimmon House, Fulford, York YO19 4FE Registered in England no: 1818486

Jubilee Rise is a marketing name only. The copyright in this document and design is confidential to and the property of Persimmon Homes Developments 2023. These details are intended to give a general idea of the type of home but they do not form part of any specification or contract. The dimensions are approximate and may vary depending on internal finish. By the time you read this some of the details may have changed because of the Persimmon Homes policy of continually updating and improving design features. Therefore, please be sure to check the plan and specification in the sales office to keep you up-to-date with the latest improvements. The vendors of this property give notice that: (i) the particulars are produced in good faith, are set out as a general guide only and do not constitute any part of a contract; (ii) no person in the employment of Persimmon Homes or their authorised agents has any authority to make or give any representation or warranty whatever in relation to this property.



Persimmon

Together, we make your home



Jubilee Rise

Shepshed • Loughborough

Together, we make your home

When it comes to designing a new development, we apply the same philosophy every time – make it unique, make it personal. That’s because we understand your new home is more than simply bricks and mortar. It’s a private place of sanctuary where we hope you’ll laugh, entertain and escape for many years to come.

“We have over 50 years of building expertise, find out more about us on page 4”



5 stars!

We're proud of our 5 star builder status awarded by the national Home Builders Federation (HBF). It's a reflection of our commitment to delivering excellence always and putting our customers at the heart of all we do.



Jubilee Rise

Find out more

About Persimmon Homes	4
Your journey with us and schemes to help	6
Living at Jubilee Rise	8
Our homes	10
Specifications	24
Sustainability	26
Personalise with Finishing Touches	28
Reasons to buy from us	30



Who we are

A little bit about us

You're about to make one of the most exciting investments of your life! A beautiful place to call home for years to come. Here are some reasons to invest in a Persimmon home.

Over 50 years of expertise

We've been building homes and communities since the early seventies, and just as fashions have moved on, so too has construction. Over half a century we've perfected processes, fine-tuned materials and honed skills to make us one of today's most modern and progressive home builders.

Sustainability mission

We're committed to reducing our impact on the planet and building for a better tomorrow, with a dedicated in-house team focused on this. [Read more on page 26](#)

Persimmon in numbers

It's not all about numbers we know, but to give you sense of scale here are a few:

14,868

homes
sold in
2022

200+

locations
across
the UK

5000+

employees
make it all
happen

700+

apprentices
taken on
each year

£505.6m

invested in
local communities
in 2022



“Building sustainable homes and community hubs”

Save money on your energy bills

The increased thermal retention from our insulation and double glazing, along with reduced water use thanks to efficient appliances, mean you'll automatically save money on your energy and water bills – and with the rising cost of living, this can make a real difference.



Take a look at the recently published HBF Watt a Save report to find out how much you could save.



Real Living Wage

We're proud to be accredited to the Real Living Wage. We value our employees and want to pay them fairly for the good work they do.

Like to know more? Just scan the QR code below.



Giving back

We do everything we can to give back to our communities and proudly contribute towards community hubs, children's play areas, schools and sports facilities.

Our 'Community Champions' and 'Building Futures' programmes help to raise funds for projects and charities across Great Britain. If you'd like to get involved visit persimmonhomes.com/community-champions to see if you could apply to support your local community.



Happy hour

We run Customer Construction Clinics from our on-site sales offices each Monday from 5-6pm. Pop in to see the team both during and after you've moved in to your new home.



10-year warranty

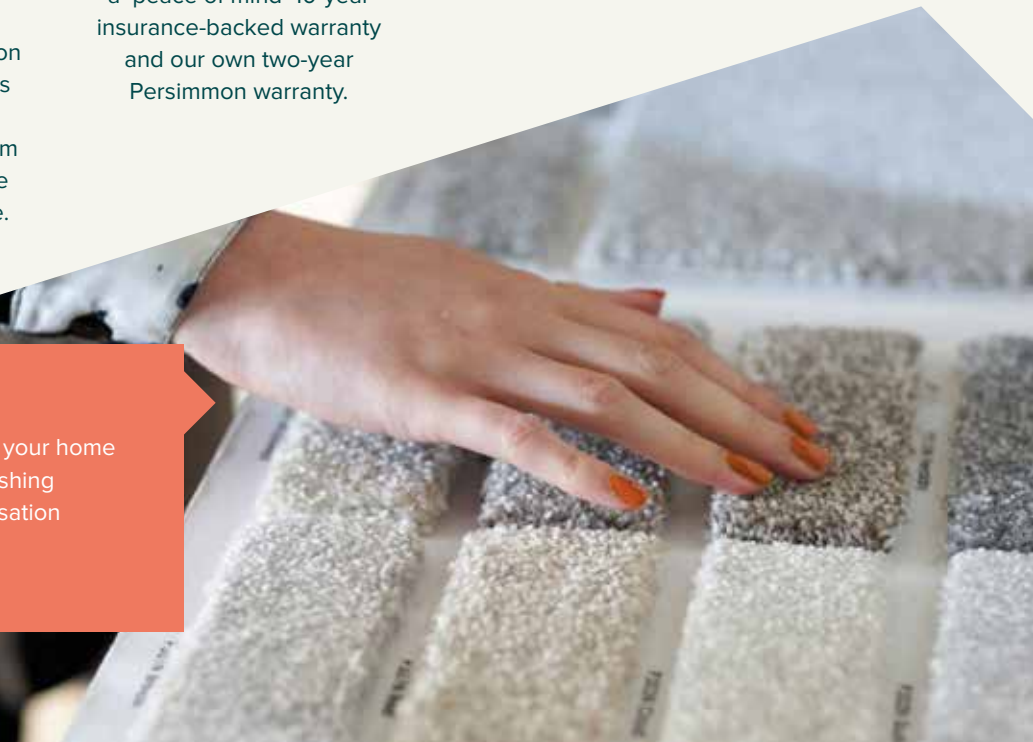
When you buy a Persimmon home it comes complete with a 'peace of mind' 10-year insurance-backed warranty and our own two-year Persimmon warranty.



Help when you need it

You'll have a dedicated customer care helpline, plus cover for emergencies like complete loss of electricity, gas, water or drainage.

Finishing Touches
 We know you'll want to make your home your own, so we created 'Finishing Touches', our home personalisation service.
Read more on page 28





With you all the way

Your journey with us

From finding your perfect new home to moving in, we're here to help every step of the way.

1.→ 2.→ 3.

Reservation

So you've seen a home you love? Speak to one of our friendly sales advisors who will help you secure your dream home.

Solicitor

You'll need to instruct a solicitor or conveyancer at the point of reservation. Your sales advisor can recommend a local independent company.

Mortgage application

Most people will need to apply for a mortgage. We can recommend independent financial advisors to give you the best impartial advice.

4.→ 5.→ 6.

Personalise!

The bit you've been waiting for! Making the final choices for your new home. Depending on build stage you can also choose from a range of Finishing Touches.

Exchange contracts

One step closer to moving in – this is where we exchange contracts and your solicitor will transfer your deposit.

Quality assurance

Your home will be thoroughly inspected by site teams and will also have an Independent Quality Inspection to make sure it's ready for you to move into.

7.→ 8.→ 9.

Home demo

Another exciting milestone! Here's where you get to see your new home before completion. You'll be shown how everything works and any questions can be answered.

Handover

The moment you've been waiting for! The paperwork has been completed, the money transferred and now it's time to move in and start unpacking...

After-care

Our site and customer care teams will support you every step of the way. You'll receive a dedicated customer care line number to deal with any issues.

[persimmonhomes.com](https://www.persimmonhomes.com)



Need help?

One of the best things about buying a new-build home is the amazing offers and schemes you could benefit from. T&Cs apply.



**PART
EXCHANGE**

Part Exchange

Need to sell your home? We could be your buyer. Save money and time and stay in your home until your new one completes.



**HOME
CHANGE**

Home Change

Sell your current home with our support. We'll take care of estate agent fees and offer expert advice to help get you moving.



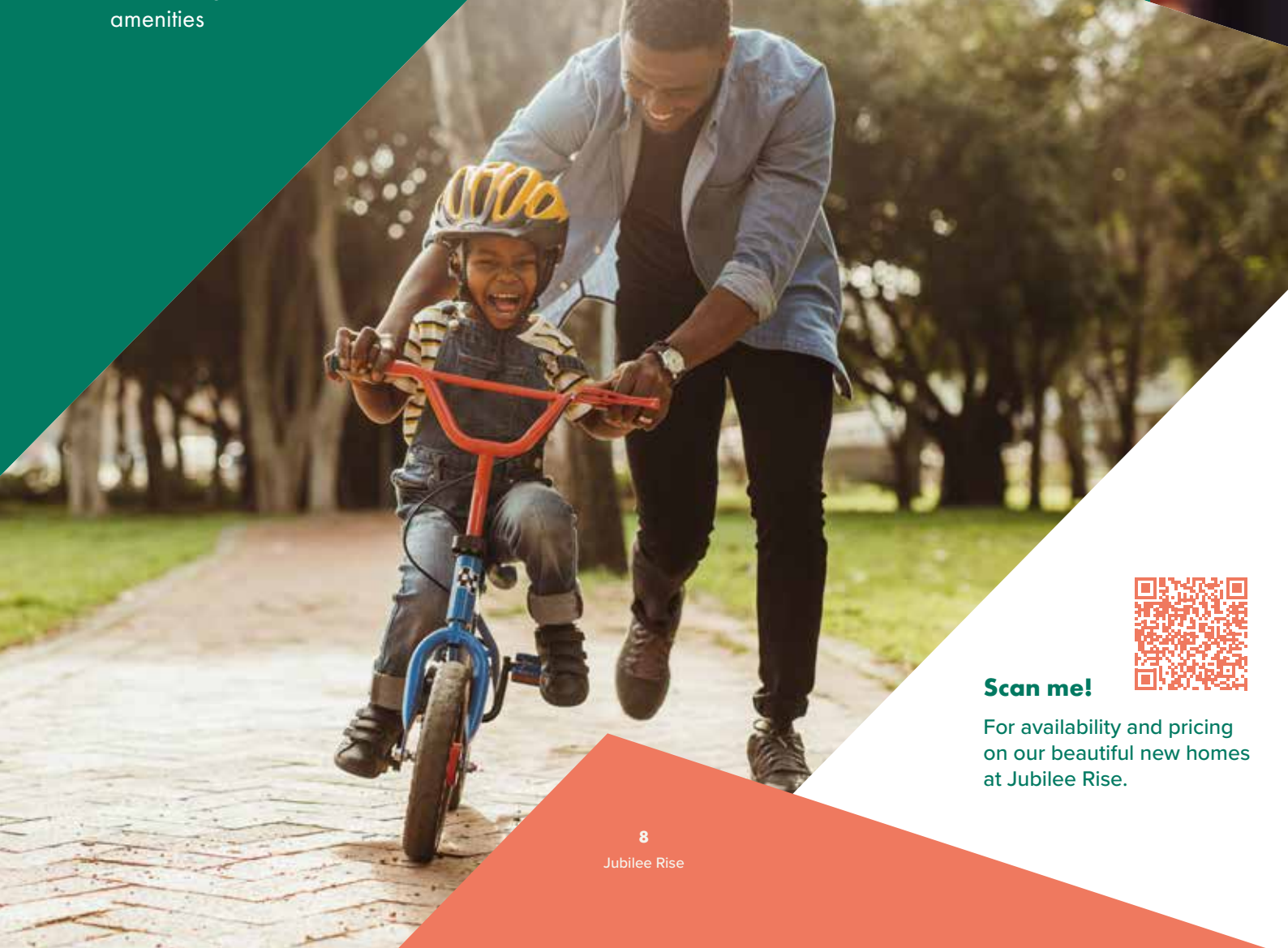
**EARLY
BIRD**

Early Bird

If you've found a plot that's perfect for you, the Early Bird Scheme could be just what you need to secure your dream home.



- Choice of 2, 3, 4-bedroom homes
- Just over 5 miles from Loughborough train station
- Close to Loughborough, Leicester, Nottingham and Derby
- Good range of local amenities



Scan me!

For availability and pricing on our beautiful new homes at Jubilee Rise.



Shepshed • Loughborough

Jubilee Rise

Located in the popular and vibrant town of Shepshed, Jubilee Rise is a collection of two, three and four-bedroom homes, perfect for first-time buyers or families.

Shepshed is a charming market town located between Loughborough and Ashby-de-la-Zouch. Once a village that was a centre for the wool trade, the town now offers a range of diverse businesses and enterprises and is a popular base for those commuting to nearby Loughborough and the university cities of Nottingham and Leicester. The town is within easy reach of attractions such as Donnington Grand Prix track, the National Space Centre, Twycross Zoo and Beacon Hill Country Park, which is set in 335 acres of glorious woodland, grassland and wildflower meadows.

Jubilee Rise is surrounded by stunning countryside and green open spaces, yet close to a wealth of amenities. You'll be

close to everything you need for day-to-day living including a number of local supermarkets, two Post Offices, doctor's surgeries, several schools and a great choice of pubs and restaurants. For even more choice, Loughborough is just 5 miles away offering excellent shopping, entertainment and leisure facilities.

Handy transport links

Jubilee Rise is excellently positioned for travel - the development is situated on the main route connecting Ashby-de-la-Zouch and Loughborough, putting both towns a 15-minute drive away. The proximity to Junction 23 of the M1 means Nottingham and Leicester can be reached in just half an hour, while Birmingham is a 44-minute drive away. The nearest train station is a short journey away in Loughborough, just 6.1 miles away.

EXPLORE

Start exploring...

Loughborough
5.1 miles

Loughborough train station
6.1 miles

Leicester
13.8 miles

Nottingham
18.7 miles



Jubilee Rise

Our homes

2 bedroom

 The Danbury

3 bedroom

 The Galloway

 The Charnwood

 The Barnwood

 The Whinfall

4 bedroom

 The Rivington

 The Greenwood

 The Marston

 The Brampton

 The Kielder

 The Seacombe

 Affordable Housing

 Wheelchair Accessible





This site layout is intended for illustrative purposes only, and may be subject to change, for example, in response to market demand, ground conditions or technical and planning reasons. Trees, planting and public open space shown are indicative, actual numbers and positions may vary. This site plan does not form any part of a warranty or contract. Further information is available from a site sales advisor.

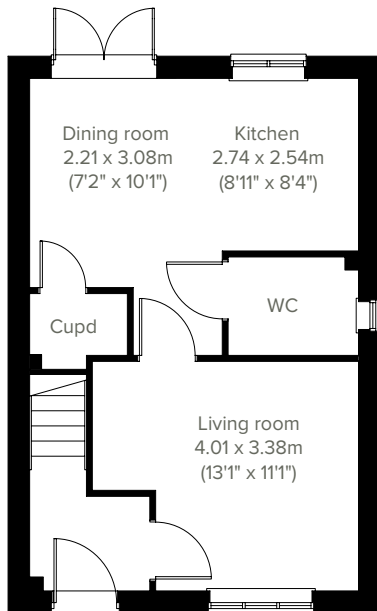


2 bedroom home

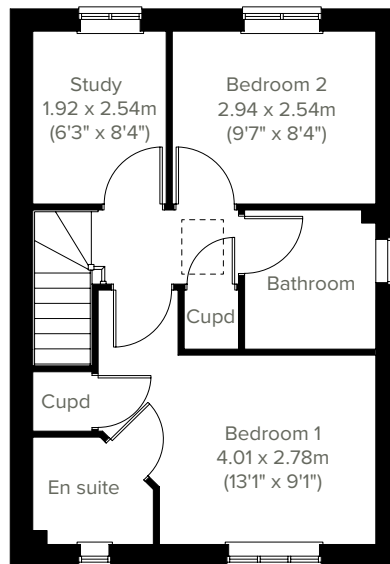
The Danbury



Perfect for the way we live today, the two-bedroom Danbury has a modern open plan kitchen/dining room with garden access and a spacious front-aspect living room that's ideal for entertaining. Upstairs there are two bedrooms - bedroom one has an en suite - a study and a family-sized bathroom. Appealing to families, first-time buyers and young professionals.



GROUND FLOOR



1ST FLOOR

Please note that elevation treatments and window/door positions may vary from plot to plot. Plot specific information will be confirmed on your reservation check list.

This information is for guidance only and does not form any part of any contract or constitute a warranty. Illustrations are of typical elevations and may vary. Floor plans are not drawn to scale and window positions may vary. Room dimensions are subject to a +/- 50mm (2") tolerance and are based on the maximum dimensions in each room. Please consult your sales advisor on site for specific elevations, room dimensions and external finishes. The EPC ratings are estimated and vary between home types, orientation and developments.

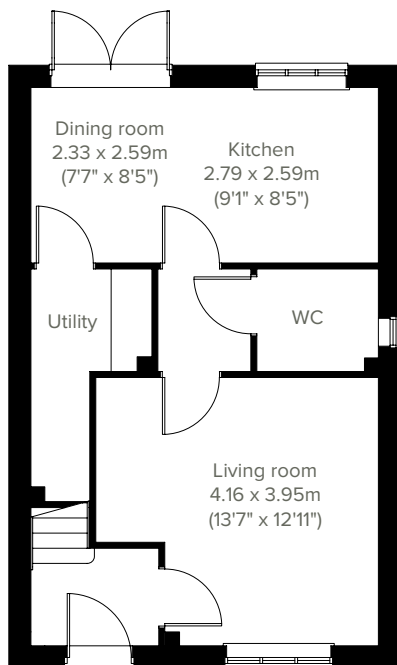


The Galloway

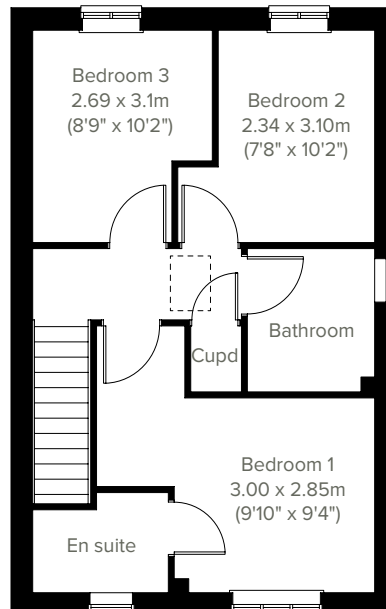
3 bedroom home



The popular Galloway is a three-bedroom family home with a bright and modern open plan kitchen/dining room with French doors leading into the garden. The downstairs WC, two handy storage cupboards and en suite to bedroom one mean it ticks all the boxes for practical family living.



GROUND FLOOR



1ST FLOOR

Please note that elevation treatments and window/door positions may vary from plot to plot. Plot specific information will be confirmed on your reservation check list.

This information is for guidance only and does not form any part of any contract or constitute a warranty. Illustrations are of typical elevations and may vary. Floor plans are not drawn to scale and window positions may vary. Room dimensions are subject to a +/- 50mm (2") tolerance and are based on the maximum dimensions in each room. Please consult your sales advisor on site for specific elevations, room dimensions and external finishes. The EPC ratings are estimated and vary between home types, orientation and developments.

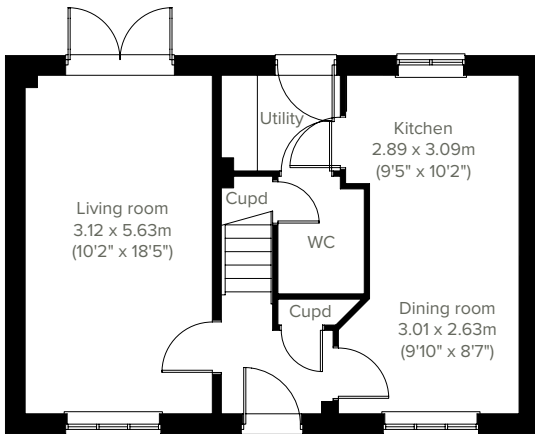


3 bedroom home

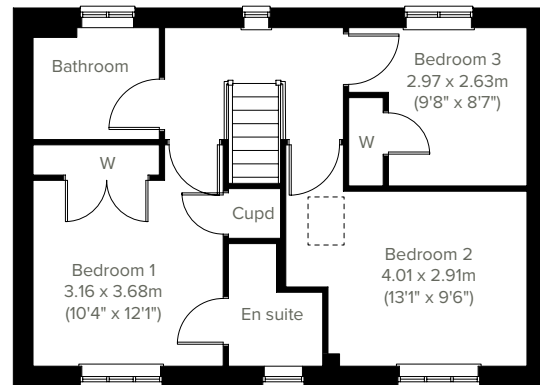
The Charnwood



Enjoy the best of modern living in this popular three-bedroom home which features a stylish open plan kitchen/dining room and utility room. The Charnwood has a bright dual-aspect living room with French doors leading into the garden, handy storage cupboards and downstairs WC. Upstairs there are three good-sized bedrooms - bedroom one with an en suite - and a good-sized family bathroom.



GROUND FLOOR



1ST FLOOR

Please note that elevation treatments and window/door positions may vary from plot to plot. Plot specific information will be confirmed on your reservation check list.

This information is for guidance only and does not form any part of any contract or constitute a warranty. Illustrations are of typical elevations and may vary. Floor plans are not drawn to scale and window positions may vary. Room dimensions are subject to a +/- 50mm (2") tolerance and are based on the maximum dimensions in each room. Please consult your sales advisor on site for specific elevations, room dimensions and external finishes. The EPC ratings are estimated and vary between home types, orientation and developments.

14

EPC: B

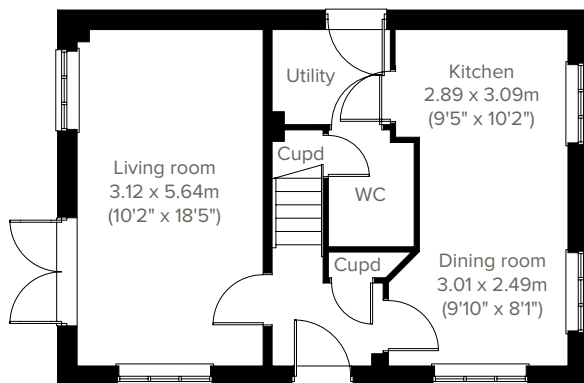


The Barnwood

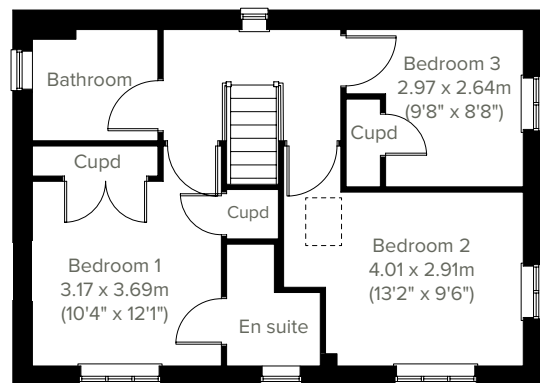
3 bedroom home



A thoughtfully-designed three-bedroom family home with much to offer, the Barnwood has a bright and modern open plan kitchen/dining room leading to a handy utility room. The spacious living room has French doors leading into the garden. The inner hallway, downstairs WC and cupboards take care of everyday storage. Plus there's an en suite to bedroom one and a family bathroom.



GROUND FLOOR



1ST FLOOR

Please note that elevation treatments and window/door positions may vary from plot to plot. Plot specific information will be confirmed on your reservation check list.

This information is for guidance only and does not form any part of any contract or constitute a warranty. Illustrations are of typical elevations and may vary. Floor plans are not drawn to scale and window positions may vary. Room dimensions are subject to a +/- 50mm (2") tolerance and are based on the maximum dimensions in each room. Please consult your sales advisor on site for specific elevations, room dimensions and external finishes. The EPC ratings are estimated and vary between home types, orientation and developments.

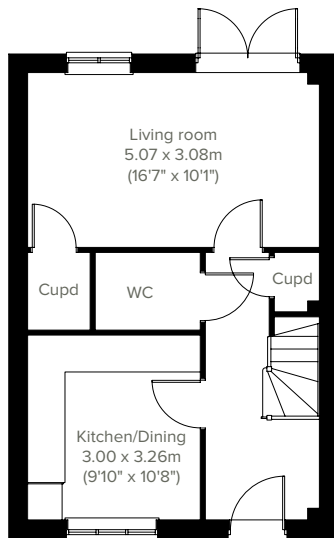


3 bedroom home

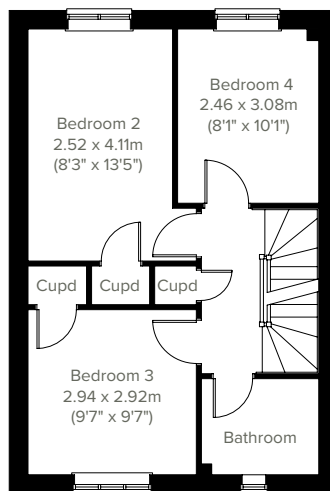
The Whinfell



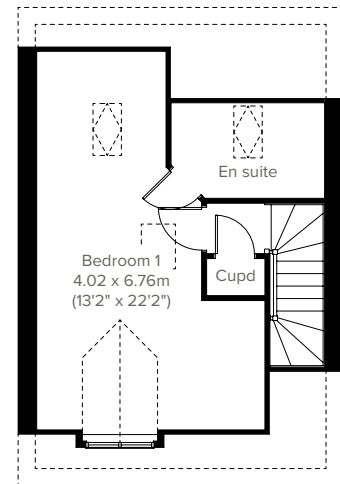
Perfect for the way we live today, the three-bedroom, 2.5-storey Whinfell has a modern kitchen/dining room and a spacious living room with French doors leading into the garden, making it a home that's ideal for entertaining. The first floor benefits from two nicely-proportioned bedrooms, a study and a family-sized bathroom. The second floor's bedroom one benefits from an en suite and further storage.



GROUND FLOOR



1ST FLOOR



2ND FLOOR

Please note that elevation treatments and window/door positions may vary from plot to plot. Plot specific information will be confirmed on your reservation check list.

This information is for guidance only and does not form any part of any contract or constitute a warranty. Illustrations are of typical elevations and may vary. Floor plans are not drawn to scale and window positions may vary. Room dimensions are subject to a +/- 50mm (2") tolerance and are based on the maximum dimensions in each room. Please consult your sales advisor on site for specific elevations, room dimensions and external finishes. The EPC ratings are estimated and vary between home types, orientation and developments.

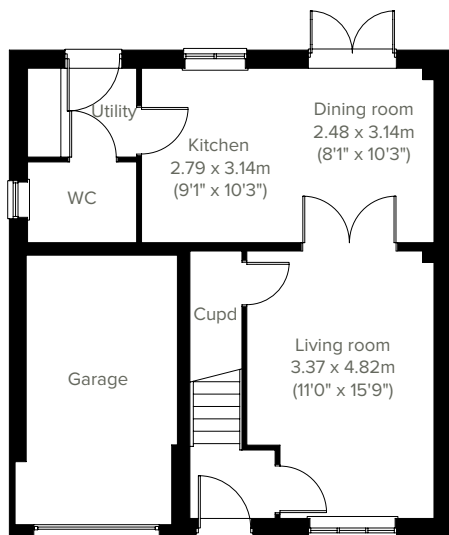


The Rivington

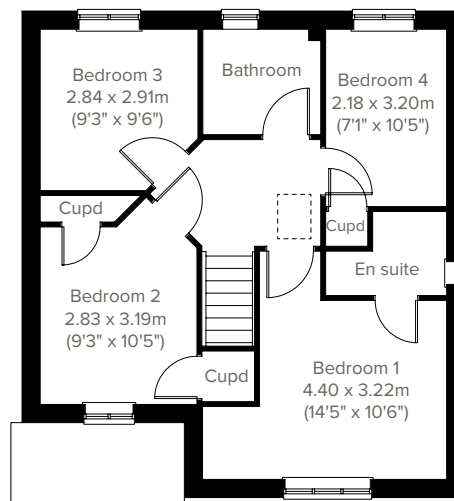
4 bedroom home



An attractive family home, the Rivington is designed for modern living. It's a four-bedroom detached home with an integral garage, a front-aspect living room and a spacious open plan kitchen/dining room with French doors leading out into the garden - ideal for family life and entertaining friends. Bedroom one has an en suite with the roomy landing leading on to three further bedrooms, storage cupboards and the main family bathroom.



GROUND FLOOR



1ST FLOOR

Please note that elevation treatments and window/door positions may vary from plot to plot. Plot specific information will be confirmed on your reservation check list.

This information is for guidance only and does not form any part of any contract or constitute a warranty. Illustrations are of typical elevations and may vary. Floor plans are not drawn to scale and window positions may vary. Room dimensions are subject to a +/- 50mm (2") tolerance and are based on the maximum dimensions in each room. Please consult your sales advisor on site for specific elevations, room dimensions and external finishes. The EPC ratings are estimated and vary between home types, orientation and developments.

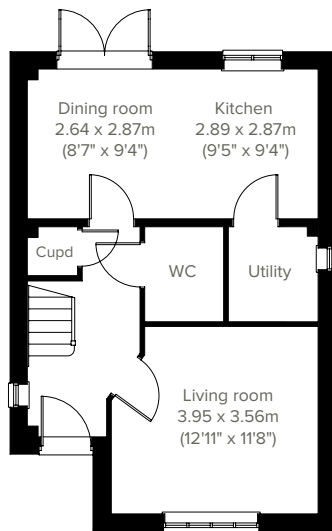


4 bedroom home

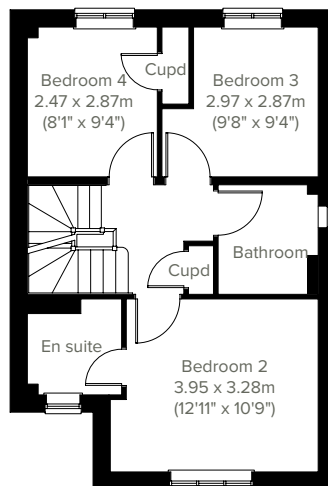
The Greenwood



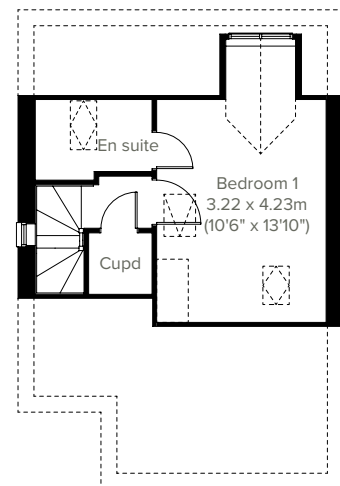
Enjoy the best of modern living in this popular four-bedroom home. The Greenwood's bright front-aspect living room, spacious kitchen/dining room, separate utility room, handy storage cupboard and downstairs WC complete the ground floor. The first floor consists of three bedrooms - bedroom two with an en suite - and a family bathroom. On the second floor, bedroom one has an en suite and further storage.



GROUND FLOOR



1ST FLOOR



2ND FLOOR

Please note that elevation treatments and window/door positions may vary from plot to plot. Plot specific information will be confirmed on your reservation check list.

This information is for guidance only and does not form any part of any contract or constitute a warranty. Illustrations are of typical elevations and may vary. Floor plans are not drawn to scale and window positions may vary. Room dimensions are subject to a +/- 50mm (2") tolerance and are based on the maximum dimensions in each room. Please consult your sales advisor on site for specific elevations, room dimensions and external finishes. The EPC ratings are estimated and vary between home types, orientation and developments.

18

EPC: B

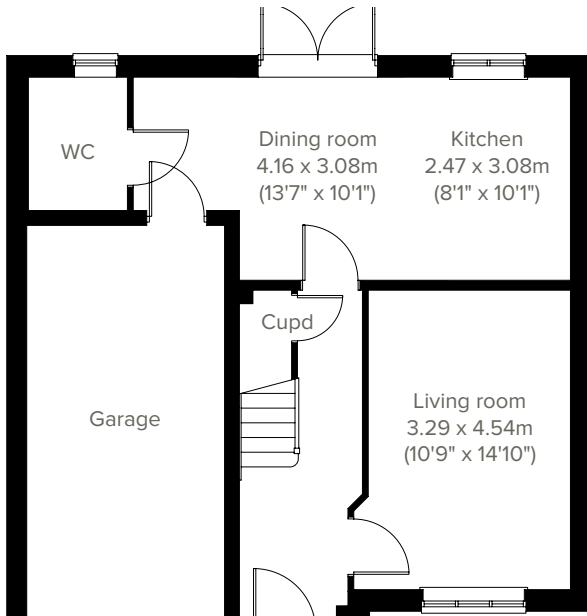


The Marston

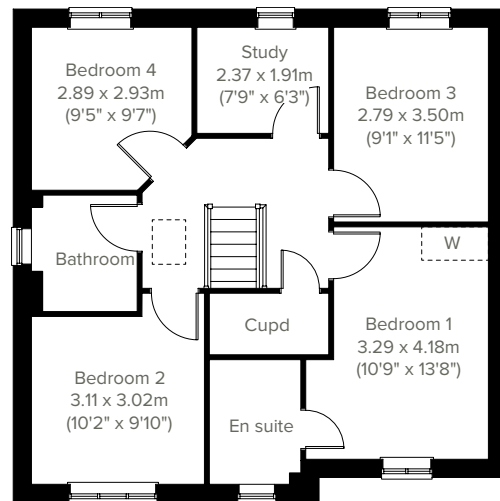
4 bedroom home



A popular family home, the Marston ticks all the boxes. The modern and stylish open plan kitchen/dining room is perfect for spending time as a family and entertaining. There's also a well-proportioned living room, downstairs WC and utility area. Upstairs there are four bedrooms - bedroom one has an en suite - a large family-sized bathroom, a study and further storage.



GROUND FLOOR



1ST FLOOR

Please note that elevation treatments and window/door positions may vary from plot to plot. Plot specific information will be confirmed on your reservation check list.

This information is for guidance only and does not form any part of any contract or constitute a warranty. Illustrations are of typical elevations and may vary. Floor plans are not drawn to scale and window positions may vary. Room dimensions are subject to a +/- 50mm (2") tolerance and are based on the maximum dimensions in each room. Please consult your sales advisor on site for specific elevations, room dimensions and external finishes. The EPC ratings are estimated and vary between home types, orientation and developments.

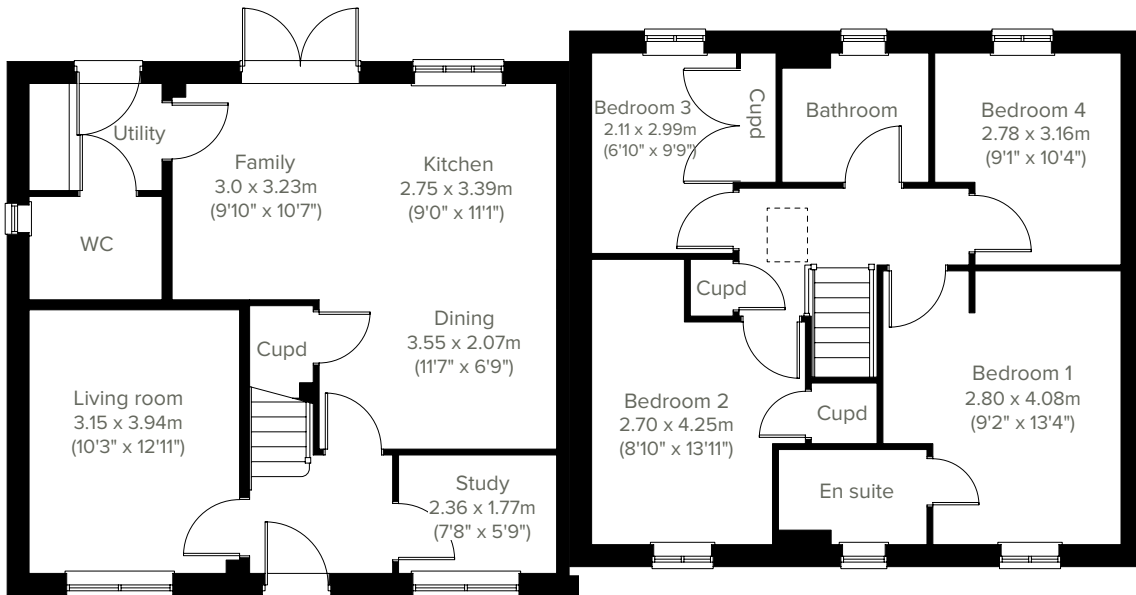


4 bedroom home

The Brampton



A beautifully-designed four-bedroom detached home, the Brampton has everything you need for modern living. Downstairs there's a front-aspect living room, a spacious kitchen/dining/family room with French doors leading into the rear garden, and a separate study. The first floor is home to a generous bedroom one with en suite plus plenty of storage cupboards and the family bathroom.



GROUND FLOOR

1ST FLOOR

Please note that elevation treatments and window/door positions may vary from plot to plot. Plot specific information will be confirmed on your reservation check list.

This information is for guidance only and does not form any part of any contract or constitute a warranty. Illustrations are of typical elevations and may vary. Floor plans are not drawn to scale and window positions may vary. Room dimensions are subject to a +/- 50mm (2") tolerance and are based on the maximum dimensions in each room. Please consult your sales advisor on site for specific elevations, room dimensions and external finishes. The EPC ratings are estimated and vary between home types, orientation and developments.

20

EPC: B

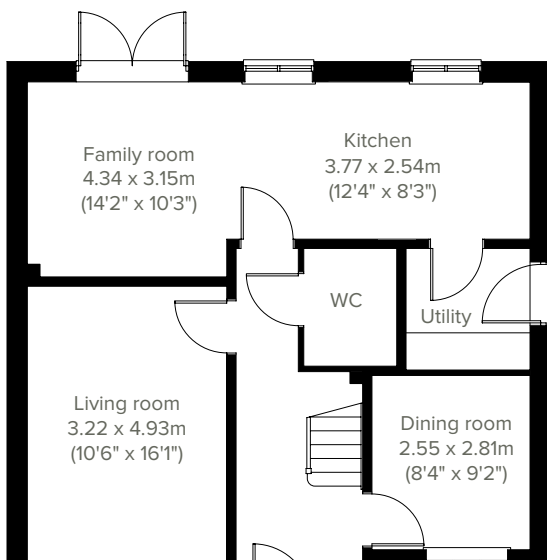


The Kielder

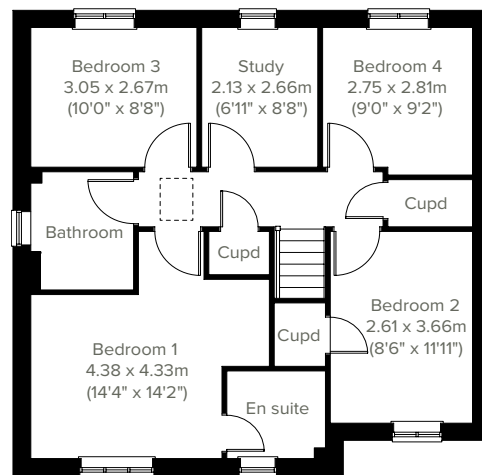
4 bedroom home



The Kielder is a superb detached home with a good-sized living room, and a bright open plan kitchen/ family room with double doors leading onto the garden and a separate dining room - perfect for family life and entertaining. It's practical too, with a utility, downstairs WC and two storage cupboards. The large bedroom one has an en suite with the spacious landing leading on to three further bedrooms, a study and the main family bathroom.



GROUND FLOOR



1ST FLOOR

Please note that elevation treatments and window/door positions may vary from plot to plot. Plot specific information will be confirmed on your reservation check list.

This information is for guidance only and does not form any part of any contract or constitute a warranty. Illustrations are of typical elevations and may vary. Floor plans are not drawn to scale and window positions may vary. Room dimensions are subject to a +/- 50mm (2") tolerance and are based on the maximum dimensions in each room. Please consult your sales advisor on site for specific elevations, room dimensions and external finishes. The EPC ratings are estimated and vary between home types, orientation and developments.

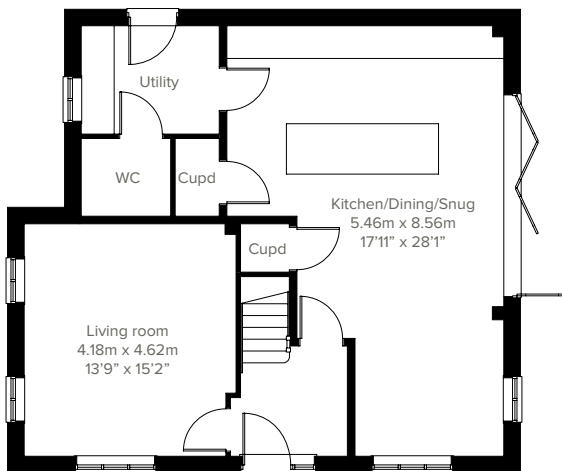


4 bedroom home

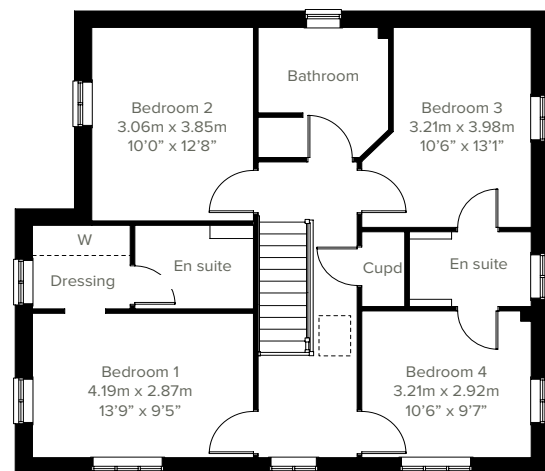
The Seacombe



A huge open-plan kitchen/dining room that incorporates a snug, an island, and bi-fold doors to the garden is the jewel in the crown of this four-bedroom detached family home. The Seacombe doesn't stop there. There's a separate living room, a utility room with outside access, three bathrooms, a dressing room to bedroom one, and a garage. This is a wonderful new home for all aspects of family life.



GROUND FLOOR



1ST FLOOR

Please note that elevation treatments and window/door positions may vary from plot to plot. Plot specific information will be confirmed on your reservation check list.

This information is for guidance only and does not form any part of any contract or constitute a warranty. Illustrations are of typical elevations and may vary. Floor plans are not drawn to scale and window positions may vary. Room dimensions are subject to a +/- 50mm (2") tolerance and are based on the maximum dimensions in each room. Please consult your sales advisor on site for specific elevations, room dimensions and external finishes. The EPC ratings are estimated and vary between home types, orientation and developments.

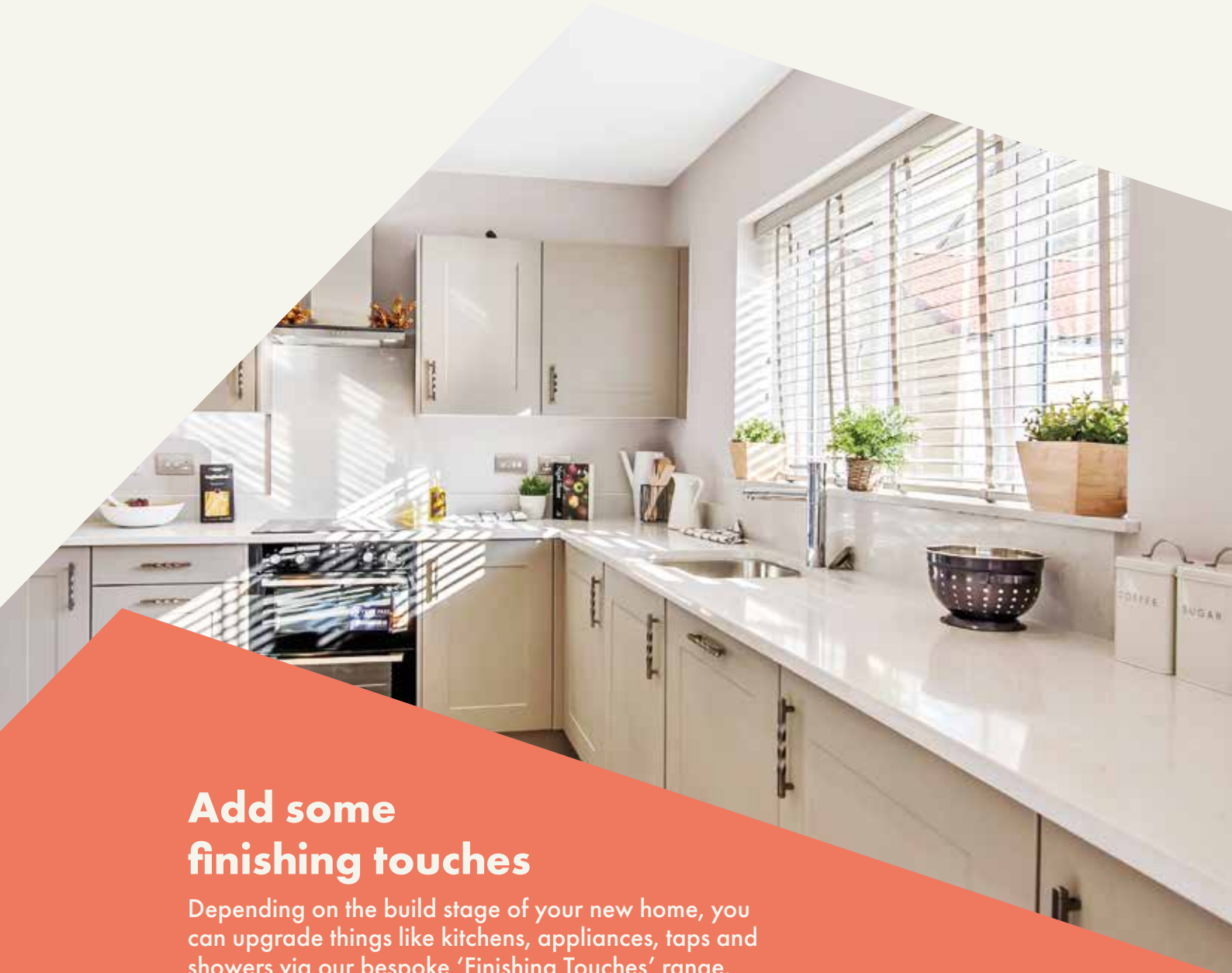




Jubilee Rise

Specifications

Our homes include these items as standard to ensure you have everything you need to be comfortable from the day you move in. Built for today's modern lifestyles with sustainability in mind.



Add some finishing touches

Depending on the build stage of your new home, you can upgrade things like kitchens, appliances, taps and showers via our bespoke 'Finishing Touches' range.



External

Walls

Traditional cavity walls.
Inner: timber frame or block.
Outer: Style suited to planned architecture.

Roof

Tile or slate-effect with PVCu rainwater goods.

Windows

Double glazed E-glass windows in PVCu frames.

Doors

GRP-skinned external doors with PVCu frames.
French doors to garden or balcony
(where applicable).

Electrics

Doorbell and external light to front.



Internal

Ceilings

Painted white.

Lighting

Pendant or batten fittings with low-energy bulbs.

Stairs

Staircase painted white.

Walls

Painted in white emulsion.

Doors

White pre-finished doors with white hinges.

Heating

Gas fired combi boiler with radiators in all main rooms, with thermostatically-controlled valves to bedrooms.

Insulation

Insulated loft and hatch to meet current building regulations.

Electrics

Individual circuit breakers to consumer unit and double electric sockets to all main rooms.

General

Media plate incorporating TV and telecommunication outlets to living room.



Kitchen

General

Fully-fitted kitchen with a choice of doors and laminate worktop with upstands to match (depending on build stage) with soft closure to all doors and drawers.

Plumbing

Plumbing for washing machine.

Appliances

Single electric stainless steel oven, gas hob in stainless steel and integrated cooker hood and splash-back.



Bathroom

Suites

White bathroom suites with chrome-finished fittings.

Extractor fan

Extractor fan to bathroom and en suite (where applicable).

Shower

Mira showers with chrome fittings to en suite. Where there is no en suite, Mira thermostatic shower with wall mounted shower head, complete with shower screen.

Tiling

Half height tiling to sanitary-ware walls in bathroom and en suite.

Splash-backs

1-course splash-back to WC basin /
3-course splash-back to bath / fully tiled shower.

General

En suite to bedroom(s) where applicable.



Security

Locks

Three-point locking to front and rear doors, locks to all windows (except escape windows).

Fire

Smoke detectors wired to the mains with battery back-up.



Garage & Gardens

Garage

Garage, car ports or parking space.

Garden

Front lawn turfed or landscaped (where applicable).

Fencing

1.8 metre fence to rear garden, plus gate.





Energy efficiency built in

Sustainability

Our homes are typically 30% more efficient than traditional UK housing, helping you to save money and reduce your impact on the environment.

We're proud that we already build our homes to high levels of energy efficiency, but there's still a way to go. Our in-house sustainability team is dedicated to our mission to have net zero carbon homes in use by 2030, and for our own operations to be net zero carbon by 2040.

To achieve this, we're working to science-based carbon reduction targets in line with the Paris Agreement's 1.5°C warming pledge, investing in low-carbon solutions and technology that will further reduce the carbon footprints of our homes and out impact on the planet.

Energy efficiency built in:

- ✓ **EPC rating – B**
Our typical B rating makes our homes much more efficient than traditional D-rated homes.
- ✓ **Up to 400mm roof space insulation**
Warmer in winter, cooler in summer, reducing energy bills.
- ✓ **Argon gas filled double glazing**
Greater insulation and reduced heat loss.
- ✓ **Energy efficient lighting**
We use energy-saving LED lightbulbs in all our homes.
- ✓ **A-rated appliances**
Many of our kitchen appliances have a highly efficient A rating.
- ✓ **A-rated boilers**
Our condenser boilers far outperform non-condensing ones.
- ✓ **Local links**
We're located close to amenities and public transport to help reduce your travel footprint.
- ✓ **Ultra-fast broadband**
FibreNest fibre-to-the-home connectivity helps you live and work at home more flexibly.
- ✓ **Lower-carbon bricks**
Our concrete bricks typically use 28% less carbon in manufacture than clay, giving total lifetime carbon savings of 2.4 tonnes of CO₂ per house built.



FibreNest™



Your home, better connected
for a brighter future



Ultrafast 500Mb broadband is available on this development.

FibreNest provides you with high-speed, totally unlimited
full-fibre broadband to your home, at great prices.



Choose the best package for you

We know every household is different, that's why we've put together six amazing packages to suit everyone's needs. From surfing the net on the sofa to binge-watching the latest box set, streaming music with friends to ruling the galaxy in the latest must-have game - we've got the service for you.



Scan me!
For packages & pricing.



0333 234 2220



support@fibrenewest.com

Get connected today!

To sign up you will need your Unique Customer Reference.
Please ask your sales advisor for this:

C:

D:

P:



Your home, your way

Finishing Touches to make it yours

Our goal is to make your house feel like your home before you've even collected the keys.

Key to achieving this is giving you the creative freedom to add your own style and personality to every room through our fabulous Finishing Touches collection.

Featuring the very latest designs from a host of leading brands, Finishing Touches lets you personalise your home inside and out. And rest assured, every upgrade and item available has been carefully chosen to complement the style

and finish of your new home. Of course, the real beauty is that all these extras will be ready for the day you move in.

Thanks to our impressive buying power we can offer almost any upgrade you can imagine at a highly competitive price. It can all be arranged from the comfort and convenience of one of our marketing suites, in a personal design appointment.

You can choose:



Kitchens



Appliances



Bathrooms



Flooring



Wardrobes



Fixtures & fittings

"One of the most exciting things about buying a brand new home is putting your own stamp on a blank canvas."



Share & win!

Share your love for your new Persimmon home and you could win a £100 Next voucher. For inspiration, check out past winners' homes on our Instagram page @persimmon_homes

#lovemypersimmonhome

The earlier you reserve, the greater the choice

We'll always try and accommodate the Finishing Touches you want, but they are build-stage dependent, so the earlier you reserve the better.

persimmonhomes.com/finishingtouches

Finishing Touches are subject to availability and stage of construction. Prices for your specific home type will be in our price list. For a full list of Finishing Touches available for your home, please contact the sales advisor on site.



6 reasons why it pays to buy new

Did you know?

Most of the benefits of buying new are obvious, but some are not. Here's a quick summary of the key reasons why it's such a smart move:

1.

No chain

Few things are more annoying in the home buying process than a time-consuming chain you can't control. Buying new limits the chance of getting involved in one.

2.

Energy efficient

Our homes include cost-effective combi boilers, first-rate loft insulation and draught-free double glazed windows to meet stringent energy-efficient standards, keeping your energy bills as low as possible.

3.

Brand new

Absolutely everything in your new home is brand new. You get all the latest designs and tech, complete with manufacturers' warranties. Win-win.

4.

More ways to buy

We offer a range of schemes to help get you on the property ladder, including Home Change and Part Exchange.

5.

10 year warranty

All our new homes come with a ten-year, insurance-backed warranty, as well as our own two-year Persimmon warranty. In the unlikely event you ever need to claim, our Customer Care Team are there to help you.

6.

Safe & secure

All our homes are built from fire-retardant materials and come with fitted smoke alarms and fire escape windows. They're also far more secure than older buildings thanks to the security locks and lighting we use.

[persimmonhomes.com](https://www.persimmonhomes.com)

