



# Persimmon

Together, we make your home



## Jubilee Rise

Shepshed • Loughborough

# Together, we make your home

When it comes to designing a new development, we apply the same philosophy every time – make it unique, make it personal. That's because we understand your new home is more than simply bricks and mortar. It's a private place of sanctuary where we hope you'll laugh, entertain and escape for many years to come.

**"We have over 50 years of building expertise, find out more about us on page 4"**

#### **5 stars!**

We're proud of our 5 star builder status awarded by the national Home Builders Federation (HBF). It's a reflection of our commitment to delivering excellence always and putting our customers at the heart of all we do.



Jubilee Rise

## Find out more

About Persimmon Homes	4
Your journey with us and schemes to help	6
Living at Jubilee Rise	8
Our homes	10
Specifications	30
Sustainability	32
Personalise with Finishing Touches	34



Who we are

## A little bit about us

You're about to make one of the most exciting investments of your life! A beautiful place to call home for years to come. Here are some reasons to invest in a Persimmon home...

### Over 50 years of expertise

We've been building homes and communities since the early seventies, and just as fashions have moved on, so too has construction. Over half a century we've perfected processes, fine-tuned materials and honed skills to make us one of today's most modern and progressive home builders.

### Sustainability mission

We're committed to reducing our impact on the planet and building for a better tomorrow, with a dedicated in-house team focused on this. [Read more on page 32](#)

## Persimmon plc in numbers

It's not all about numbers we know, but to give you sense of scale here are a few:

**10,664**

homes  
delivered in  
2024

**200+**

locations  
across  
the UK

**4,731**

direct employees  
make it all  
happen

**484**

acres of  
public space  
created

**£2.2bn**

invested in  
local communities  
over the last  
5 years



**“Building sustainable homes  
and community hubs”**

## Save money on your energy bills

The increased thermal retention from our insulation and double glazing, along with reduced water use thanks to efficient appliances, mean you'll automatically save money on your energy and water bills – and with the rising cost of living, this can make a real difference.



Take a look at the recently published HBF Watt a Save report to find out how much you could save.

## The Persimmon Pledge

The Persimmon Pledge is our commitment to making sure you receive exceptional customer service and relevant communications before, during and after you've moved in.



**Find out more about the  
Persimmon Pledge.**

## Accessible homes

It's crucial that your new home works perfectly for you and your needs. We build in line with Approved Document M accessibility requirements.



**Scan the QR code to find out what each rating means.**



## Happy hour

We run Customer Construction Clinics from our on-site sales offices each Monday from 5-6pm. Pop in to see the team both during and after you've moved in to your new home.



## 10-year warranty

When you buy a Persimmon home it comes complete with a 'peace of mind' 10-year insurance-backed warranty and our own two-year Persimmon warranty.



## Help when you need it

You'll have a dedicated customer care helpline, plus cover for emergencies like complete loss of electricity, gas, water or drainage.



## Finishing Touches

We know you'll want to make your home your own, so we created 'Finishing Touches', our home personalisation service. **Read more on page 34**



With you all the way

# Your journey with us

From finding your perfect new home to moving in,  
we're here to help every step of the way.

1. .....→ 2. .....→ 3. ....

## Reservation

So you've seen a home you love? Speak to one of our friendly sales advisors who will help you secure your dream home.

## Solicitor

You'll need to instruct a solicitor or conveyancer at the point of reservation. Your sales advisor can recommend a local independent company.

## Mortgage application

Most people will need to apply for a mortgage. We can recommend independent financial advisors to give you the best impartial advice.

4. .....→ 5. .....→ 6. ....

## Personalise!

The bit you've been waiting for! Making the final choices for your new home. Depending on build stage you can also choose from a range of Finishing Touches.

## Exchange contracts

One step closer to moving in – this is where we exchange contracts and your solicitor will transfer your deposit.

## Quality assurance

Your home will be thoroughly inspected by site teams and will also have an Independent Quality Inspection to make sure it's ready for you to move into.

7. .....→ 8. .....→ 9. ....

## Home demo

Another exciting milestone! Here's where you get to see your new home before completion. You'll be shown how everything works and any questions can be answered.

## Handover

The moment you've been waiting for! The paperwork has been completed, the money transferred and now it's time to move in and start unpacking...

## After-care

Our site and customer care teams will support you every step of the way. You'll receive a dedicated customer care line number to deal with any issues.

[persimmonhomes.com](https://www.persimmonhomes.com)



## Need help?

One of the best things about buying a new-build home is the amazing offers and schemes you could benefit from. T&Cs apply.



**PART  
EXCHANGE**

**Part Exchange**  
Need to sell your home? We could be your buyer. Save money and time and stay in your home until your new one completes.




**HOME  
CHANGE**

**Home Change**  
Sell your current home with our support. We'll take care of estate agent fees and offer expert advice to help get you moving.



**EARLY  
BIRD**

**Early Bird**  
If you've found a plot that's perfect for you, the Early Bird Scheme could be just what you need to secure your dream home.

- 
- A modern kitchen with grey cabinetry, a white countertop, and a built-in oven. On the counter, there is a wooden cutting board, a toaster, a container with utensils, a potted plant, and some groceries. A dark apron hangs on the wall to the left.
- Choice of 2, 3, 4-bedroom homes
  - Just over 6 miles from Loughborough train station
  - Close to Loughborough, Leicester, Nottingham and Derby
  - Good range of local amenities



**Scan me!**

For availability and pricing  
on our beautiful new homes  
at Jubilee Rise.



Shepshed • Loughborough

# Jubilee Rise

Set in the heart of the Leicestershire countryside, Jubilee Rise offers beautifully designed two, three and four-bedroom new homes for sale in Shepshed.

This vibrant development features generous green spaces and a fantastic range of on-site activities for families, including a basketball court, large play park, woodland area, teqball and tennis courts. The friendly local community is supported by a choice of sports and youth clubs, including cricket teams and activity groups that make it easy for families to get involved and feel at home.

Jubilee Rise is just 5 minutes from Shepshed town centre, where you can find shops, cafes, restaurants and an Asda. For more variety, Loughborough and Ashby de la Zouch are only 15 minutes away by car.

## Handy links

Shepshed offers excellent transport links, with nearby road access to the M1, A6 and A512. Leicester can be reached in just half an hour, while Birmingham is a 44-minute drive away. Loughborough train station is also within easy reach, making it simple to travel for work or leisure. For travel abroad, East Midlands Airport is just 12 minutes away by car.

This fantastic development also includes our Eco Range homes, with solar panels, EV charging, enhanced insulation and more, helping you save on energy and futureproof your home. As well as excellent local schools and road links to Loughborough, Leicester and Derby, it's a smart, sustainable choice.

## EXPLORE

Start exploring...

Loughborough  
**5.1 miles**

Loughborough train station  
**6.1 miles**

Leicester  
**13.8 miles**

Nottingham  
**18.7 miles**



## Jubilee Rise

### Our homes

#### 2 bedroom

 The Addlebrough

#### 3 bedroom

 The Galloway

 The Braunton

 The Saunton

 The Barnwood

 The Charnwood

 The Barndale

 The Charndale

#### 4 bedroom

 The Rivington

 The Whinfell

 The Marston

 The Greenwood

 The Kennet

 The Brampton

 The Carradale

 The Kielder

 The Hendon

 The Seacombe



Affordable Housing



Discount of Market Value





This site layout is intended for illustrative purposes only, and may be subject to change, for example, in response to market demand, ground conditions or technical and planning reasons. Trees, planting and public open space shown are indicative, actual numbers and positions may vary. This site plan does not form any part of a warranty or contract. Further information is available from a site sales advisor. The location of the affordable housing on this plan is indicative only and both the location and number of affordable housing plots may be subject to change.

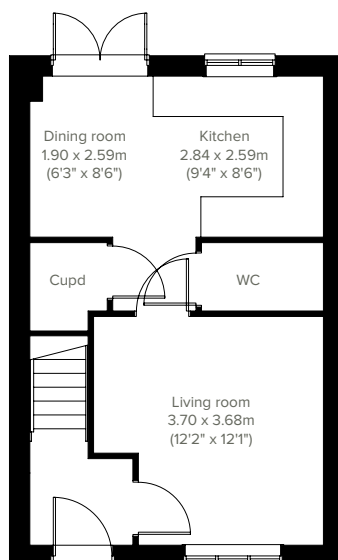


2 bedroom home

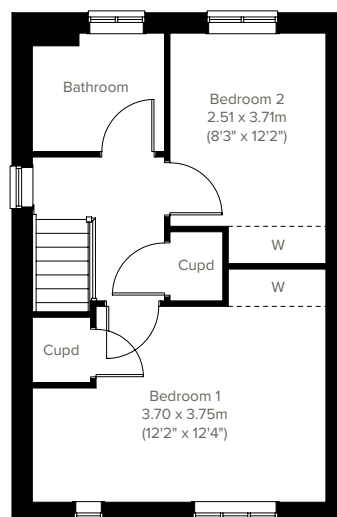
# The Addlebrough



The Addlebrough features a bright open plan kitchen/dining room with French doors leading into the garden and a spacious front-aspect living room. Upstairs there are two nicely-proportioned bedrooms and a family-sized bathroom. With plenty of storage cupboards too, this house is perfect for first-time buyers and young professionals.



**GROUND FLOOR**



**1ST FLOOR**

Please note that elevation treatments and window/door positions may vary from plot to plot. Plot specific information will be confirmed on your reservation check list.

This information is for guidance only and does not form any part of any contract or constitute a warranty. Illustrations are of typical elevations and may vary. Floor plans are not drawn to scale and window positions may vary. Room dimensions are subject to a +/- 50mm (2") tolerance and are based on the maximum dimensions in each room. Please consult your sales advisor on site for specific elevations, room dimensions and external finishes. The PEA ratings are estimated and vary between home types, orientation and developments.

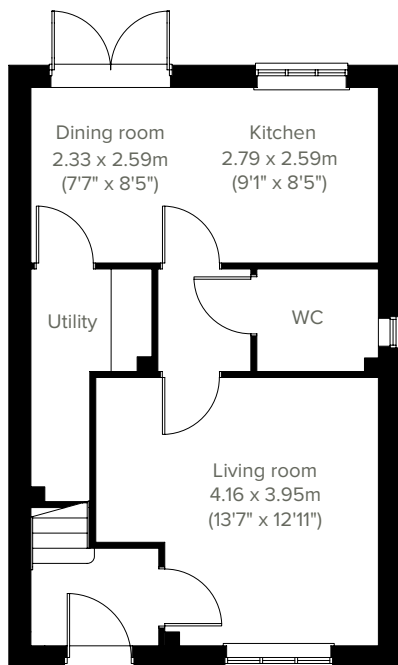


# The Galloway

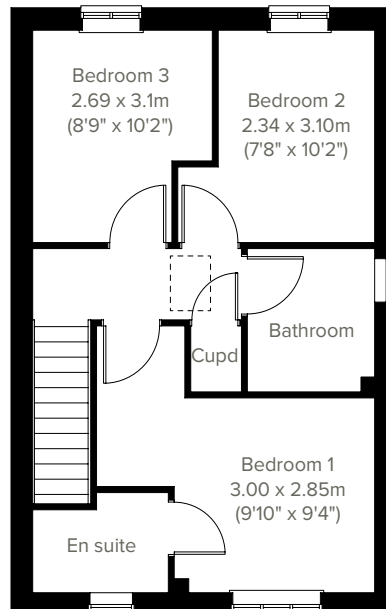
3 bedroom home



The popular Galloway is a three-bedroom family home with a bright and modern open plan kitchen/dining room with French doors leading into the garden. The downstairs WC, two handy storage cupboards and en suite to bedroom one mean it ticks all the boxes for practical family living.



**GROUND FLOOR**



**1ST FLOOR**

Please note that elevation treatments and window/door positions may vary from plot to plot. Plot specific information will be confirmed on your reservation check list.

This information is for guidance only and does not form any part of any contract or constitute a warranty. Illustrations are of typical elevations and may vary. Floor plans are not drawn to scale and window positions may vary. Room dimensions are subject to a +/- 50mm (2") tolerance and are based on the maximum dimensions in each room. Please consult your sales advisor on site for specific elevations, room dimensions and external finishes. The PEA ratings are estimated and vary between home types, orientation and developments.

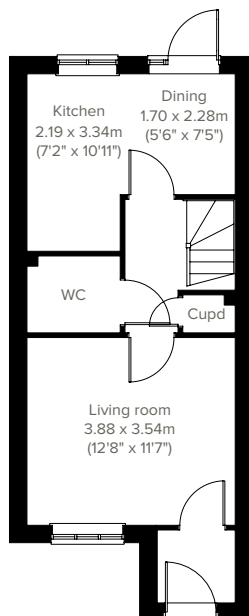


3 bedroom home

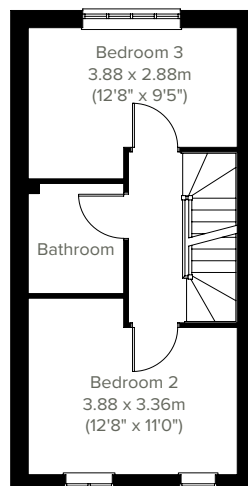
# The Braunton



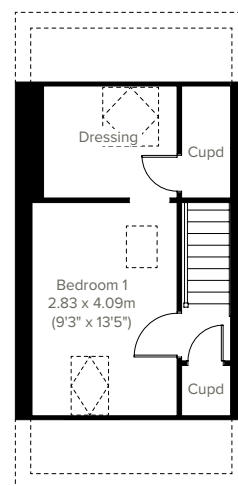
A superb family home, the Braunton features a bright open plan kitchen/dining room with access to the garden, and a spacious front-aspect living room. The WC and storage cupboard ensure it's practical as well as stylish. Upstairs you'll find two bedrooms and a family-sized bathroom and on the top floor bedroom one benefits from a dressing area and two handy storage cupboards.



**GROUND FLOOR**



**1ST FLOOR**



**2ND FLOOR**

Please note that elevation treatments and window/door positions may vary from plot to plot. Plot specific information will be confirmed on your reservation check list.

This information is for guidance only and does not form any part of any contract or constitute a warranty. Illustrations are of typical elevations and may vary. Floor plans are not drawn to scale and window positions may vary. Room dimensions are subject to a +/- 50mm (2") tolerance and are based on the maximum dimensions in each room. Please consult your sales advisor on site for specific elevations, room dimensions and external finishes. The PEA ratings are estimated and vary between home types, orientation and developments. Accessible and adaptable dwelling requirements are based upon the internal arrangements only. External requirements may vary between local authority and developments.

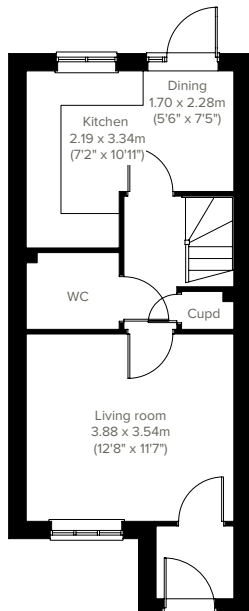


# The Saunton

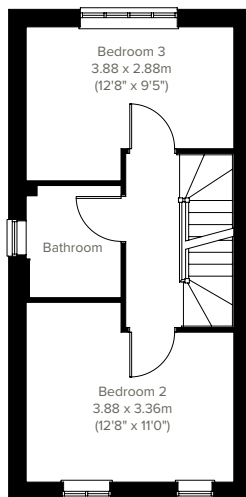
3 bedroom home



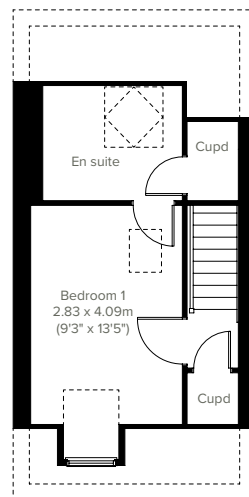
Set across three floors, the Saunton is designed to grow with you. The open plan kitchen/dining room is perfect for busy households, and the welcoming living room gives you space to unwind. Practical touches include an enclosed porch, ground floor WC, and three storage cupboards. The first floor is home to two well-proportioned bedrooms and the family bathroom, while the second floor is dedicated to a spacious bedroom one with an en suite.



**GROUND FLOOR**



**1ST FLOOR**



**2ND FLOOR**

Please note that elevation treatments and window/door positions may vary from plot to plot. Plot specific information will be confirmed on your reservation check list.

This information is for guidance only and does not form any part of any contract or constitute a warranty. Illustrations are of typical elevations and may vary. Floor plans are not drawn to scale and window positions may vary. Room dimensions are subject to a +/- 50mm (2") tolerance and are based on the maximum dimensions in each room. Please consult your sales advisor on site for specific elevations, room dimensions and external finishes. The PEA ratings are estimated and vary between home types, orientation and developments. Accessible and adaptable dwelling requirements are based upon the internal arrangements only. External requirements may vary between local authority and developments.

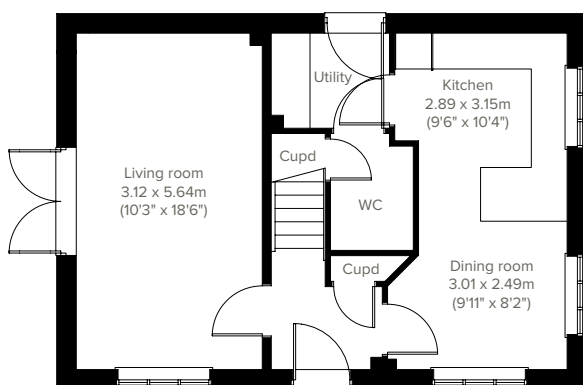


3 bedroom home

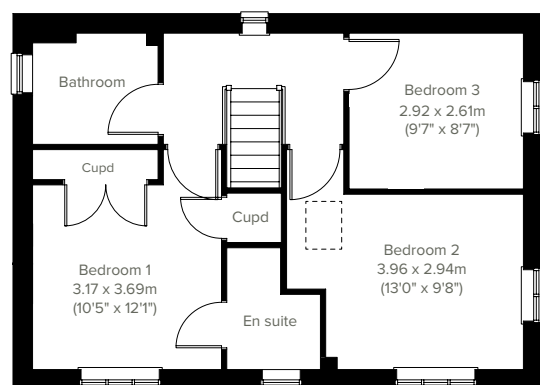
# The Barnwood



A thoughtfully-designed three-bedroom family home with much to offer, the Barnwood has a bright and modern open plan kitchen/dining room leading to a handy utility room. The spacious living room has French doors leading into the garden. The inner hallway, downstairs WC and cupboards take care of everyday storage. Plus there's an en suite to bedroom one and a family bathroom.



**GROUND FLOOR**



**1ST FLOOR**

Please note that elevation treatments and window/door positions may vary from plot to plot. Plot specific information will be confirmed on your reservation check list.

This information is for guidance only and does not form any part of any contract or constitute a warranty. Illustrations are of typical elevations and may vary. Floor plans are not drawn to scale and window positions may vary. Room dimensions are subject to a +/- 50mm (2") tolerance and are based on the maximum dimensions in each room. Please consult your sales advisor on site for specific elevations, room dimensions and external finishes. The PEA ratings are estimated and vary between home types, orientation and developments. Accessible and adaptable dwelling requirements are based upon the internal arrangements only. External requirements may vary between local authority and developments.

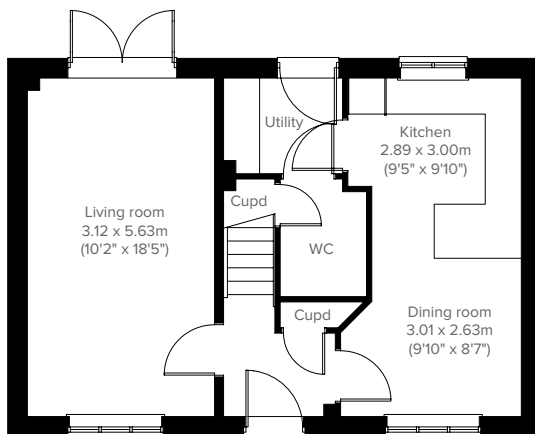


# The Charnwood

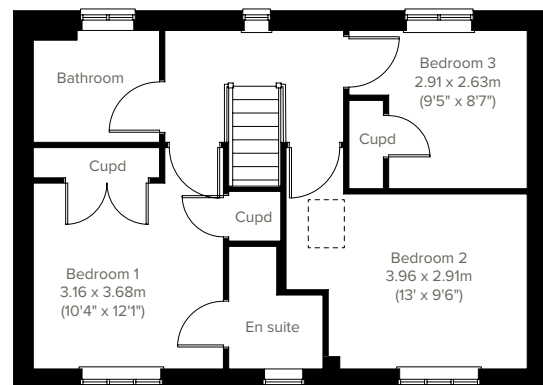
3 bedroom home



Enjoy the best of modern living in this popular three-bedroom home which features a stylish open plan kitchen/dining room and utility room. The Charnwood features a bright dual-aspect living room with French doors leading into the garden, handy storage cupboards and downstairs WC. Upstairs there are three good-sized bedrooms - bedroom one with an en suite, and a good-sized family bathroom.



**GROUND FLOOR**



**1ST FLOOR**

Please note that elevation treatments and window/door positions may vary from plot to plot. Plot specific information will be confirmed on your reservation check list.

This information is for guidance only and does not form any part of any contract or constitute a warranty. Illustrations are of typical elevations and may vary. Floor plans are not drawn to scale and window positions may vary. Room dimensions are subject to a +/- 50mm (2") tolerance and are based on the maximum dimensions in each room. Please consult your sales advisor on site for specific elevations, room dimensions and external finishes. The PEA ratings are estimated and vary between home types, orientation and developments. Accessible and adaptable dwelling requirements are based upon the internal arrangements only. External requirements may vary between local authority and developments.

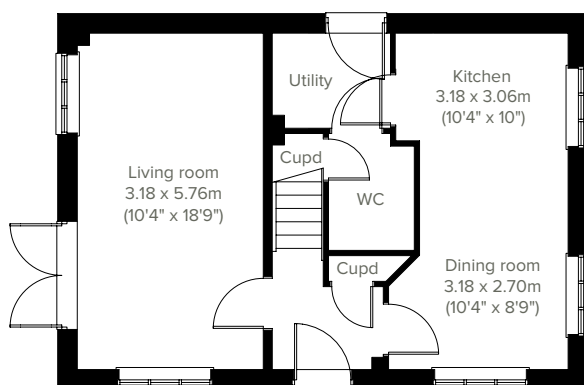


3 bedroom home

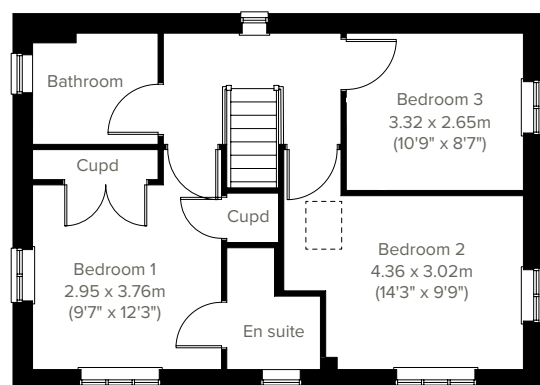
# The Barndale



A thoughtfully-designed three-bedroom family home with much to offer, the Barndale has a bright and modern open plan kitchen/dining room leading to a handy utility room with outside access. The spacious living room has French doors leading into the garden. The inner hallway, downstairs WC and cupboards take care of everyday storage. Plus there's an en suite to bedroom one and a family bathroom.



**GROUND FLOOR**



**1ST FLOOR**

Please note that elevation treatments and window/door positions may vary from plot to plot. Plot specific information will be confirmed on your reservation check list.

This information is for guidance only and does not form any part of any contract or constitute a warranty. Illustrations are of typical elevations and may vary. Floor plans are not drawn to scale and window positions may vary. Room dimensions are subject to a +/- 50mm (2") tolerance and are based on the maximum dimensions in each room. Please consult your sales advisor on site for specific elevations, room dimensions and external finishes. The PEA ratings are estimated and vary between home types, orientation and developments. Accessible and adaptable dwelling requirements are based upon the internal arrangements only. External requirements may vary between local authority and developments.

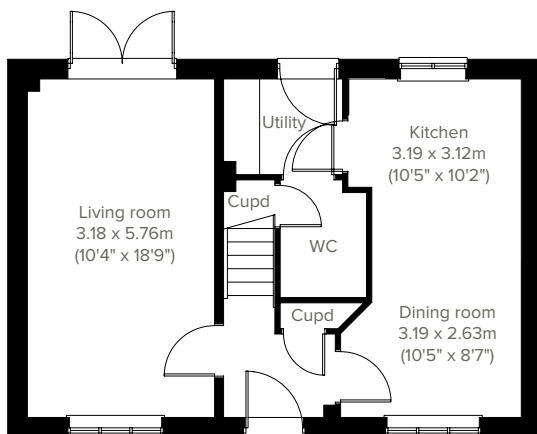


# The Charndale

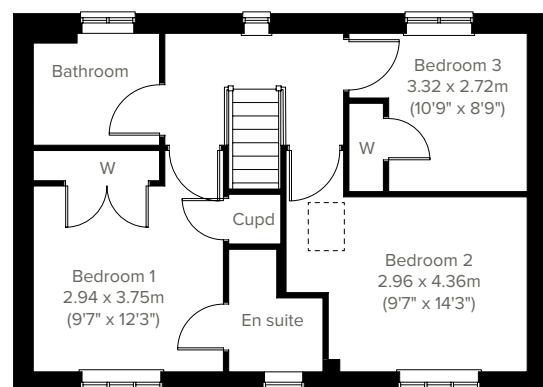
3 bedroom home



Enjoy the best of modern living in this popular three-bedroom home which features a stylish open plan kitchen/dining room and utility room with outside access. The Charndale features a bright dual-aspect living room with French doors leading into the garden, handy storage cupboards and downstairs WC. Upstairs there are three good-sized bedrooms - bedroom one with an en suite - and a good-sized family bathroom.



**GROUND FLOOR**



**1ST FLOOR**

Please note that elevation treatments and window/door positions may vary from plot to plot. Plot specific information will be confirmed on your reservation check list.

This information is for guidance only and does not form any part of any contract or constitute a warranty. Illustrations are of typical elevations and may vary. Floor plans are not drawn to scale and window positions may vary. Room dimensions are subject to a +/- 50mm (2") tolerance and are based on the maximum dimensions in each room. Please consult your sales advisor on site for specific elevations, room dimensions and external finishes. The PEA ratings are estimated and vary between home types, orientation and developments. Accessible and adaptable dwelling requirements are based upon the internal arrangements only. External requirements may vary between local authority and developments.

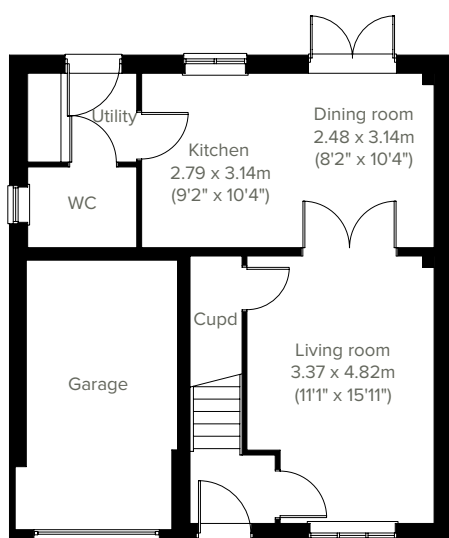


4 bedroom home

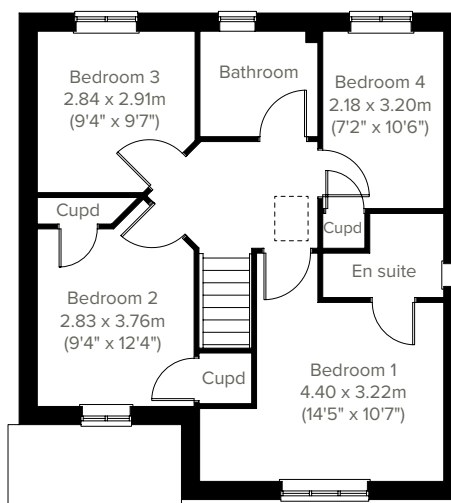
# The Rivington



An attractive family home, the Rivington is designed for modern living. It's a four-bedroom detached home with an integral garage, a front-aspect living room and a spacious open plan kitchen/dining room with French doors leading out into the garden - ideal for family life and entertaining friends. Bedroom one has an en suite with the roomy landing leading on to three further bedrooms, storage cupboards and the main family bathroom.



**GROUND FLOOR**



**1ST FLOOR**

Please note that elevation treatments and window/door positions may vary from plot to plot. Plot specific information will be confirmed on your reservation check list.

This information is for guidance only and does not form any part of any contract or constitute a warranty. Illustrations are of typical elevations and may vary. Floor plans are not drawn to scale and window positions may vary. Room dimensions are subject to a +/- 50mm (2") tolerance and are based on the maximum dimensions in each room. Please consult your sales advisor on site for specific elevations, room dimensions and external finishes. The PEA ratings are estimated and vary between home types, orientation and developments. Accessible and adaptable dwelling requirements are based upon the internal arrangements only. External requirements may vary between local authority and developments.

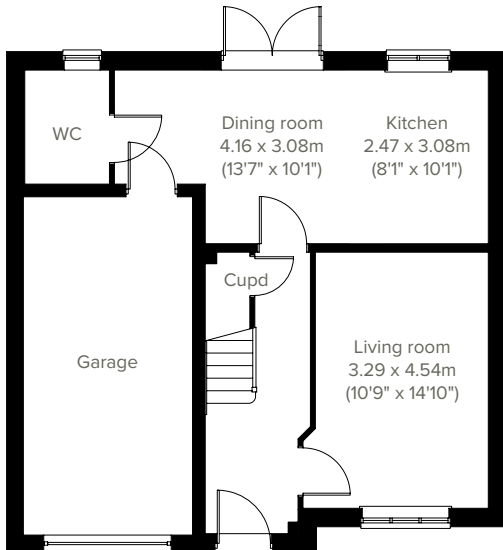


# The Marston

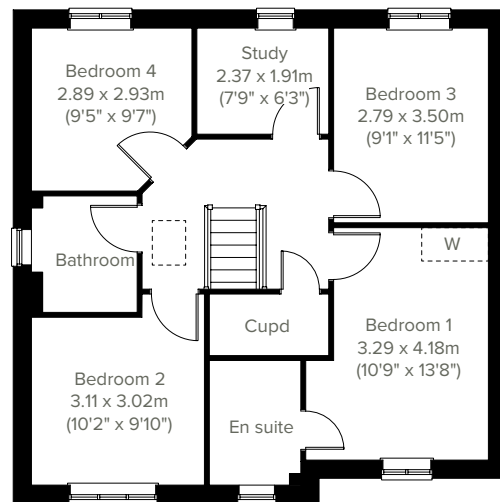
4 bedroom home



A popular family home, the Marston ticks all the boxes. The modern and stylish open plan kitchen/ dining room is perfect for spending time as a family and entertaining. There's also a well-proportioned living room and downstairs WC. Upstairs there are four bedrooms - bedroom one has an en suite - a large family-sized bathroom, a study and further storage.



**GROUND FLOOR**



**1ST FLOOR**

Please note that elevation treatments and window/door positions may vary from plot to plot. Plot specific information will be confirmed on your reservation check list.

This information is for guidance only and does not form any part of any contract or constitute a warranty. Illustrations are of typical elevations and may vary. Floor plans are not drawn to scale and window positions may vary. Room dimensions are subject to a +/- 50mm (2") tolerance and are based on the maximum dimensions in each room. Please consult your sales advisor on site for specific elevations, room dimensions and external finishes. The EPC ratings are estimated and vary between home types, orientation and developments. Accessible and adaptable dwelling requirements are based upon the internal arrangements only. External requirements may vary between local authority and developments.

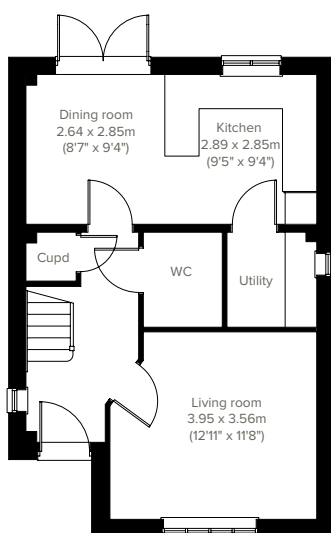


4 bedroom home

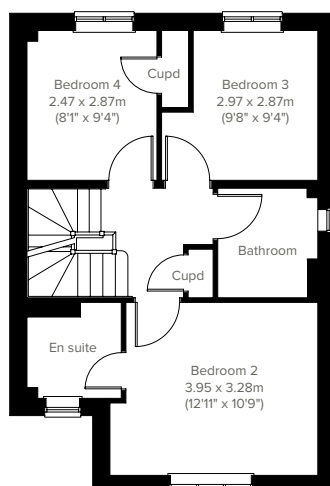
# The Greenwood



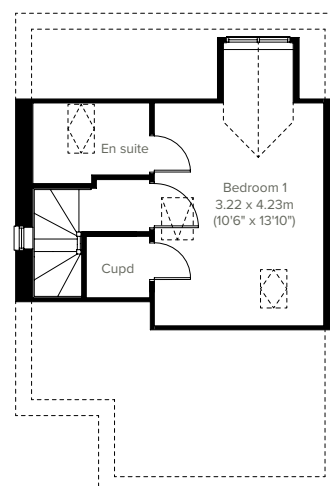
Enjoy the best of modern living in this popular four-bedroom home. The Greenwood's bright front-aspect living room, spacious kitchen/dining room, separate utility room, handy storage cupboard and downstairs WC complete the ground floor. The first floor consists of three bedrooms - bedroom two with an en suite and a family bathroom. On the second floor, bedroom one has an en suite and further storage.



**GROUND FLOOR**



**1ST FLOOR**



**2ND FLOOR**

Please note that elevation treatments and window/door positions may vary from plot to plot. Plot specific information will be confirmed on your reservation check list.

This information is for guidance only and does not form any part of any contract or constitute a warranty. Illustrations are of typical elevations and may vary. Floor plans are not drawn to scale and window positions may vary. Room dimensions are subject to a +/- 50mm (2") tolerance and are based on the maximum dimensions in each room. Please consult your sales advisor on site for specific elevations, room dimensions and external finishes. The PEA ratings are estimated and vary between home types, orientation and developments. Accessible and adaptable dwelling requirements are based upon the internal arrangements only. External requirements may vary between local authority and developments.

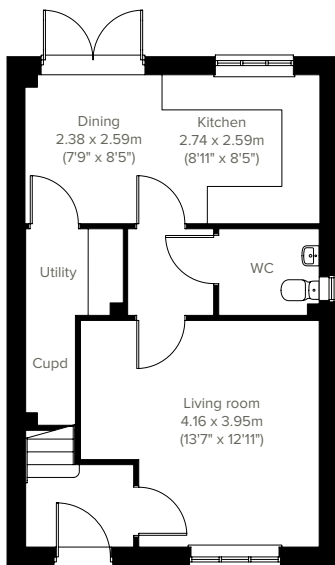


# The Kennet

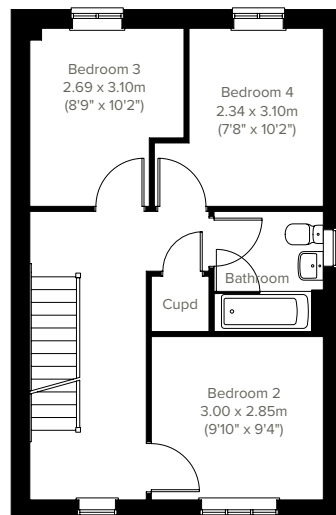
4 bedroom home



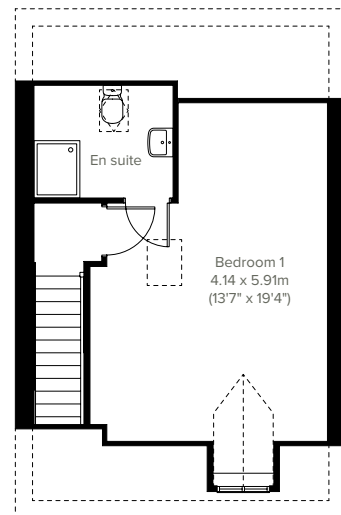
Spread across three floors, the Kennet offers impressive flexibility for family living. The ground floor includes an open plan kitchen/dining room with garden access, a front-aspect living room, utility and WC. On the first floor are three comfortable bedrooms, one with en suite, plus a family bathroom. On the top floor, bedroom one is a welcoming space with its own en suite.



**GROUND FLOOR**



**1ST FLOOR**



**2ND FLOOR**

Please note that elevation treatments and window/door positions may vary from plot to plot. Plot specific information will be confirmed on your reservation check list.

This information is for guidance only and does not form any part of any contract or constitute a warranty. Illustrations are of typical elevations and may vary. Floor plans are not drawn to scale and window positions may vary. Room dimensions are subject to a +/- 50mm (2") tolerance and are based on the maximum dimensions in each room. Please consult your sales advisor on site for specific elevations, room dimensions and external finishes. The PEA ratings are estimated and vary between home types, orientation and developments. Accessible and adaptable dwelling requirements are based upon the internal arrangements only. External requirements may vary between local authority and developments.

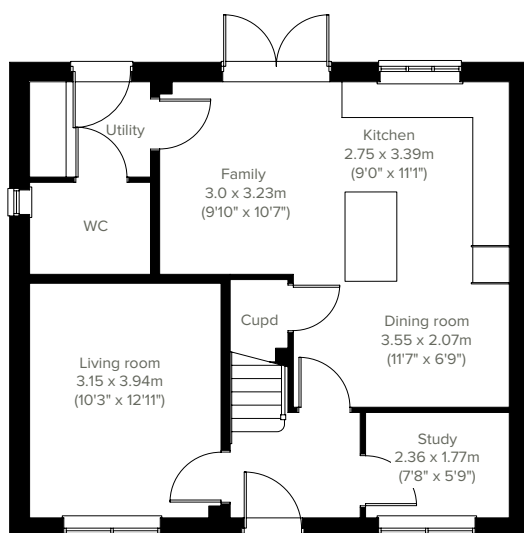


4 bedroom home

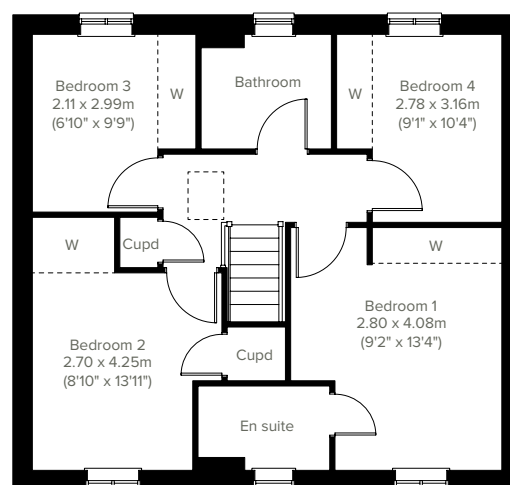
# The Brampton



A beautifully-designed four-bedroom detached home, the Brampton has everything you need for modern living. Downstairs there's a front-aspect living room, a spacious kitchen/dining/family room with French doors leading into the rear garden, and a separate study. The first floor is home to a generous bedroom one with an en suite plus plenty of storage cupboards and the family bathroom.



## GROUND FLOOR



## 1ST FLOOR

Please note that elevation treatments and window/door positions may vary from plot to plot. Plot specific information will be confirmed on your reservation check list.

This information is for guidance only and does not form any part of any contract or constitute a warranty. Illustrations are of typical elevations and may vary. Floor plans are not drawn to scale and window positions may vary. Room dimensions are subject to a +/- 50mm (2") tolerance and are based on the maximum dimensions in each room. Please consult your sales advisor on site for specific elevations, room dimensions and external finishes. The PEA ratings are estimated and vary between home types, orientation and developments. Accessible and adaptable dwelling requirements are based upon the internal arrangements only. External requirements may vary between local authority and developments.

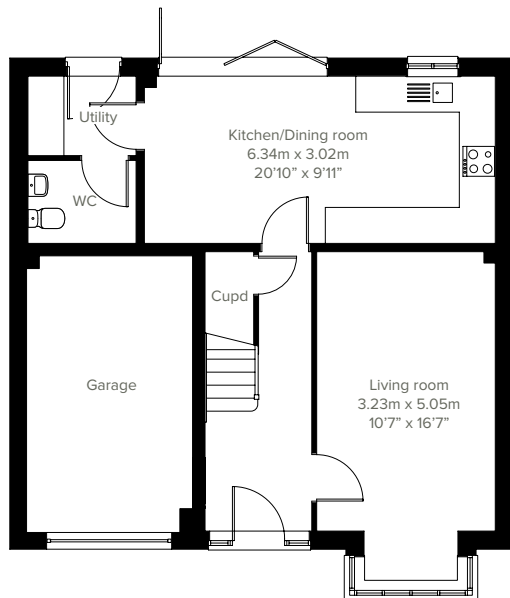


# The Carradale

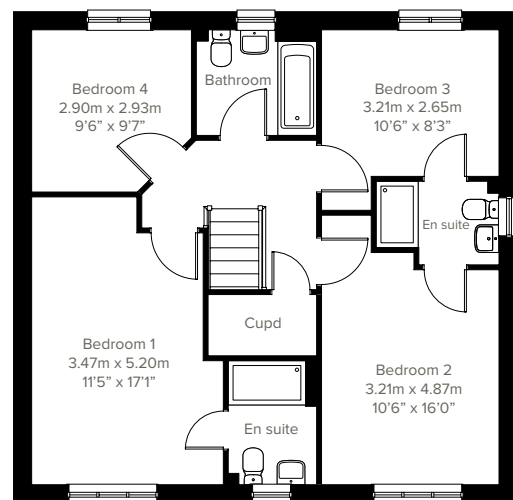
4 bedroom home



The Carradale is a four-bedroom, three-bathroom home, ideal for growing families. There's a bright open plan kitchen/dining room with bi-fold doors to the garden and a separate living room with a bay window. On the first floor you will find the four bedrooms - bedrooms one, two and three all with en suites - and the family bathroom. An integral garage, utility with outside access and a WC make this home a practical choice too.



**GROUND FLOOR**



**1ST FLOOR**

Please note that elevation treatments and window/door positions may vary from plot to plot. Plot specific information will be confirmed on your reservation check list.

This information is for guidance only and does not form any part of any contract or constitute a warranty. Illustrations are of typical elevations and may vary. Floor plans are not drawn to scale and window positions may vary. Room dimensions are subject to a +/- 50mm (2") tolerance and are based on the maximum dimensions in each room. Please consult your sales advisor on site for specific elevations, room dimensions and external finishes. The PEA ratings are estimated and vary between home types, orientation and developments. Accessible and adaptable dwelling requirements are based upon the internal arrangements only. External requirements may vary between local authority and developments.

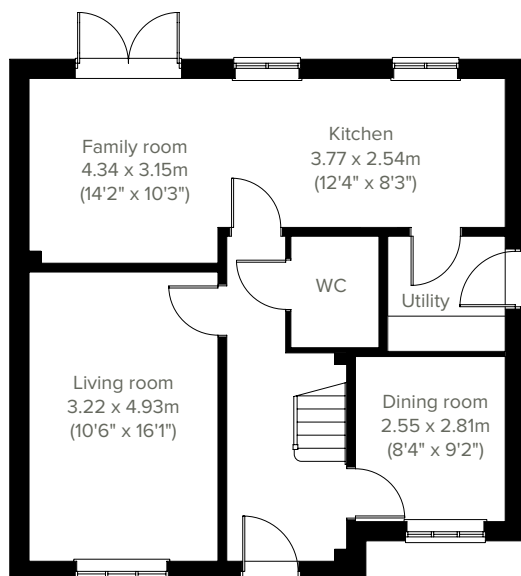


4 bedroom home

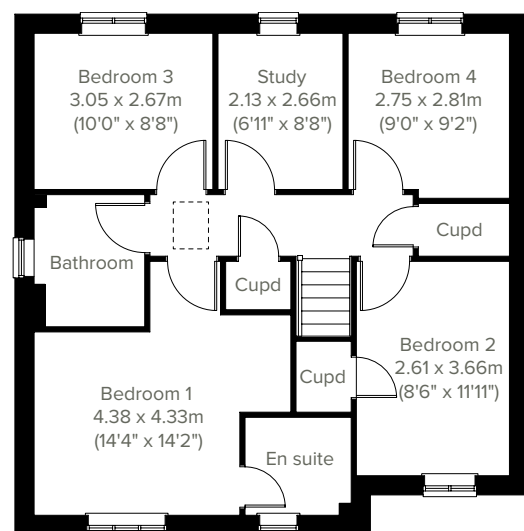
# The Kielder



The Kielder is a superb detached home with a good-sized living room, and a bright open plan kitchen/family room with double doors leading onto the garden and a separate dining room - perfect for family life and entertaining. It's practical too, with a utility, downstairs WC and three storage cupboards. The large bedroom one has an en suite with the spacious landing leading on to three further bedrooms, a study and the main family bathroom.



**GROUND FLOOR**



**1ST FLOOR**

Please note that elevation treatments and window/door positions may vary from plot to plot. Plot specific information will be confirmed on your reservation check list.

This information is for guidance only and does not form any part of any contract or constitute a warranty. Illustrations are of typical elevations and may vary. Floor plans are not drawn to scale and window positions may vary. Room dimensions are subject to a +/- 50mm (2") tolerance and are based on the maximum dimensions in each room. Please consult your sales advisor on site for specific elevations, room dimensions and external finishes. The PEA ratings are estimated and vary between home types, orientation and developments.

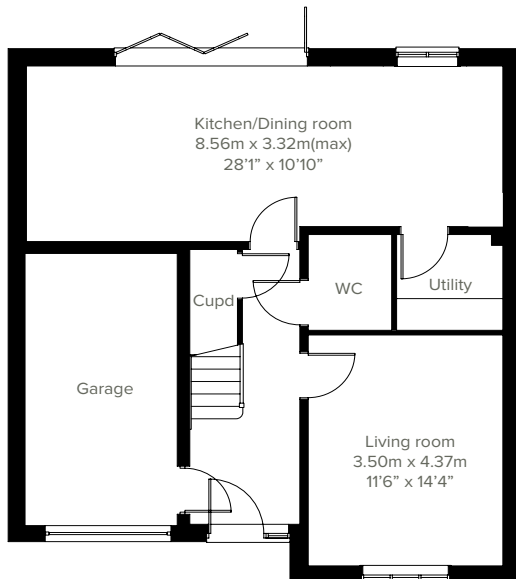


# The Hendon

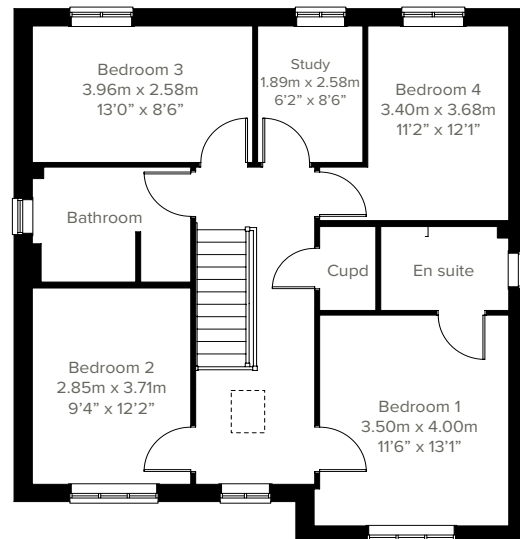
4 bedroom home



The Hendon is a new home that offers plenty of flexibility to a growing family. Whether it's the four bedrooms and two bathrooms, the study, the open-plan kitchen/dining room, or the separate living room, this is a home with a carefully considered layout. The bi-fold doors to the garden let the outside in, and internal access to the integral garage is a practical feature.



**GROUND FLOOR**



**1ST FLOOR**

Please note that elevation treatments and window/door positions may vary from plot to plot. Plot specific information will be confirmed on your reservation check list.

This information is for guidance only and does not form any part of any contract or constitute a warranty. Illustrations are of typical elevations and may vary. Floor plans are not drawn to scale and window positions may vary. Room dimensions are subject to a +/- 50mm (2") tolerance and are based on the maximum dimensions in each room. Please consult your sales advisor on site for specific elevations, room dimensions and external finishes. The PEA ratings are estimated and vary between home types, orientation and developments. Accessible and adaptable dwelling requirements are based upon the internal arrangements only. External requirements may vary between local authority and developments.

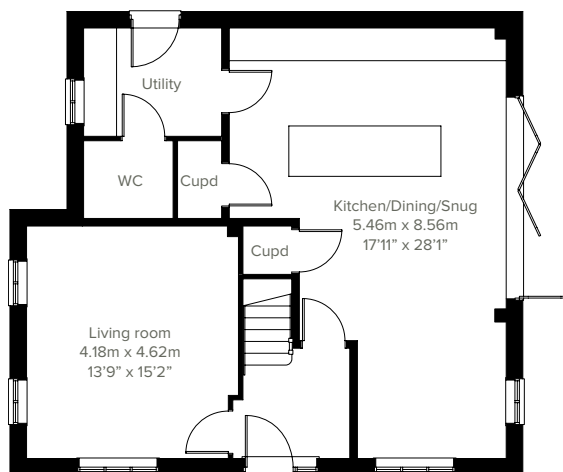


4 bedroom home

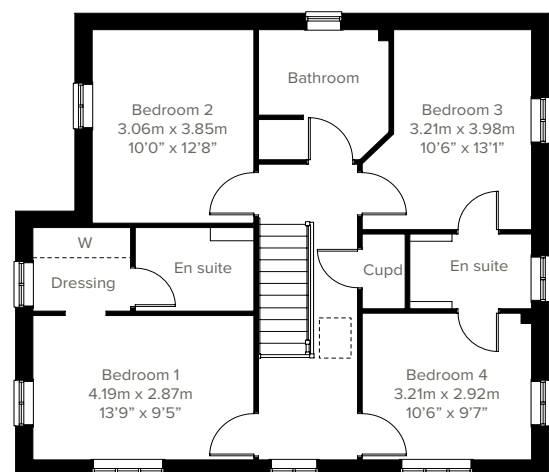
# The Seacombe



A huge open-plan kitchen/dining room that incorporates a snug, an island, and bi-fold doors to the garden is the jewel in the crown of this four-bedroom detached family home. The Seacombe doesn't stop there. There's a separate living room, a utility room with outside access, three bathrooms, a dressing room and en suite to bedroom one, an en suite to bedroom two and a garage. This is a wonderful new home for all aspects of family life.



**GROUND FLOOR**



**1ST FLOOR**

Please note that elevation treatments and window/door positions may vary from plot to plot. Plot specific information will be confirmed on your reservation check list.

This information is for guidance only and does not form any part of any contract or constitute a warranty. Illustrations are of typical elevations and may vary. Floor plans are not drawn to scale and window positions may vary. Room dimensions are subject to a +/- 50mm (2") tolerance and are based on the maximum dimensions in each room. Please consult your sales advisor on site for specific elevations, room dimensions and external finishes. The PEA ratings are estimated and vary between home types, orientation and developments.

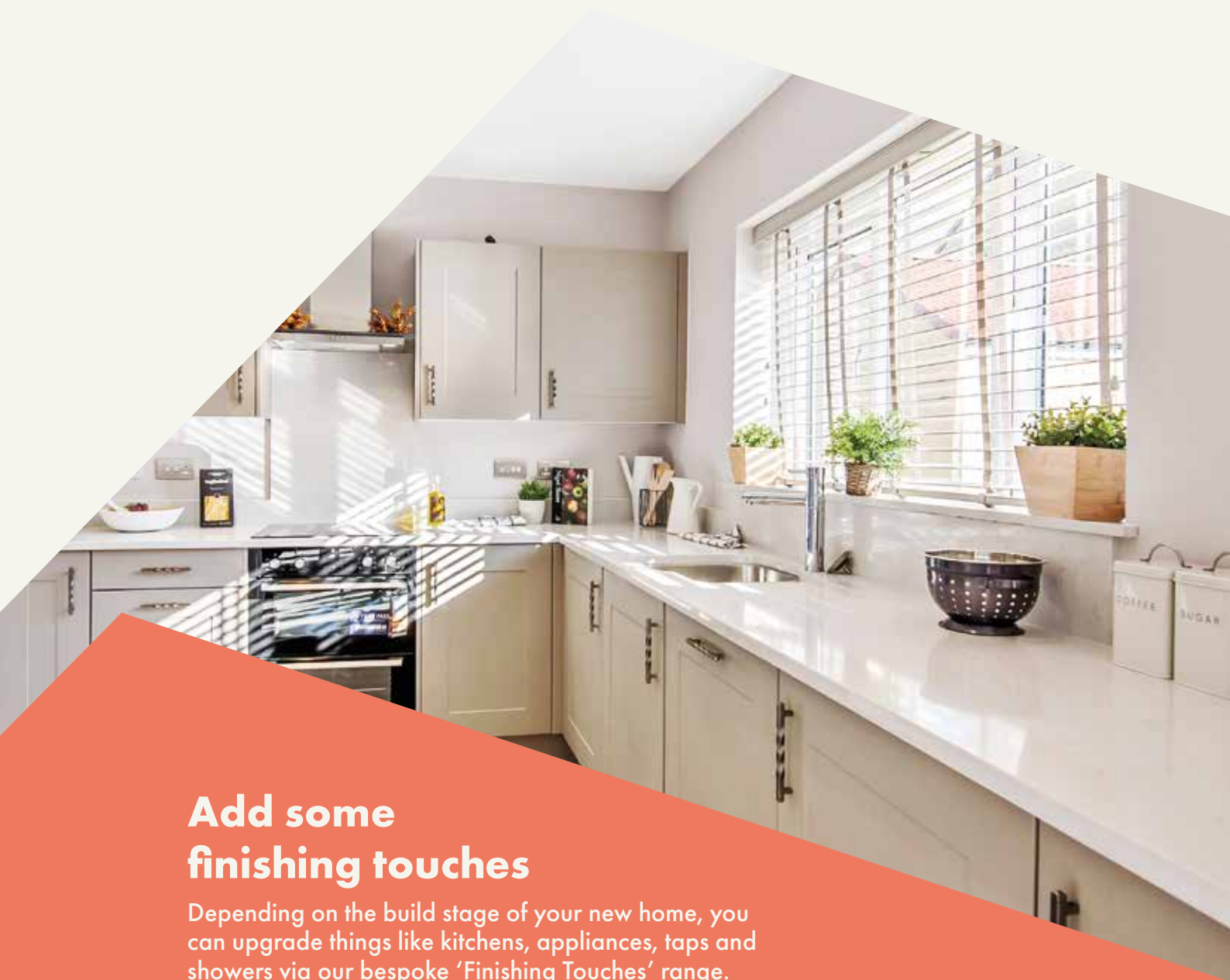




Jubilee Rise

# Specifications

Our homes include these items as standard to ensure you have everything you need to be comfortable from the day you move in. Built for today's modern lifestyles with sustainability in mind.



## Add some finishing touches

Depending on the build stage of your new home, you can upgrade things like kitchens, appliances, taps and showers via our bespoke 'Finishing Touches' range.



## External

### Walls

Traditional cavity walls.  
Inner: timber frame or block.  
Outer: Style suited to planned architecture.

### Roof

Tile or slate-effect with PVCu rainwater goods.

### Windows

Double glazed E-glass windows in PVCu frames.

### Doors

GRP-skinned external doors with PVCu frames.  
French doors to garden or balcony  
(where applicable).

### Electrics

Doorbell and external light to front.



## Internal

### Ceilings

Painted white.

### Lighting

Pendant or batten fittings with low-energy bulbs.

### Stairs

Staircase painted white.

### Walls

Painted in white emulsion.

### Doors

White pre-finished doors with white hinges.

### Heating

Gas fired combi boiler with radiators in all main rooms, with thermostatically-controlled valves to bedrooms.

### Insulation

Insulated loft and hatch to meet current building regulations.

### Electrics

Individual circuit breakers to consumer unit and double electric sockets to all main rooms.

### General

Media plate incorporating TV and telecommunication outlets to living room.



## Bathroom

### Suites

White bathroom suites with chrome-finished fittings.

### Extractor fan

Extractor fan to bathroom and en suite  
(where applicable).

### Shower

Mira showers with chrome fittings to en suite.  
Where there is no en suite, Mira thermostatic shower with wall mounted shower head, complete with shower screen.

### Tiling

Half height tiling to sanitaryware walls in bathroom and en suite.

### Splash-backs

1-course splash-back to WC basin /  
3-course splash-back to bath / fully tiled shower.

### General

En suite to bedroom(s) where applicable.



## Security

### Locks

Three-point locking to front and rear doors, locks to all windows (except escape windows).

### Fire

Smoke detectors wired to the mains with battery back-up.



## Garage & Gardens

### Garage

Garage, car ports or parking space.

### Garden

Front lawn turfed or landscaped  
(where applicable).

### Fencing

1.8 metre fence to rear garden, plus gate.



## Kitchen

### General

Fully-fitted kitchen with a choice of doors and laminate worktop with upstands to match (depending on build stage) with soft closure to all doors and drawers.

### Plumbing

Plumbing for washing machine.

### Appliances

Single electric stainless steel oven, gas hob in stainless steel and integrated cooker hood and splash-back.





Energy efficiency built in

# Sustainability

**Our homes are typically 30% more efficient than traditional UK housing, helping you to save money and reduce your impact on the environment.**

We're proud that we already build our homes to high levels of energy efficiency, but there's still a way to go. Our in-house sustainability team is dedicated to our mission to have net zero carbon homes in use by 2030, and for our own operations to be net zero carbon by 2040.

To achieve this, we're working to science-based carbon reduction targets in line with the Paris Agreement's 1.5°C warming pledge, investing in low-carbon solutions and technology that will further reduce the carbon footprints of our homes and our impact on the planet.

## Energy efficiency built in:

- ✓ **PEA rating – B**  
Our typical B rating makes our homes much more efficient than traditional D-rated homes.
- ✓ **Up to 400mm roof space insulation**  
Warmer in winter, cooler in summer, reducing energy bills.
- ✓ **Argon gas filled double glazing**  
Greater insulation and reduced heat loss.
- ✓ **Energy efficient lighting**  
We use energy-saving LED lightbulbs in all our homes.
- ✓ **A-rated appliances**  
Many of our kitchen appliances have a highly efficient A rating.
- ✓ **A-rated boilers**  
Our condenser boilers far outperform non-condensing ones.
- ✓ **Local links**  
We're located close to amenities and public transport to help reduce your travel footprint.
- ✓ **Lower-carbon bricks**  
Our concrete bricks typically use 28% less carbon in manufacture than clay, giving total lifetime carbon savings of 2.4 tonnes of CO<sub>2</sub> per house built.
- ✓ **Ultra-fast broadband**  
FibreNest fibre-to-the-home connectivity helps you live and work at home more flexibly.

## Eco goodies

When you move in to your new Persimmon home you'll find some of our favourite eco brands in your Homemove box. These products are plastic free, refillable and ethically sourced.





Your home, your way

# Finishing Touches to make it yours

Our goal is to make your house feel like your home before  
you've even collected the keys.

Key to achieving this is giving you the creative freedom to add your own style and personality to every room through our fabulous Finishing Touches collection.

Featuring the very latest designs from a host of leading brands, Finishing Touches lets you personalise your home inside and out. And rest assured, every upgrade and item available has been carefully chosen to complement the style

and finish of your new home. Of course, the real beauty is that all these extras will be ready for the day you move in.

Thanks to our impressive buying power we can offer almost any upgrade you can imagine at a highly competitive price. It can all be arranged from the comfort and convenience of one of our marketing suites, in a personal design appointment.

## You can choose:



Kitchens



Appliances



Bathrooms



Flooring



Wardrobes



Fixtures & fittings

"One of the most exciting things about buying a brand new home is putting your own stamp on a blank canvas."



## Share & win!

Share your love for your new Persimmon home and you could win a £100 IKEA voucher. For inspiration, check out past winners' homes on our Instagram page @persimmon\_homes

**#lovemypersimmonhome**

## The earlier you reserve, the greater the choice

We'll always try and accommodate the Finishing Touches you want, but they are build-stage dependent, so the earlier you reserve the better.

**[persimmonhomes.com/finishingtouches](https://persimmonhomes.com/finishingtouches)**

Finishing Touches are subject to availability and stage of construction. Prices for your specific home type will be in our price list. For a full list of Finishing Touches available for your home, please contact the sales advisor on site.



## Jubilee Rise

Tickow Lane  
Shepshed  
Loughborough  
LE12 9EY

T: 01509 272 755  
E: jubileerise.nmid@persimmonhomes.com  
[persimmonhomes.com/jubilee-rise](https://persimmonhomes.com/jubilee-rise)

## Head Office

Persimmon Homes North Midlands  
Davidson House  
Meridian East  
Meridian Business Park  
Leicester  
LE19 1WZ

T: 0116 281 5600  
E: nmid.sales@persimmonhomes.com  
[persimmonhomes.com](https://persimmonhomes.com)



Issue: September 2025 Ref: 250-194

Persimmon plc, Registered office: Persimmon House, Fulford, York YO19 4FE Registered in England no: 1818486

Jubilee Rise is a marketing name only. The copyright in this document and design is confidential to and the property of Persimmon Homes Developments 2025. These details are intended to give a general idea of the type of home but they do not form part of any specification or contract. The dimensions are approximate and may vary depending on internal finish. By the time you read this some of the details may have changed because of the Persimmon Homes policy of continually updating and improving design features. Therefore, please be sure to check the plan and specification in the sales office to keep you up-to-date with the latest improvements. The vendors of this property give notice that: (i) the particulars are produced in good faith, are set out as a general guide only and do not constitute any part of a contract; (ii) no person in the employment of Persimmon Homes or their authorised agents has any authority to make or give any representation or warranty whatever in relation to this property. Persimmon Homes is compliant with the New Homes Quality Code. Please ask your sales advisor if you have any further questions.