



Grove Road

Bladon, OX20

Guide Price £650,000

A wonderful example of a semi-detached character home believed to date back to the late Victorian / Edwardian era, positioned on a generous plot in the ever-popular village of Bladon, just a stone's throw from the historic town of Woodstock.



THE CHERWELL AGENT
VILLAGE & COUNTRY HOMES



Grove Road

Bladon, OX20

- Beautiful character home
- Generous gardens
- Popular village location
- Close to Woodstock
- Tenure Freehold
- Large driveway
- Character features throughout
- Nearby Blenheim Palace
- Council tax E & EPC E
- Photos and brochure dated June 2024



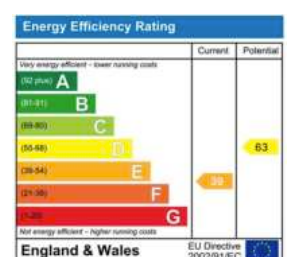
A wonderful example of a semi-detached character home believed to date back to the late Victorian / Edwardian era, positioned on a generous plot in the ever-popular village of Bladon, just a stone's throw from the historic town of Woodstock.

This home is brimming with character, featuring exposed brickwork, traditional fireplaces and beautifully preserved architectural details that add to its timeless appeal. The ground floor enjoys two reception rooms, the formal front reception room with the tradition bay window and feature cast-iron fireplace. The second, the larger of the two, with a wonderful inglenook fireplace and room enough for a dining area. The modern kitchen to the rear opens nicely onto the beautiful garden. Ascending the staircase, the first and second floors boast three well-proportioned bedrooms with an abundance of natural light and healthy amount of storage space. The bathroom is positioned on the first floor and is equally bright and spacious.

Externally, the expansive driveway provides ample parking space for multiple vehicles, often a rare find in such a desirable village location. The extensive rear garden is a true highlight, offering a private and tranquil outdoor space. It's perfect for gardening enthusiasts, family gatherings, or simply enjoying a peaceful afternoon in the sun.

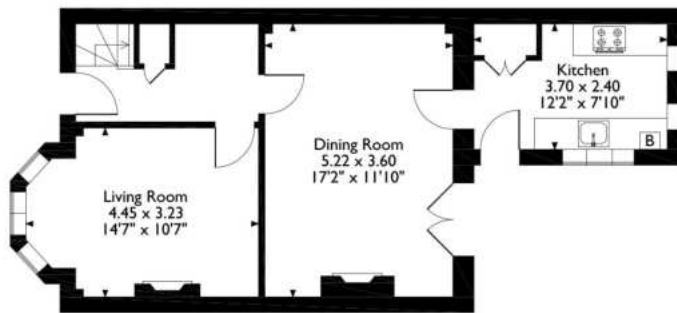
Bladon is a coveted village, enjoying a public house and St Martin's Church - the final resting place of Sir Winton Churchill. Nearby Blenheim Palace has simply stunning grounds to enjoy a stroll. The beautiful market town of Woodstock is nearby and enjoys a choice of shops, restaurants and pubs. Train links to London are also within easy reach; stations at Long Hanborough and Oxford Parkway provide regular services into The Capital.

Tenure: Freehold
 Local Authority: West Oxfordshire
 Council Tax Band: E
 Utilities: Mains gas, electric, water and drainage.

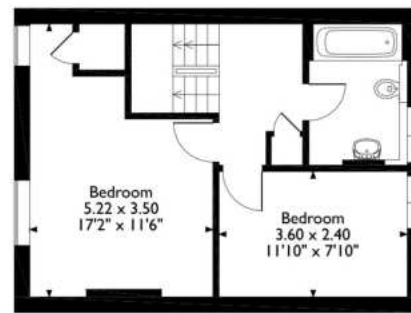




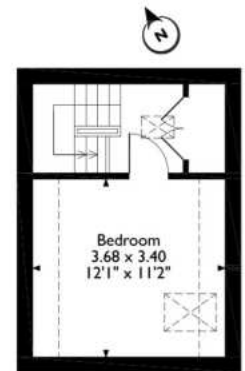
24 Grove Rd, Bladon
Approximate Gross Internal Area
103 Sq M / 1108 Sq Ft



Ground Floor



First Floor



Second Floor

Please note that the location of doors, windows and other items are approximate and this floorplan is to be used for illustrative purposes only. Unauthorized reproduction is prohibited.

The Cherwell Agent hereby gives notice: i) these particulars do not constitute part of an offer or contract; ii) these particulars, pictures and plans are given in good faith and are for guidance only; iii) we have not carried out a structural survey or tested services, appliances or fittings.