

Elizabeth Street

BELGRAVIA SW1W





This charming five-storey Georgian townhouse is arranged with five bedrooms and four bathrooms and extends to 3,037 sq ft / 282 sq m.

The ground and lower floors are dedicated to entertaining space that is complemented by the large south-west-facing terrace, which provides an oasis of calm away from the hustle and bustle of London life.

Situated close to the corner of Gerald Road and opposite the entrance to Chester Square, the house is conveniently located within minutes' walk of Sloane Square and Kings Road.

Please note CGI furniture was added to some images





THE NEIGHBOURHOOD

Developed by the Grosvenor family in the mid 19th century under the direction of the master builder of the time Thomas Cubitt, Elizabeth Street is situated in the heart of The Belgravia Conservation Area. This popular Belgravia location is now synonymous with the vibrant community of artisan shops, restaurants, and cafés. Significant work was done in 2010 to improve pedestrian access, which has drawn in luxury brands and exclusive retailers.

ACCOMMODATION

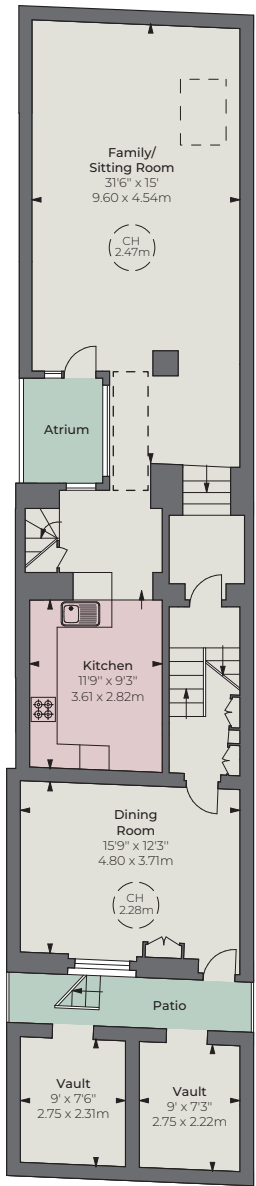
- Kitchen
- Dining room
- Family/sitting room
- Sitting room
- Reception room
- Principal bedroom with en suite bathroom and dressing room
- Three further bedrooms
- Bedroom five/study
- Terrace

TERMS

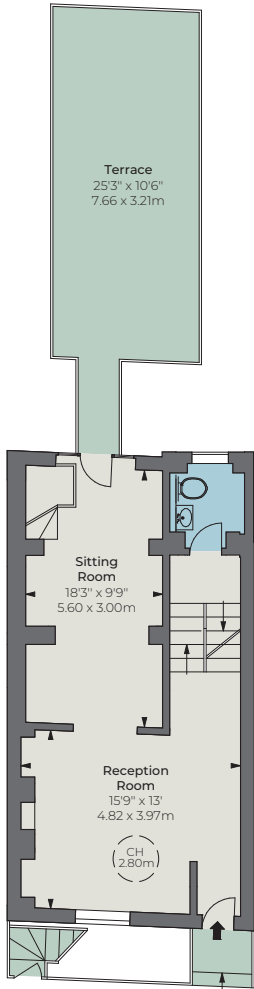
Tenure Freehold
Guide Price £4,650,000 subject to contract
Local Authority City of Westminster
Council Tax Band H
EPC Rating E



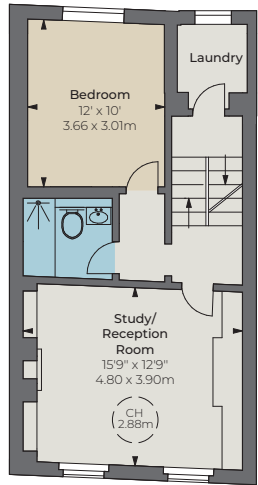
Please note CGI furniture was added to some images



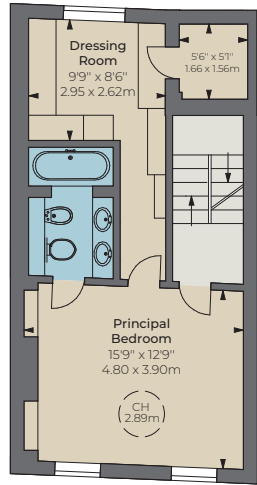
Lower Ground Floor



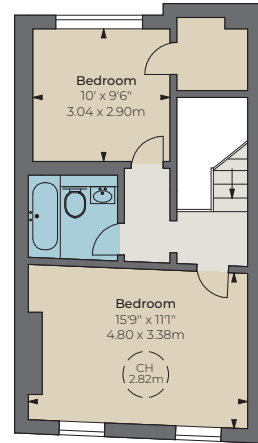
Ground Floor



First Floor



Second Floor



Third Floor

Approximate Gross Internal Area*

2,895 sq ft / 268.96 sq m
excluding vaults
including under 1.5m area

Vaults Area

141 sq ft / 13.19 sq m

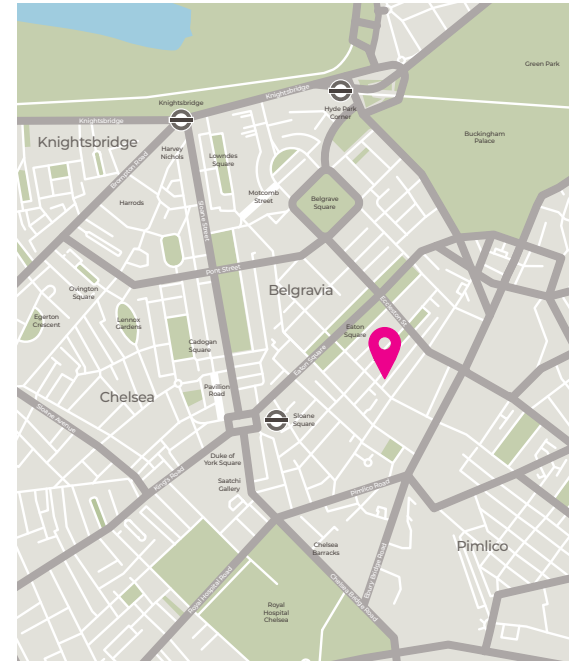
Total Approximate Gross Internal Area*

3,037 sq ft / 282.15 sq m

- Hatched Area: Under 1.5m
- CH: Ceiling height
- Skylight

*Floorplan for guidance only, not to scale or for valuations purposes. It must not be relied upon as a statement of fact. All measurements and areas are approximate and have been prepared in accordance with the current edition of the RICS Code of Measuring Practice.

© Alex Winship Photography Ltd.



Overstrand
PROPERTIES

50 Sloane Avenue, London SW3 3DD
+44 20 7404 9442

sales@overstrand.properties
overstrand.properties

Overstrand Properties and their clients are not responsible for any of the statements in this document, they must not be relied upon as statements of fact. All measurements, areas and distances given are approximate. This document does not form part of any offer or contract. Overstrand Properties have not tested any of the services, appliances and fittings nor has the property been surveyed. It should not be assumed that the property has all necessary building permits or other consents. Particulars produced March 2025, photographs taken February 2025. Overstrand Properties is the trading name of Middleton Advisors Corporate Limited. Middleton Advisors Corporate Limited is registered as a limited company in England and Wales, registered number 07382345. Registered office 22 Baker Street, London W1U 3BW. A list of directors is available for inspection at the registered office. 28/03/25 OVERS-250305-05-GG

THE
BROCHURE
ALEX
WINSHIP