

Ifield Road

CHELSEA SW10





A five-storey Victorian terrace house with a southwest-facing garden and green aspect.

The entrance to the property is on the raised ground floor, which is home to the formal dining area and kitchen. The utility area is to the rear of this floor which opens onto the southwest-facing garden.

The reception space is continued on the lower ground floor with a sitting room, WC and kitchenette which serves as potential ancillary accommodation. The first of the five bedrooms is on the lower ground floor. Storage is continued with under-pavement vaults.

The double reception room occupies almost the entirety of the first floor enabling plenty of entertaining space. The three bedrooms on the second floor are accompanied by a large family bathroom, the bedroom to the rear, can be used as a home office.

The principal bedroom has sweeping views of southwest London and benefits not only from bespoke joinery and a large en-suite bathroom but also a terrace with a southwest-facing aspect.





ACCOMMODATION

- Kitchen
- Dining room
- Double reception room
- Sitting room
- 5 Bedrooms
- 3 Bathrooms
- Cloakroom
- Garden
- Terrace

TERMS

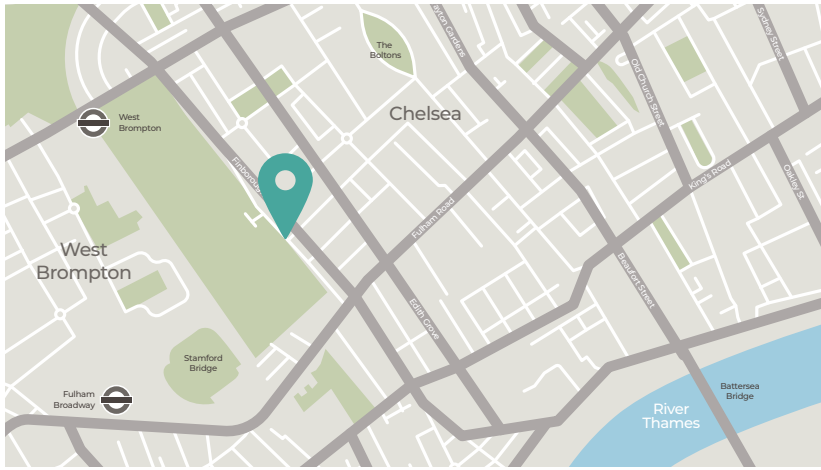
Tenure
Freehold

Guide Price
£3,000,000 STC

Local Authority
Kensington & Chelsea

Council Tax
Band G

EPC Rating D



Approximate Gross Internal Area

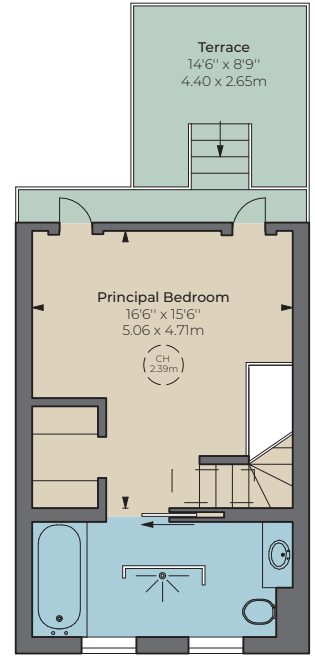
2,706 sq ft / 251.39 sq m

Approximate Gross Vaults Area

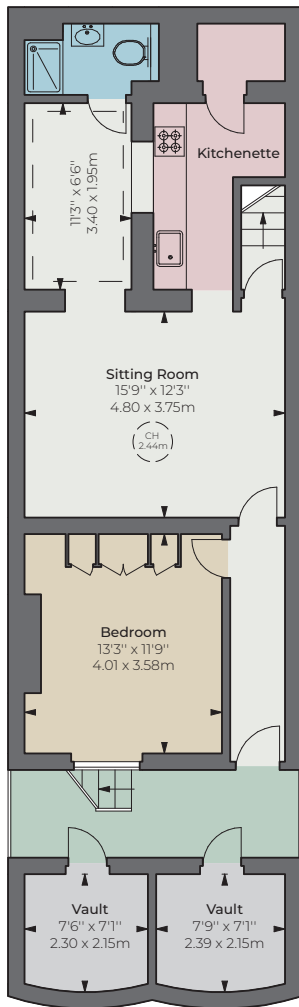
109 sq ft / 10.13 sq m

Total Approximate Gross Internal Area

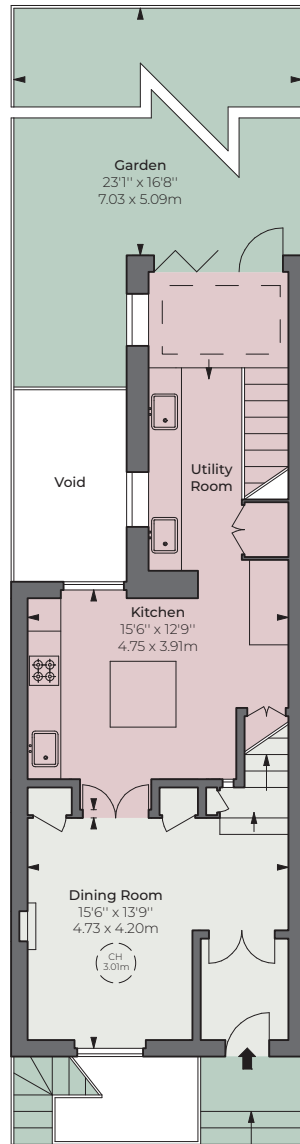
2,815 sq ft / 261.51 sq m



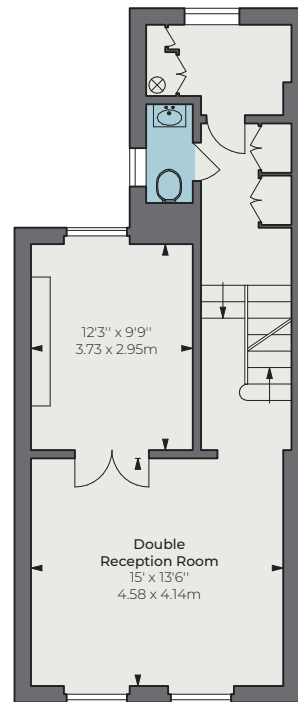
Third Floor



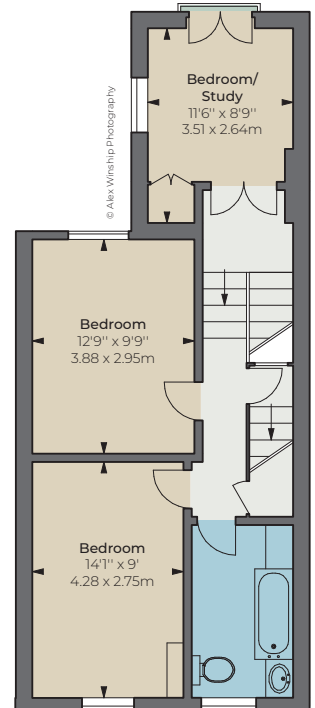
Lower Ground Floor



Ground Floor



First Floor



Second Floor



Overstrand
PROPERTIES

50 Sloane Avenue, London SW3 3DD | +44 20 7088 8081
sales@overstrand.properties | overstrand.properties

Overstrand Properties and their clients are not responsible for any of the statements in this document, they must not be relied upon as statements of fact. All measurements, areas and distances given are approximate. This document does not form part of any offer or contract. Overstrand Properties have not tested any of the services, appliances and fittings nor has the property been surveyed. It should not be assumed that the property has all necessary building permits or other consents. Particulars produced **October 2023**, photographs taken **September 2023**. Overstrand Properties is the trading name of Middleton Advisors Corporate Limited. Middleton Advisors Corporate Limited is registered as a limited company in England and Wales, registered number 07382345. Registered office 31 Hill Street, London W1J 5LS. A list of directors is available for inspection at the registered office. 15/01/25 OVERS-231009C-11MS