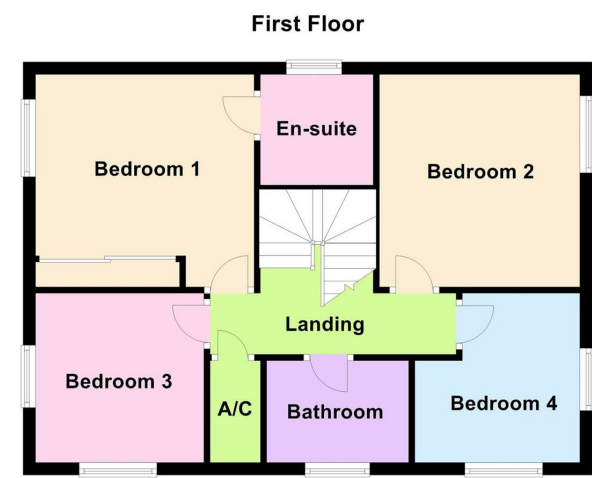
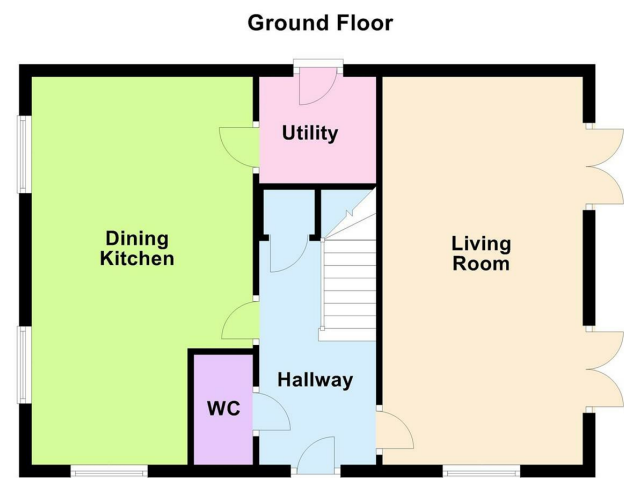


Room Sizes

- Hallway
- Downstairs WC
- Living Room
20'4 x 10'6
- Dining Kitchen
20'4 x 11'6
- Utility Room
- First Floor Landing
- Bedroom One
12'2 x 11'2
- En-Suite
- Bedroom Two
11'2 x 10'10
- Bedroom Three
8'6 x 8'6
- Bedroom Four
8'6 x 8'6
- Family Bathroom



FIXTURES AND FITTINGS All items in the nature of the vendors fixtures and fittings unless otherwise indicated in these sales details excluded from the sale.
VIEWING Via our office at 1a Lutterworth Road Blaby, Leicester, LE9 1RG
Telephone 0116 2772277 Email sara@nestestateagents.co.uk who will be pleased to arrange an appointment to view. Or visit our website at www.nestestateagents.co.uk
FREE PROPERTY VALUATION Looking to sell? Need a valuation?
Excellent area coverage local offices all working together to sell your property. Giving one of the most comprehensive displays in Leicester and County - total coverage for your home.
Call us on 0116 2772277 for free advice.
OFFER PROCEDURE If you are obtaining a mortgage on this property one of our qualified mortgage consultants will contact you to qualify the offer on behalf of our vendors.
MONEY LAUNDERING Money laundering regulations 2003 - Intending purchasers will be asked to produce identification documentation, we would ask for your co-operation in order that there will be no delay in agreeing a sale.
These details do not constitute part of an offer or contract.
Agents notes - FOR ILLUSTRATIVE & VIEWING PURPOSES ONLY. Whilst every attempt has been taken to ensure the accuracy these property particulars are a guide and must not be relied on. The fixtures, fittings, appliances may not be included and must be negotiated within the terms of the sale. Internal photographs are for general viewing and may differ slightly from the current condition of the property. The position and sizes of doors, windows, appliances and other features are for guidance only. Floor plan for illustration purposes only and is not drawn to scale.

Henson Close, Whetstone, Leicester LE8 6PJ

£335,000

The Story Begins

- Modern Detached Family Home
- Tastefully Decorated Throughout
- Driveway, Garage & Enclosed Rear Garden
- Entrance Hallway & Downstairs WC
- Separate Living Room With French Doors
- Open Plan Dining Kitchen & Utility Room
- Family Bathroom & En-Suite Shower Room
- Four Bedrooms
- Energy Rating B
- Council Tax Band E & Freehold, £174 per month Service Charge

Location Is Everything

In Whetstone you'll enjoy a lively local community with plenty going on, there's Blaby & Whetstones Boys Club, a golf course, two good primary schools, St Peters and Badgerbrook, three churches, a few public houses and a good selection of local shops including a post office, a supermarket, a pharmacy and a dentist. Whetstone is located within a close proximity to the city and the open countryside, with excellent access to the motorway networks and Narborough train station.



Inside Story

OFFERED FOR SALE WITH NO UPWARDS CHAIN - Welcome to this modern detached family home located in the sought-after area of Henson Close, Whetstone, Leicester. This property boasts four bedrooms, making it perfect for a growing family or those who enjoy having extra space.

Upon entering, you are greeted by a spacious hallway leading to a convenient downstairs WC. The living room is bright and airy, featuring French doors that open up to the enclosed garden, allowing natural light to flood the room.

One of the highlights of this property is the open-plan dining kitchen, ideal for entertaining guests or enjoying family meals together. The kitchen also includes a utility room, providing additional storage space and keeping household chores out of sight.

Upstairs, you will find four well-appointed bedrooms, offering plenty of room for relaxation and personalisation. The master bedroom comes with an en-suite bathroom, providing a private sanctuary within the home. Additionally, there is a family bathroom to cater to the needs of the household.

Outside, the property features an enclosed garden where you can unwind and enjoy the outdoors in privacy. For those with vehicles, there is a driveway and garage, ensuring ample parking space and storage options. Don't miss out on the opportunity to make this beautiful detached house your new home.

