



## 202 Portsmouth Road

Horndean, Waterlooville, PO8 9HR

Offers in the region of £1,400,000



5



3



4



E





# 202 Portsmouth Road

Horndean, Waterlooville, PO8 9HR

Offers in the region of £1,400,000



## Welcome to Minden...

Welcome to this meticulously renovated and extensively extended five-bedroom detached residence, a true masterpiece of luxury living, located in the prestigious area of Portsmouth Road, Horndean. Sprawling over 3,500sq. ft this home comprises in brief five spacious bedrooms; three bathrooms; four reception areas; incredible kitchen diner with walk-in larder and hidden utility room; boot-room; stunning roof terrace; large garden, garage and gated driveway. This exceptional property seamlessly blends contemporary elegance with timeless architectural charm, offering an unparalleled living experience for those seeking the very best in modern home design.

This property offers four beautifully appointed reception areas on the ground floor, perfect for a variety of uses such as lounge, kid's lounge, snug and family room. These versatile spaces are ideal for entertaining guests, hosting family gatherings, or simply serving as serene retreats for quieter moments. The rooms are distinguished by sophisticated finishes and bespoke details, elevating them into spaces of true distinction and comfort, perfectly blending style and function.

The heart of the home is the expansive, open-plan kitchen and dining area, where state-of-the-art appliances and exquisite craftsmanship combine to create a stunning and functional space. The kitchen is designed for both family life and entertaining, featuring a stunning kitchen island with seating; a full range of integrated appliances including a full length larder-style fridge and freezer, a boiling water Quooker tap, induction hob and dishwasher and there is also a 'hidden' utility room to maintain a sleek and

uncluttered look, with a thoughtfully placed laundry chute from the first floor, for added convenience in daily living. The three sets of curved French Doors on to the garden and the impressive sky lanterns flood the space with light.

On the first floor, the family bathroom is an opulent centerpiece of the house, showcasing a raised bath for indulgent soaks and elegant design elements such as the stunning arch windows and vaulted ceiling that create an atmosphere of grandeur and tranquility, with views across the garden.

The Master Bedroom is without doubt a standout feature of this residence, offering a private terrace complete with a stylish glass balustrade and stunning floor to ceiling arch windows, flooding the room with light. This serene outdoor space is the perfect spot for enjoying a morning coffee or unwinding in the evening with a picturesque view of the surrounding landscape. Of the five bedrooms, four are good-sized double rooms and two boast sumptuous en-suite bathrooms, providing private sanctuaries for relaxation and rejuvenation.

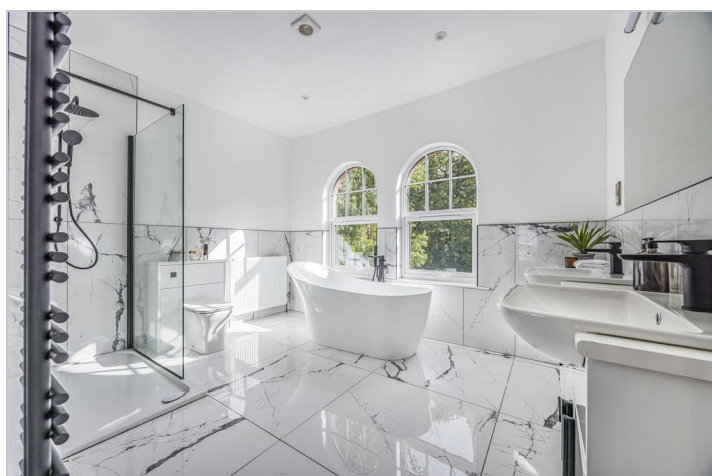
At the front of the property, there is ample parking for several cars on the gated driveway, ensuring convenience for both residents and guests. The large, beautifully landscaped rear garden offers the ideal setting for outdoor activities, gardening, or simply enjoying the tranquil surroundings. Whether entertaining guests or enjoying some quiet time outdoors, this garden provides a peaceful and private escape.

Throughout the property, high-spec finishes and

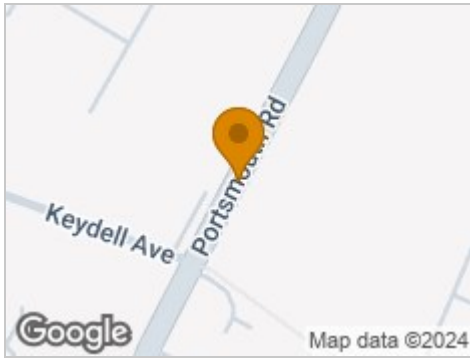
fixtures showcase an unwavering commitment to quality and style. Stunning arch windows fill the home with natural light, enhancing the aesthetic appeal and offering picturesque views of the surrounding landscape. Every detail of this residence has been carefully curated to provide the utmost in comfort, luxury, and sophistication, making it a true testament to high-end living.

Situated in the heart of Horndean, this property offers the perfect blend of rural tranquility and urban convenience. The nearby A3 provides easy access to London, making commuting straightforward. The surrounding villages, including Petersfield and Rowlands Castle, offer boutique shops, fine dining, and countryside walks, while the bustling city of Portsmouth, with its cultural, shopping, and entertainment options, is just a short drive away.

Viewings are strictly by appointment only for those seeking a home that exemplifies luxury living in a prime location.



## Road Map



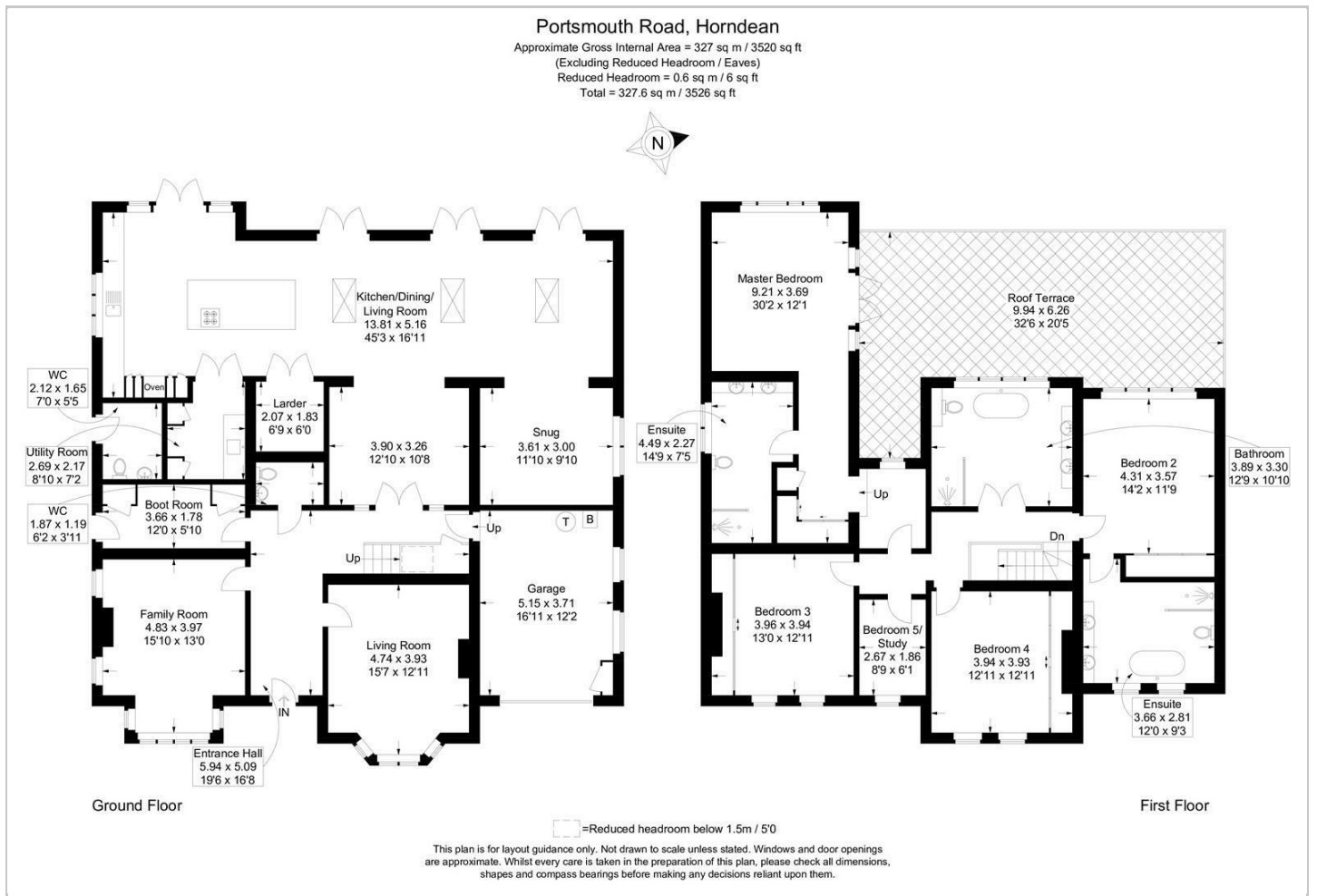
## Hybrid Map



## Terrain Map



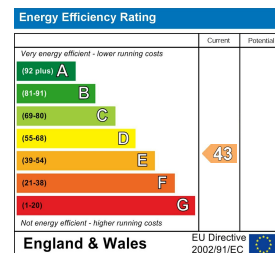
## Floor Plan



## Viewing

Please contact our Central Office on 02394 217317 if you wish to arrange a viewing appointment for this property or require further information.

## Energy Efficiency Graph



These particulars, whilst believed to be accurate are set out as a general outline only for guidance and do not constitute any part of an offer or contract. Intending purchasers should not rely on them as statements of representation of fact, but must satisfy themselves by inspection or otherwise as to their accuracy. No person in this firm's employment has the authority to make or give any representation or warranty in respect of the property.