



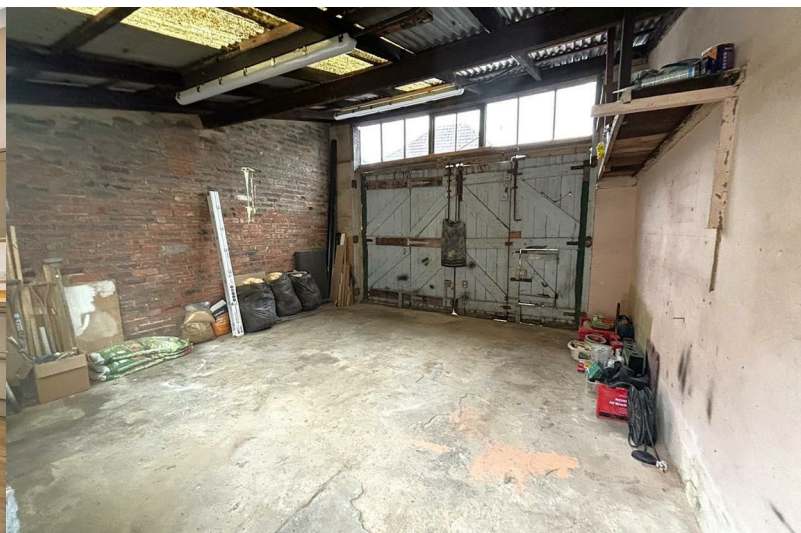
Call: 02394 217317
Whatsapp: 0793 283 1587
Email: sarah@soldby.uk
Social media: @soldbySarahOliver
Website: www.soldby.uk



23 Meon Road

Milton, Portsmouth, PO4 8NL

Offers in the region of £360,000



23 Meon Road

Milton, Portsmouth, PO4 8NL

Offers in the region of £360,000



Welcome to Meon Road...

Introducing this beautifully presented three-bedroom home, situated in the highly desirable location of Meon Road, Milton. Offered with no forward chain, this immaculately presented property is a rare find and offers exceptional living space both inside and out. The standout feature is without doubt, the double garage to the rear.

On the ground floor, you are welcomed into a charming living room featuring a bay window that fills the space with natural light. The heart of the home is the stunning open-plan kitchen and dining area, complete with a newly fitted kitchen. Finished in a stylish sage green, the kitchen includes integrated appliances and offers ample space for entertaining. Adjacent to the kitchen, a lean-to area provides extra storage and space for utility appliances, plus has the option to have a playspace for the kids or an office. Additionally, the ground floor boasts a brand-new shower room and WC. French doors from the kitchen lead out to a low-maintenance rear garden, ideal for relaxing and enjoying outdoor living. The garage can be directly accessed from the garden.

Upstairs, the first floor offers three generously sized bedrooms, perfect for a growing family, as well as a contemporary family bathroom. The white bathroom suite comprises a bath with shower over, wash hand basin, low-level flush WC and heated towel rail. The room is finished with stylish white tiling.

One of the standout features of this property is the double garage located at the rear, accessible via Church Road. With power and lighting, this versatile space offers incredible potential for a home business,

workshop, or valuable off-road parking.

This exceptional home is just moments away from local amenities including local parks and is perfect for families seeking a stylish, move-in-ready residence. Don't miss the opportunity to make this house your forever home—contact us today to arrange a viewing!

Location...

Milton is a charming residential part of Portsmouth, known for its welcoming community, excellent amenities and stunning green spaces. Located to the east of the city, it offers a peaceful suburban atmosphere while being conveniently close to Portsmouth's vibrant city center. Milton boasts a variety of local shops, cafes, and pubs, catering to daily needs and social activities.

For outdoor enthusiasts, Milton Common and the nearby shoreline provide scenic walks, green spaces in Milton Park and Bransbury Park, and opportunities for birdwatching along Langstone Harbour. The area is also home to several well-regarded schools, making it a popular choice for families.

Transport links are convenient, with easy access to the A27 and A3, as well as public transport options connecting Milton to the wider Portsmouth area and beyond.

Overall, Milton offers a perfect blend of coastal charm, community spirit, and modern convenience, making it a desirable place to live for both families and professionals.



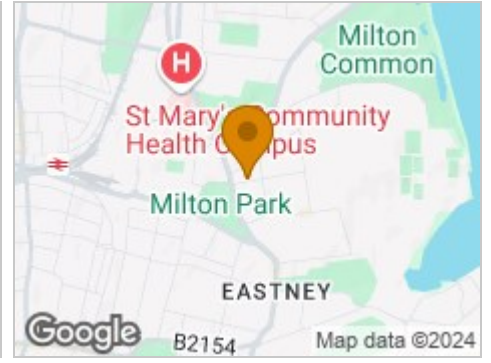
Road Map



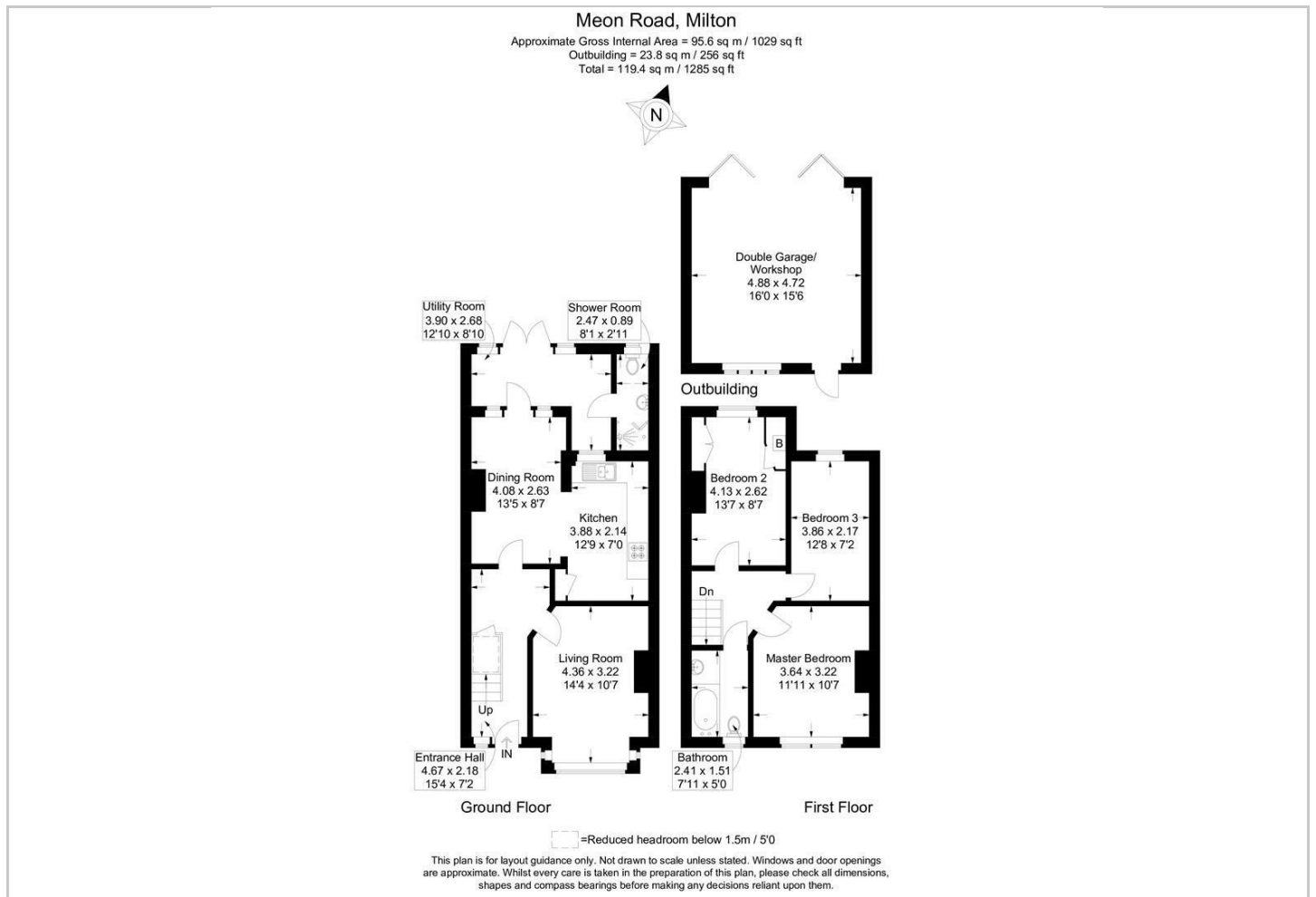
Hybrid Map



Terrain Map



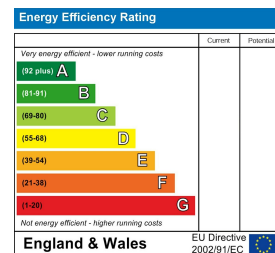
Floor Plan



Viewing

Please contact our Central Office on 02394 217317 if you wish to arrange a viewing appointment for this property or require further information.

Energy Efficiency Graph



These particulars, whilst believed to be accurate are set out as a general outline only for guidance and do not constitute any part of an offer or contract. Intending purchasers should not rely on them as statements of representation of fact, but must satisfy themselves by inspection or otherwise as to their accuracy. No person in this firm's employment has the authority to make or give any representation or warranty in respect of the property.