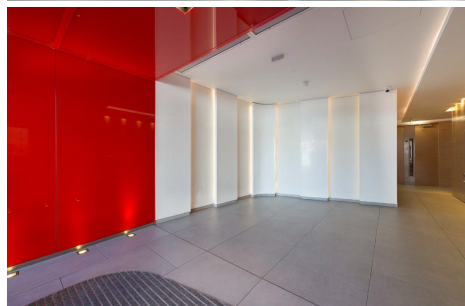
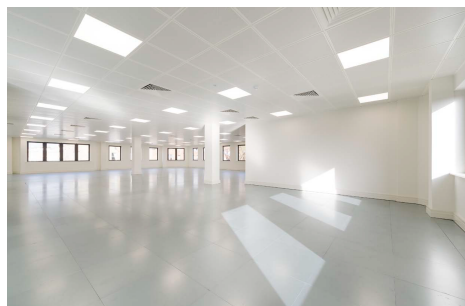


Sovereign House, 361 King Street, Hammersmith, W6

QUALITY OFFICE ACCOMMODATION TO LET FROM 550 SQ FT - 4,577 SQ FT



361 King Street provides refurbished modern office accommodation split across 4 floors, with a refurbished entrance and lobby.

LOCATION

Conveniently situated just a few minutes walk from Stamford brook underground station (district line).

Green spaces characterize the local area including St Peters Square, Ravenscourt Park and Furnivall Gardens and of course there is the River Thames, a short walk away.

The local area is packed full of amenities - restaurants, pubs and bars and coffee shops and easy access east along king street to central Hammersmith and west to Chiswick high road and an abundance of further shopping and Dining options.

ACCOMMODATION

Affordable, flexible, refurbished office accommodation, with suites ranging from 550 - 4,577 sq ft. Features include: LED lighting, New metal ceilings, AC, lift, WCs and shower facilities.

LEASE

Available on flexible terms, subject to a new lease or licence, contracted outside of the 1954 Act.

Rent - Upon Application

USE

The subject premises benefits from office use.

RATES

Interested parties should make their own enquiries to confirm this.

SERVICE CHARGE

Available on request.

LEGAL COSTS

Each party to be liable for their own legal costs.

VIEWINGS

By appointment with John D Wood (020 7629 9050) on the details below:

George Cracknell
07384 897647
georgecracknell@johndwood.com

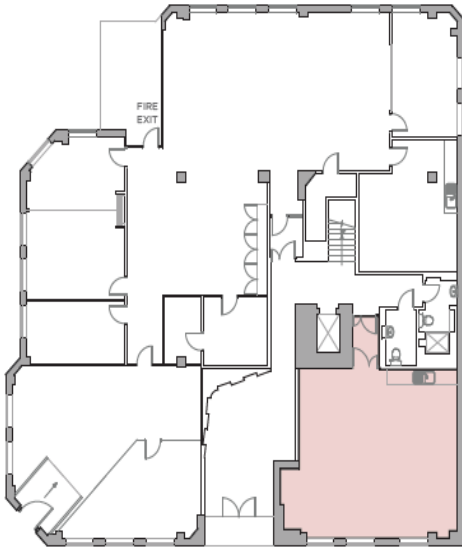
Craig Van Straten
07763 928238
Craigvanstraten@johndwood.com

Sovereign House, 361 King Street, Hammersmith, W6

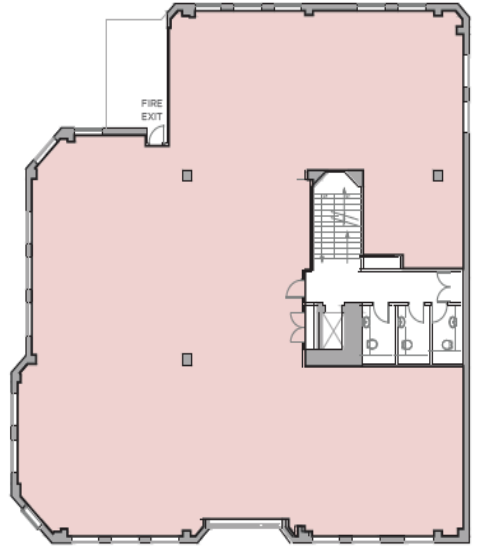
JOHN DWOOD

FLEXIBLE SPACE - THE UPPER FLOORS CAN BE SPLIT TO ACCOMMODATE REQUIREMENTS FROM APPROXIMATELY

550 SQ FT - 4,577 SQ FT (51.10 SQ M - 425.22 SQ M)



GROUND FLOOR 550 SQ FT, 51.09 SQ M



FIRST FLOOR 4,027 SQ FT, 374.12 SQ M

