



33/8 Peffer Bank

Peffermill, Edinburgh, EH16 4FE

We sell homes, not just houses





Summary

Situated in popular Peffermill, served by excellent local amenities and convenient city bus services day and night, this appealing two-bedroom flat lies on the first floor of a contemporary development that includes on-site parking and maintained gardens for all residents to use and enjoy. The flat features neutral interiors that provide both space and practicality with an en-suite shower room, a separate bathroom, useful storage, and a stylish integrated kitchen open to a bright reception room. This leads to a suntrap seating balcony with a peaceful outlook across open greenery - a delightful spot to wind down with evening drinks after a busy day! The property further benefits from gas central heating and double glazing.

Extras: All fitted floor and window coverings and light fittings are included.

Factor: The development is managed by Ethical Maintenance, 239 Castle House 1 Baker Street Stirling FK8 1AL. Approximate costs £100 PCM. This includes communal electricity, communal cleaning, and maintenance of communal garden grounds. Water tank safety checks. External bin cleaning. Lift maintenance. Lift telephone line

Features

- City location with good local amenities and bus links
- Maintained contemporary development
- Spacious first-floor flat with neutral décor
- Communal stairwell
- Entrance hall with storage and entry system
- Sunny living/dining room open to an integrated kitchen
- Principal suite with storage and shower room
- Second double bedroom
- Bathroom with shower-over-bath
- Suntrap seating balcony with pleasant views
- Communal gardens and on-site parking
- Gas central heating and double glazing
- Freehold Property
- EPC Rating - B
- Council Tax Band - D





A sunny living/dining room
open to an integrated kitchen





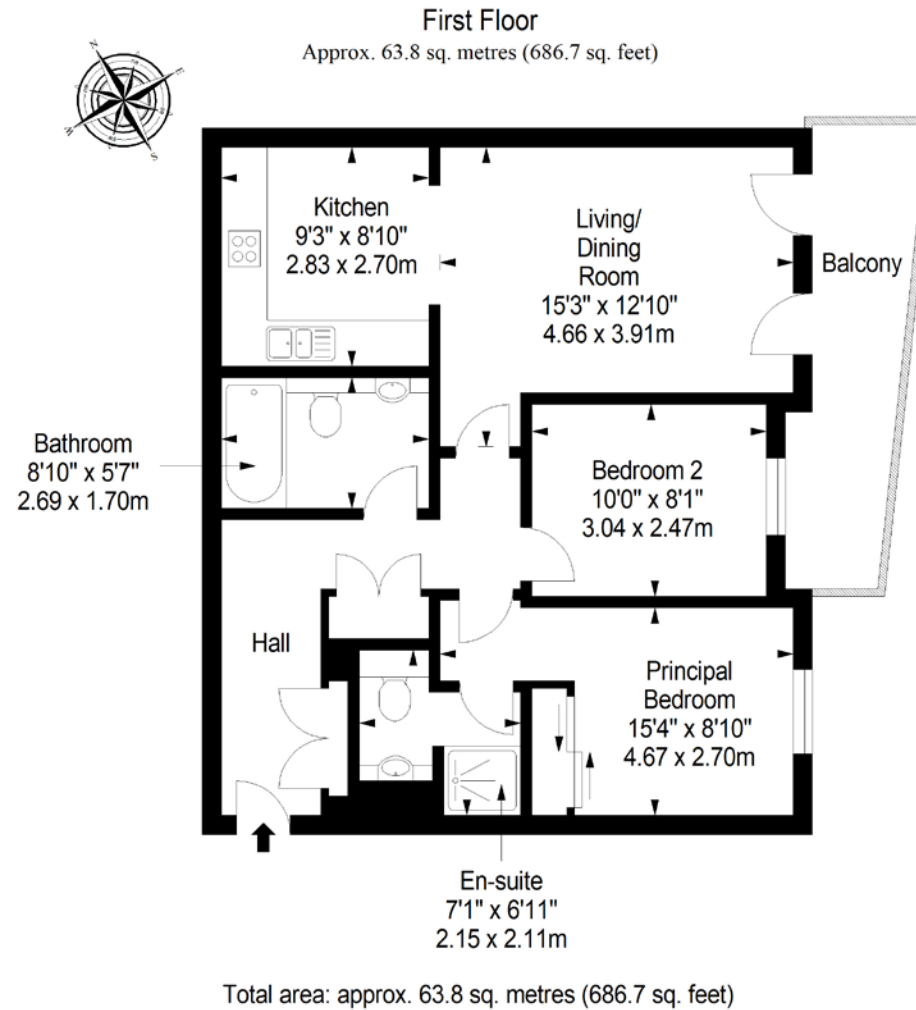


A Principal suite with storage
and shower room and a second
double bedroom





Floorplan



20-22 Torphichen Street, Edinburgh, EH3 8JB
0131 337 7771
www.clancys-solicitors.co.uk

DISCLAIMER
These particulars are intended to give a fair description of the property but their accuracy cannot be guaranteed, and they do not constitute or form part of an offer of contract. Intending purchasers must rely on their own inspection of the property. None of the above appliances/services have been tested by ourselves. We recommend purchasers arrange for a qualified person to check all appliances/services before legal commitment. Whilst every attempt has been made to ensure the accuracy of the floorplan contained here, measurements of doors, windows, rooms and any other items are approximate and no responsibility is taken for any error, omission, or misstatement. This plan is for illustrative purposes only and should be used as such by any prospective purchaser.

rightmove OnTheMarket espc zoopla

