



Battersby Junction, Battersby

Offers In Region Of £420,000

4 3 3



- Spacious end terraced house in Battersby Junction with beautifully presented
- Convenient utility room adjacent to the kitchen for added practicality.
- Cosy living room with open fire, ground floor bathroom, and home office.
- Open-plan kitchen with underfloor heating, centre island, and French doors
- Opening to the garden. The first floor, one with ensuite shower room and separate
- Wonderful sized garden laid to lawn, driveway parking, and double garage offer ample outdoor space and storage.



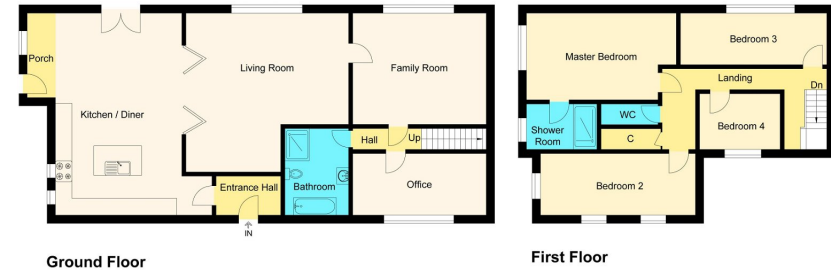


Illustration for identification purposes only, measurements are approximate, not to scale.

This spacious end terraced house in Battersby Junction offers beautifully presented interiors including an open-plan kitchen, four bedrooms with ensuite, cozy living spaces, and a wonderful garden with driveway parking and a double garage, perfect for modern family living in a serene rural setting.

Score	Energy rating	Current	Potential
92+	A		
81-91	B		82 B
69-80	C		
55-68	D	66 D	
39-54	E		
21-38	F		
1-20	G		

