



The Gables, Skutterskelfe

Offers Over £500,000

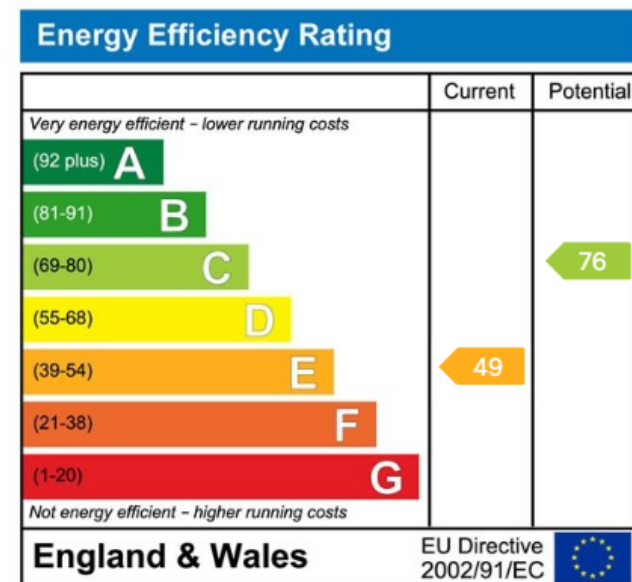
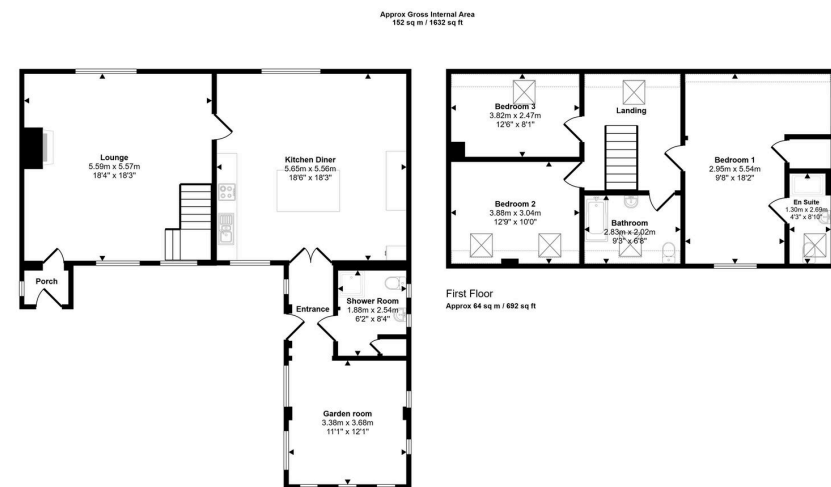
3 3 2

- 1,632 sq ft
- Spacious kitchen diner with granite island.
- Three bedrooms, including en-suite to principal.
- Converted in 1995, full of character and charm.
- Cosy lounge with log-burning stove.
- Private gardens, car port and additional parking



The Gables is a rarely available Victorian barn conversion that blends character and comfort in a tranquil, private setting between Stokesley and Hutton Rudby.





📍 26-28 High Street, Stokesley, Middlesbrough, TS9 5DQ

@ stokesley@harveybrooks.com

☎ (01642) 687 223

🌐 www.harveybrooks.com

