



Ryehill Cottages, Nunthorpe

£550,000

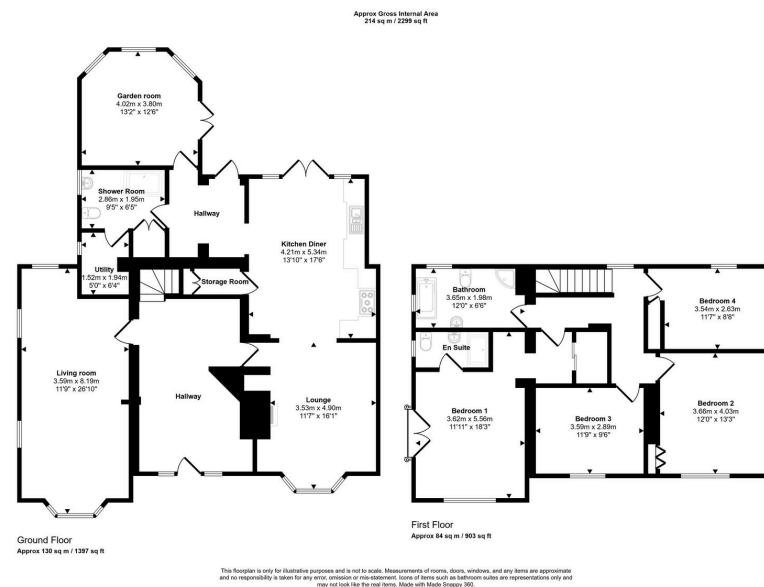
🛏 4 🚿 3 🛋 3

- Tastefully presented character home.
- Four bedrooms.
- Great views of open countryside.
- Superb semi-rural location.
- Open-plan kitchen diner.
- 2,299 sq ft



Stunning location | Tastefully presented | Gorgeous open views.





Score	Energy rating	Current	Potential
92+	A		
81-91	B		
69-80	C	73 C	77 C
55-68	D		
39-54	E		
21-38	F		
1-20	G		

📍 26-28 High Street, Stokesley, Middlesbrough, TS9 5DQ

@ stokesley@harveybrooks.com

☎ (01642) 687 223

🌐 www.harveybrooks.com

