




Springfield Mews, Stokesley

Offers In Region Of £295,000

 2  2  2



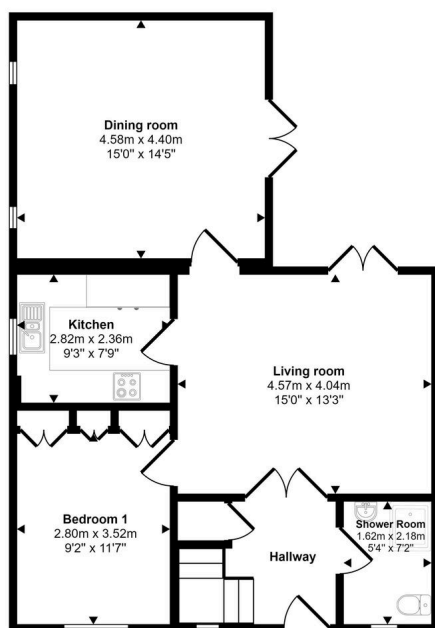
Deceptively spacious | No onward chain | Close to the High Street.




Key Features

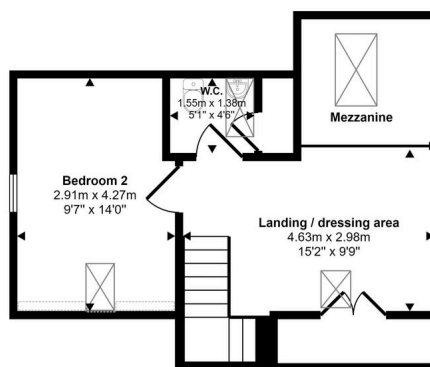
- Deceptively spacious two bedroom mews property.
- Perfect for those seeking comfortable low maintenance living.
- Situated within a five minute walk of the High Street.
-
-
- Offered to the market with no onward chain.
- Pleasant communal gardens.
- Ground floor bedroom and shower room.
-
-

Approx Gross Internal Area
103 sq m / 1109 sq ft



Ground Floor
Approx 70 sq m / 758 sq ft

 Denotes head height below 1.5m



First Floor
Approx 33 sq m / 350 sq ft

This floorplan is only for illustrative purposes and is not to scale. Measurements of rooms, doors, windows, and any items are approximate and no responsibility is taken for any error, omission or mis-statement. Icons of items such as bathroom suites are representations only and may not look like the real items. Made with Made Snappy 360.

