





# The Paddock, Stokesley

£350,000

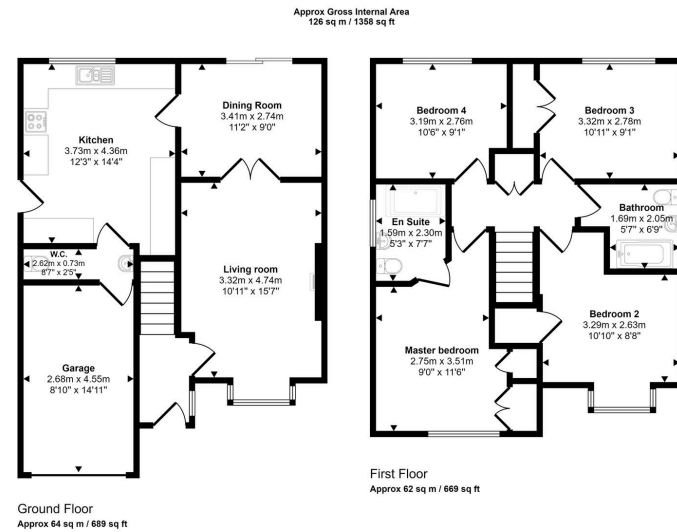
🛏️ 4 🚿 2 🛋️ 2





- Four bedroom family home.
- Contemporary en-suite shower room.
- Offered to the market with no forward chain.
- Situated in a quiet cul-de-sac within a short walk of the High Street.
- Two reception rooms on the ground floor.
- Driveway leading to a single garage.





This floorplan is only for illustrative purposes and is not to scale. Measurements of rooms, doors, windows, and any items are approximate and no responsibility is taken for any error, omission or mis-statement. Icons of items such as bathroom suites are representations only and may not look like the real items. Made with Made Spappy 360.

Four bedrooms | Family home | No onward chain.

Score	Energy rating	Current	Potential
92+	A		
81-91	B		83 B
69-80	C	69 C	
55-68	D		
39-54	E		
21-38	F		
1-20	G		

📍 26-28 High Street, Stokesley, Middlesbrough, TS9 5DQ

✉ stokesley@harveybrooks.com

☎ (01642) 687 223

🌐 www.harveybrooks.com

