



Eden Close, Hutton Rudby

£595,000

🛏️ 5 🍴 3 🚿 2



About this property...

A superb opportunity to secure a spacious five bedroom family home offering 2,751 sq ft of living space occupying a superb corner plot within a quiet and peaceful cul-de-sac in Hutton Rudby. Offering well proportioned living accommodation across two levels, the property is finely tuned towards the growing family and provides a home office on the ground floor, an stunning open-plan kitchen and an en-suite shower room to the master bedroom. Externally, expansive mature private gardens enjoy the sun for most of the day and provide a superb space for entertainment, relaxation and play.

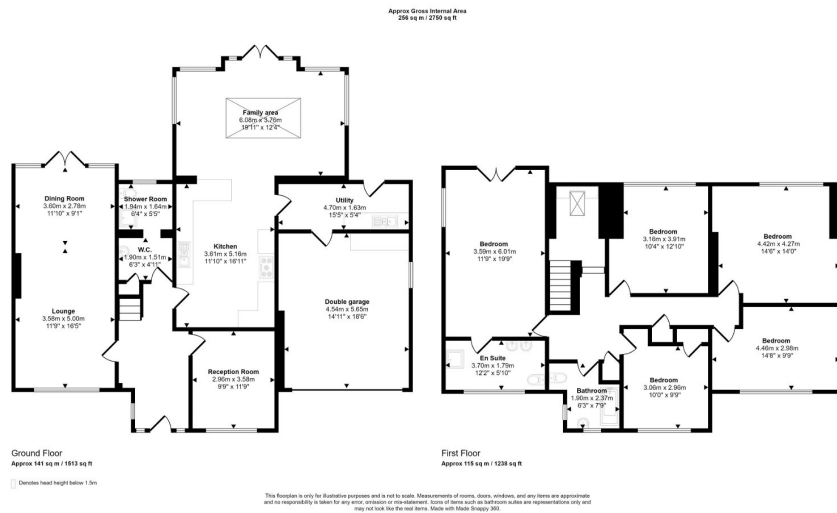
About this location...

Hutton Rudby, a picturesque village nestled in the Hambleton District of North Yorkshire, is a delightful place situated just 4 miles (6.4 km) west of the bustling market town of Stokesley. Conveniently located close to the A19, this charming village offers residents and visitors easy access to nearby towns such as Middlesbrough, Yarm, and Northallerton.

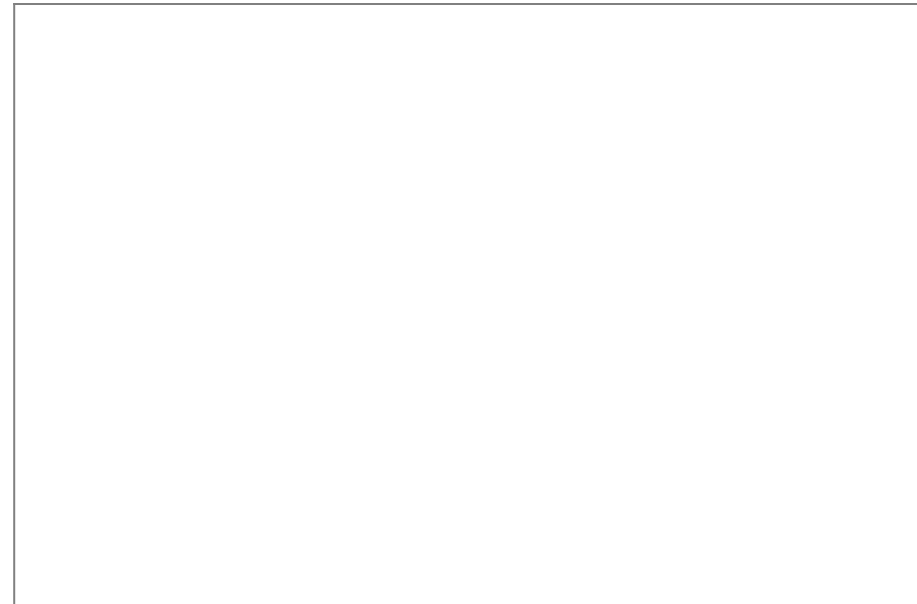
One of Hutton Rudby's defining features is its connection to the village of Rudby, which is made possible by a bridge spanning the scenic River Leven. This bridge not only provides a physical link between the two villages but also adds to the area's charm and beauty.

The village of Hutton Rudby is notable for its abundance of village greens, a testament to its agricultural heritage with numerous livestock farmers in the area. This pastoral backdrop adds to the village's picturesque appeal.





- Substantial family home in a peaceful cul-de-sac.
- Extensive rear gardens which are highly private and well screened.
- Master bedroom with en-suite shower room.
- Situated in the highly desirable village of Hutton Rudby.
- Open-plan family kitchen with lantern roof.
- Home office, utility room and ground floor shower room.



📍 26-28 High Street, Stokesley, Middlesbrough, TS9 5DQ

✉ stokesley@harveybrooks.com

☎ (01642) 687 223

🌐 www.harveybrooks.com

