



Wainstones Close, Great Ayton

Offers In Region Of £340,000

3 1 1



About this property...

This three bedroom detached property is offered to the market with no onward chain and presents a superb opportunity for those buyers looking to make their own mark and add some value.

Entrance hallway -PVCu double glazed entry door and staircase providing first floor access with storage beneath.

Living room -Front aspect PVCu double glazed window. Double glazed patio doors lead out on to the rear garden.

Kitchen - Comprising a range of fitted base and wall units with matching work surfaces and tiled splash backs. Appliances to include: Composite sink with rinse bowl, drainer and mixer tap, built-in fan assisted electric oven, four ring gas hob and plumbing for washing machine.

Rear porch - A single door provides external access.

Bedroom -Front aspect PVCu double glazed window.

Ground floor bathroom -Suite comprising: Panelled bath, separate fully tiled shower enclosure with wall mounted electric shower, wash hand basin and close coupled WC.

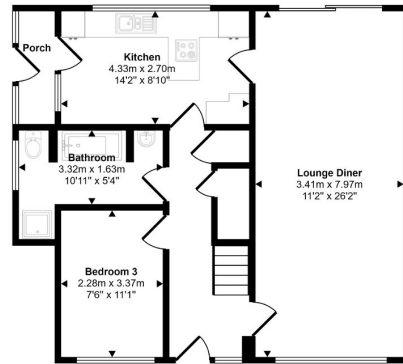
First floor

Bedroom -Fitted wardrobes and front aspect PVCu double glazed window.

Bedroom -Fitted wardrobes and front aspect PVCu double glazed window.



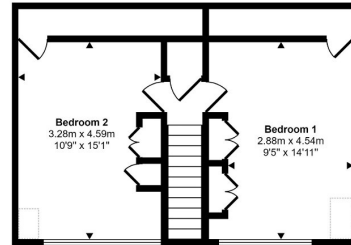
Approx Gross Internal Area
109 sq m / 1175 sq ft



Ground Floor
Approx 68 sq m / 733 sq ft

Denotes head height below 1.5m

This floorplan is only for illustrative purposes and is not to scale. Measurements of rooms, doors, windows, and any items are approximate and no responsibility is taken for any error, omission or mis-statement. Icons of items such as bathroom suites are representations only and may not look like the real items. Made with Made Snappy 360.



First Floor
Approx 41 sq m / 442 sq ft

- Occupying a superb plot in a desirable cul-de-sac in Great Ayton.
- Offered to the market with no onward chain.
- Driveway leading to a single garage.
- Great potential to make your own mark and add value.
- Ground floor bathroom.
- Rarely available to the market.



📍 26-28 High Street, Stokesley, Middlesbrough, TS9 5DQ

✉ stokesley@harveybrooks.com

☎ (01642) 687 223

🌐 www.harveybrooks.com

