



High Street, Great Broughton

Offers In Region Of £1,250,000

4 3 3



About this property...

Welcome to Parkholme - Your Perfect Village Retreat.

Nestled in the picturesque landscape of Great Broughton, Parkholme offers the epitome of stylish living. Boasting a tasteful upgrade by its current owners, this exquisite property is sure to captivate the hearts of discerning buyers.

As you approach, you'll be greeted by a grand entrance featuring a sweeping gravel driveway and electric gates, setting the tone for the elegance that awaits within. Situated on extensive landscaped grounds, Parkholme offers ample space for outdoor enjoyment and relaxation.

Ideal for families seeking both beauty and functionality, this home features spacious interiors designed to accommodate modern lifestyles. But the true highlight? A luxurious swimming pool and open-plan gymnasium, offering a rare blend of wellness and leisure right at your doorstep.

Parkholme is not just a home; it's a lifestyle upgrade waiting to be experienced. Don't miss out on this rare gem - it's sure to attract substantial interest. Book your viewing today and step into your dream residence.

Ground floor

Step into luxury as you enter this exquisite village home. The ground floor welcomes you with a spacious hallway boasting a vaulted ceiling and roof lights, flooding the space with natural light. To the left, discover a cosy living room featuring a multi-fuel stove and dual aspect windows offering picturesque views of the surroundings.

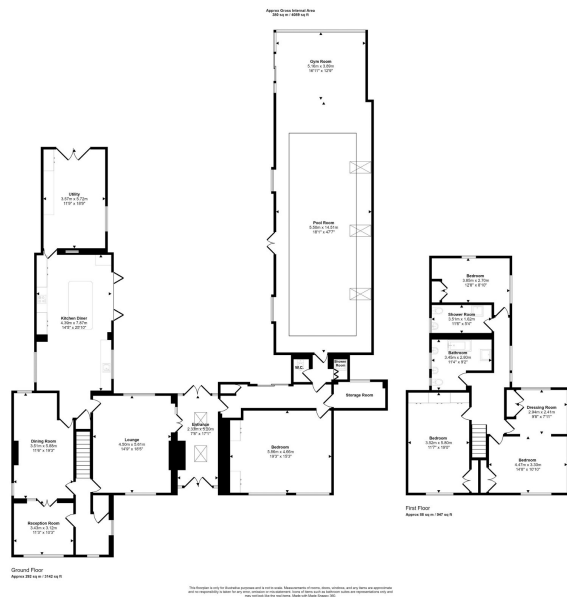
As you move through the inner hall, a staircase leads to the first floor, while conveniently placed along the way, you'll find a home office and a spacious dining room, perfect for hosting gatherings.

Prepare to be dazzled by the heart of the home - a high-quality dining kitchen with a centre island, two ovens, grill, microwave, hob, full-



HARVEY
BROOKS





- Luxurious village home with stylish upgrades throughout.
- Spacious landscaped gardens featuring a putting green and vast lawn area.
- Thoughtfully designed interior includes a high-quality dining kitchen, multiple bedrooms with built-in wardrobes, and contemporary bathrooms.
- Sweeping gravel driveway with electric remote-controlled entrance and exit gates.
- Games or entertaining area with a hot tub, perfect for relaxation and gatherings.
- 4,089 sq ft.



Score	Energy rating	Current	Potential
92+	A		
81-91	B		
69-80	C		71 C
55-68	D	58 D	
39-54	E		
21-38	F		
1-20	G		

📍 26-28 High Street, Stokesley, Middlesbrough, TS9 5DQ

✉ stokesley@harveybrooks.com

☎ (01642) 687 223

🌐 www.harveybrooks.com

