



Manor Cottage, Carlton-in-Cleveland

Offers In Region Of £550,000



Here to help you move.

Manor Cottage, Carlton-in-Cleveland

Quintessential North Yorkshire charm awaits in this Grade 2 listed cottage, dating back to 1750, nestled in the picturesque village of Carlton. Boasting original features, modern amenities, and a professionally landscaped garden, it offers a timeless retreat for those seeking style and character in a sought-after location.

About this property...

This Grade 2 listed cottage, dating back to 1750, exudes charm and history. Its façade adorned with sliding and vertical sash windows offers glimpses into the past, while inside, original beams stand as silent witnesses to centuries gone by. A double-sided log-burning stove casts a warm glow, inviting cosy evenings by the fire. Situated in a sought-after village location, this quintessential Yorkshire cottage is an idyllic haven for those seeking style and character, a timeless retreat amidst the tranquillity of rural life.

About this location...

Nestled on the outskirts of the North York Moors National Park, the village of Carlton embodies the epitome of rural charm. With its idyllic surroundings, Carlton exudes a sense of timeless beauty. The village boasts essential amenities such as a primary school and a church, serving as the heart of the community. At the heart of village life stands the iconic Blackwell Ox Pub, a beloved local establishment where residents and visitors alike gather to unwind and socialize. Surrounded by breath-taking natural scenery, Carlton is a haven for outdoor enthusiasts, with its proximity to Carlton Bank and the Cleveland Hills offering endless opportunities for walkers and cyclists to explore the rugged beauty of the landscape.





Ground floor

Upon entering the ground floor of this enchanting cottage, you are greeted by a cozy dining room boasting a double-sided multi-fuel stove, casting a warm ambiance throughout. On the opposite side awaits the living room, adorned with exposed original beams, preserving the cottage's historic charm. The kitchen, generously sized, offers a comfortable lounging area with underfloor heating, perfect for gathering with loved ones. Equipped with top-of-the-line appliances including a Falcon double oven, built-in microwave, fridge, freezer, dishwasher, and washer dryer, the kitchen is a haven for culinary enthusiasts. Granite worktops and a breakfast peninsula add a touch of elegance to this rustic yet modern space, creating the perfect setting for both casual meals and culinary adventures.

First floor

Ascending to the first floor, this charming cottage unveils three inviting bedrooms, each offering a peaceful sanctuary for rest and relaxation. One of the bedrooms boasts a generously sized en-suite bathroom, providing convenience and privacy for its occupants. Additionally, a separate shower room ensures ample facilities for guests and residents alike, catering to the needs of modern living while preserving the cottage's historical appeal.



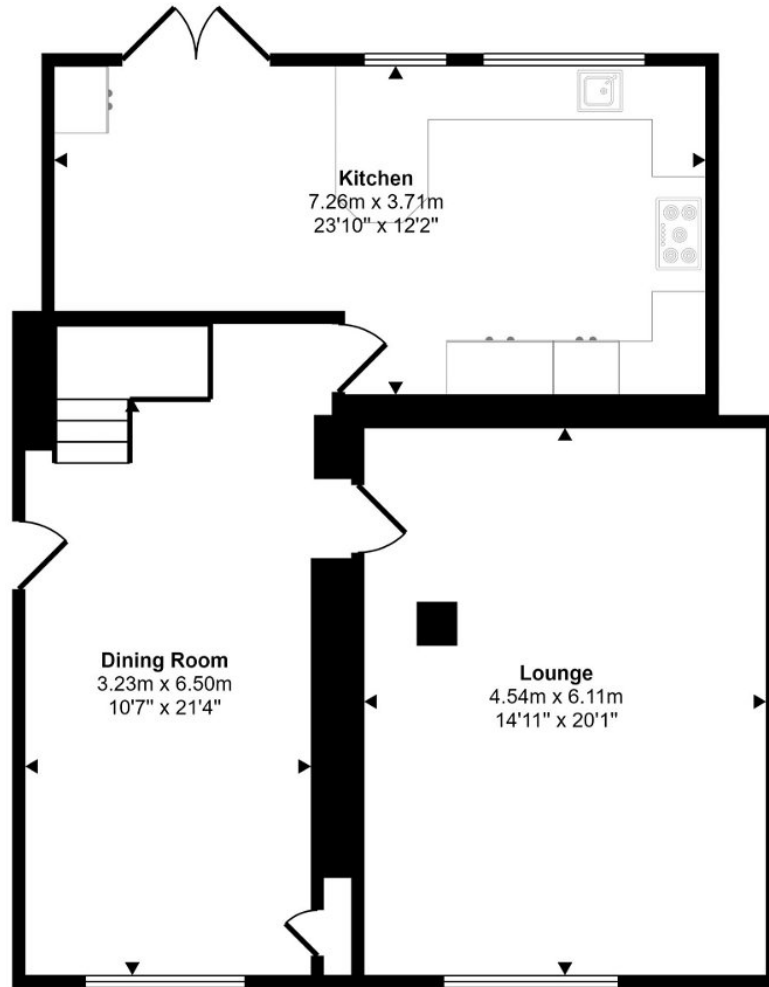


Externally

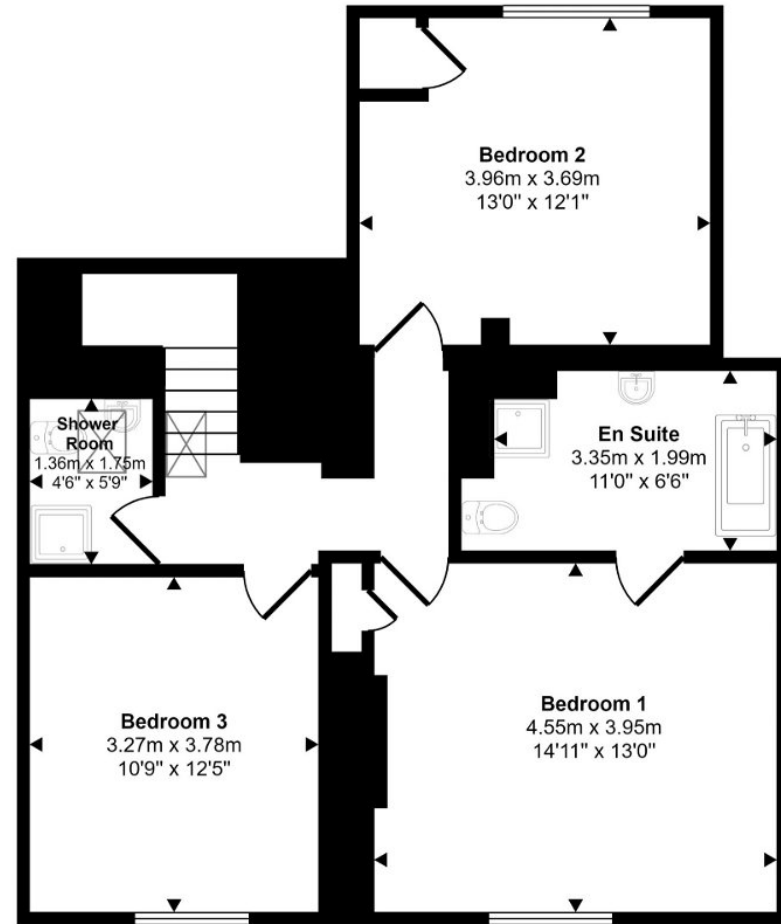
Outside there is convenient gravelled off-road parking, complete with an electric car charging point, catering to the needs of eco-conscious residents. The rear garden, professionally landscaped by Wilkinsons, showcases meticulous attention to detail, with a patio terrace perfect for alfresco dining and entertaining. Well-stocked borders burst with vibrant blooms, adding a splash of colour to the tranquil surroundings, while lush lawned areas provide ample space for outdoor recreation and relaxation.



Approx Gross Internal Area
153 sq m / 1642 sq ft



Ground Floor
Approx 81 sq m / 876 sq ft



First Floor
Approx 71 sq m / 765 sq ft

This floorplan is only for illustrative purposes and is not to scale. Measurements of rooms, doors, windows, and any items are approximate and no responsibility is taken for any error, omission or mis-statement. Icons of items such as bathroom suites are representations only and may not look like the real items. Made with Made Snappy 360.

📍 26-28 High Street, Stokesley, Middlesbrough, TS9 5DQ

✉ stokesley@harveybrooks.com

☎ (01642) 687 223

🌐 www.harveybrooks.com

