



Tanglewold, Seamer

Offers In Region Of £750,000



Here to help you move.

Tanglewold, Seamer

Contemporary and stylish family home | Gorgeous rural setting | Double garage | Stunning family kitchen.

About this property...

Tanglewold is an exquisite six-bedroom detached house that boasts a generous living space of over 3,500 square feet spread across three levels. This modern residence was meticulously constructed in 2022, employing high-end specifications to ensure a luxurious and comfortable living experience.

The ground floor features the convenience of underfloor heating, adding a touch of warmth and comfort to the living spaces. The contemporary design and finishes throughout the house contribute to a sleek and stylish aesthetic, creating an inviting atmosphere for its residents.

With six bedrooms the property is an ideal choice for a large family seeking a spacious and well-appointed home. The layout is thoughtfully designed to accommodate various lifestyle needs, providing ample room for both communal activities and private retreats. The overall design reflects a commitment to quality and attention to detail, making it a residence that requires no additional work upon moving in.

Ground floor

The ground floor exudes luxury and sophistication, beginning with a grand entrance hallway that captivates guests with its opulence. A majestic oak staircase, adorned with elegant glass inserts, takes centre stage, creating a striking focal point as it ascends to the upper levels.

In this grand entrance, fitted storage units seamlessly blend practicality with style, offering a convenient space to stow away belongings without compromising on aesthetics. The flooring, adorned with exquisite tiles, adds a touch of timeless elegance to the space.





As you step further, you encounter a living room that emanates warmth and modernity. The panelled chimney breast creates a cosy ambiance (fully functional), with a contemporary electric fire nestled within. Four windows, strategically positioned to provide a dual aspect, flood the room with an abundance of natural light, creating an inviting and airy atmosphere.

The heart of the home lies in the gorgeous dining family kitchen. This culinary haven boasts granite work surfaces that exude sophistication, complemented by two centre islands that serve as both functional workspaces and stylish focal points. Integral appliances, including two ovens, a microwave, dishwasher, and a wine cooler, cater to the needs of even the most discerning home chef.

Sliding doors seamlessly connect the indoor and outdoor spaces, leading to an enclosed outdoor area that serves as a perfect extension of the kitchen. This outdoor retreat offers a delightful space for al fresco dining or leisurely relaxation, further enhancing the lifestyle offered by this luxurious residence.

In addition to the main living spaces, the ground floor features practical amenities such as a utility room, a convenient WC, and a dedicated boot room. These spaces are thoughtfully designed to enhance the functionality of daily life while maintaining the overall aesthetic and comfort of the home.





First floor

The first floor offers a master bedroom with a dressing area and en-suite, providing a private retreat with luxurious touches. Bedroom two features a walk-in dressing area and en-suite for added convenience. Bedrooms three, four and five offer individual comfort and style. A well-appointed family bathroom caters to the needs of the entire household. Throughout, the design reflects sophistication, with attention to detail and high-quality finishes. This first floor creates a harmonious blend of comfort and refinement.

Second floor

The second floor of this residence is tailored for comfort and convenience, serving as an ideal space for guests or teens. A well-appointed bedroom welcomes occupants with a walk-in wardrobe/dressing area, providing ample storage and a touch of luxury. The adjoining shower room ensures privacy and functionality, making this floor a self-contained retreat. Thoughtfully designed for the comfort of guests or teenagers, the second floor embodies a harmonious blend of style and practicality. There is also loft space providing extra storage space.

Externally

Externally, the property is surrounded by manicured lawned gardens on the side, front, and rear, providing a verdant and inviting outdoor space. An extensive driveway caters to ample parking for numerous vehicles, ensuring convenience for residents and guests alike. The property features a double garage, offering additional parking or storage space.

Enhancing privacy and security, a gated entrance provides controlled access to the premises. The front of the property offers picturesque views of open countryside, with the Cleveland Hills in the distance, adding a scenic and tranquil backdrop to the residence. This combination of well-maintained outdoor spaces, ample parking, and scenic views contributes to the overall appeal and desirability of the property.





General information

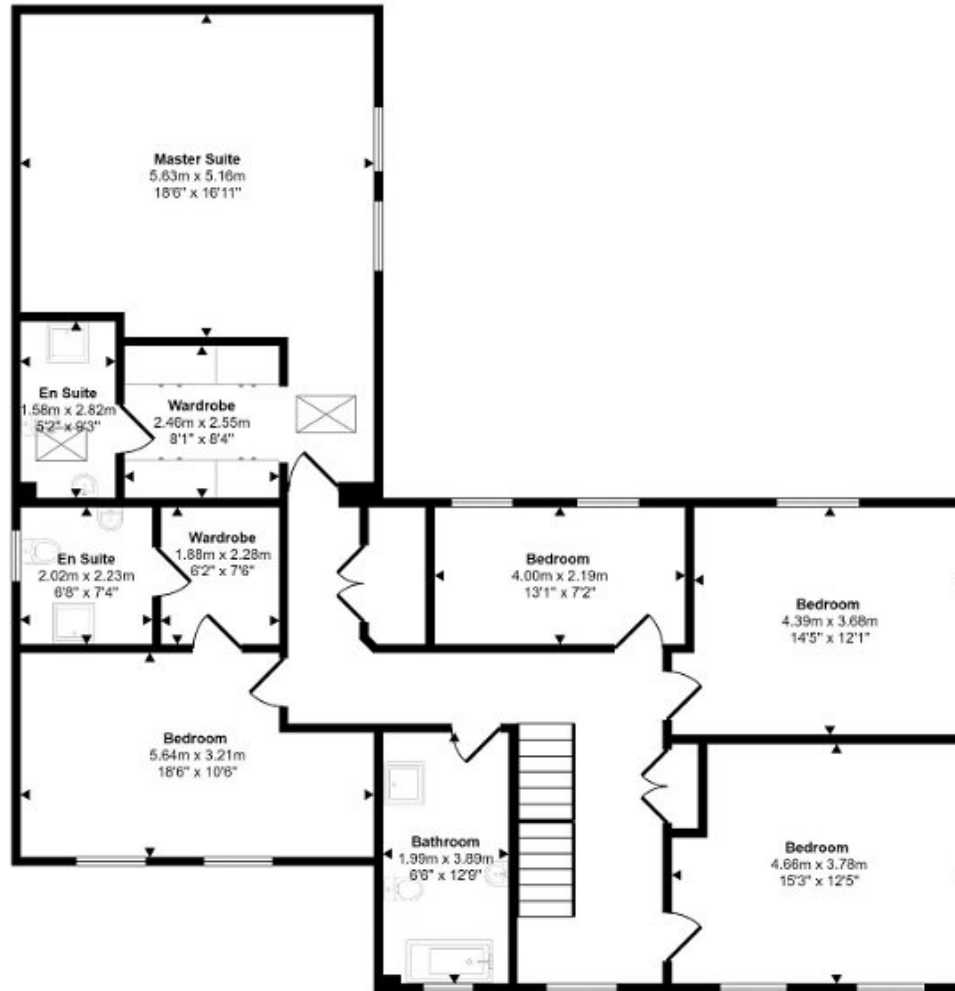
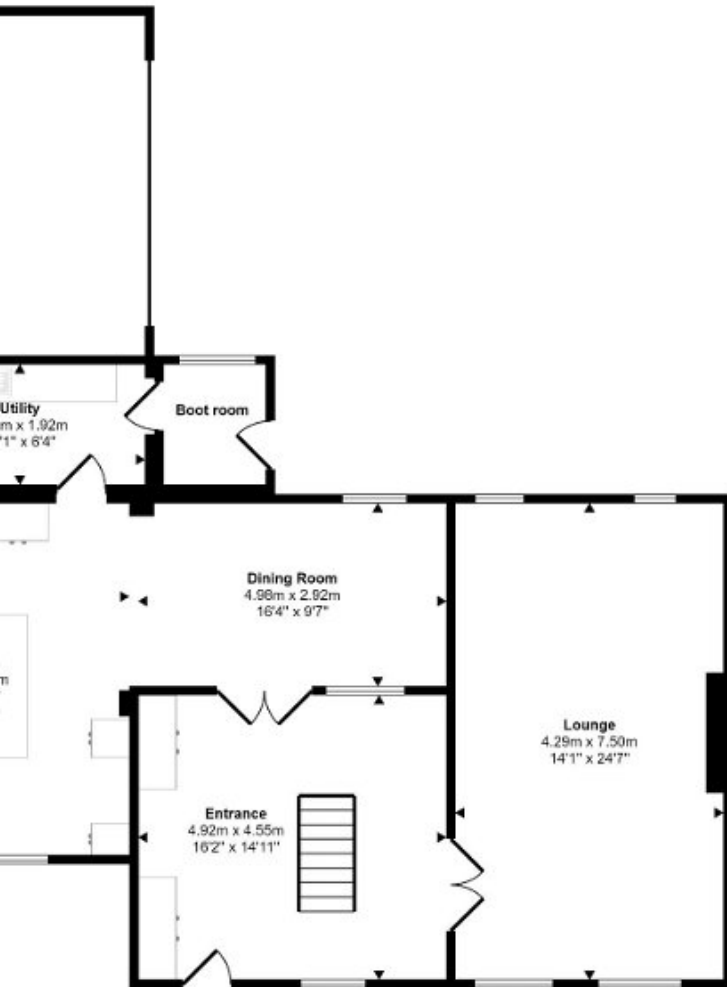
Billing authority: Hambleton

Council tax band: G.

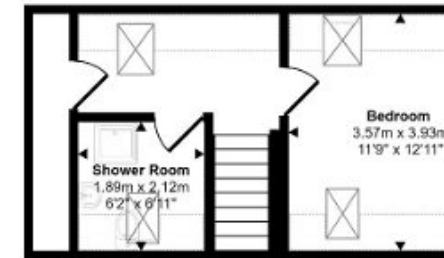
Tenure: Freehold.



Approx Gross Internal Area
334 sq m / 3599 sq ft



First Floor
Approx 147 sq m / 1587 sq ft



Second Floor
Approx 37 sq m / 402 sq ft

This floorplan is only for illustrative purposes and is not to scale. Measurements of rooms, doors, windows, and any items are approximate and no responsibility is taken for any error, omission or mis-statement. Icons of items such as bathroom suites are representations only and may not look like the real items. Made with Made Snappy 360.

📍 26-28 High Street, Stokesley, Middlesbrough, TS9 5DQ

✉ stokesley@harveybrooks.com

☎ (01642) 687 223

🌐 www.harveybrooks.com

