




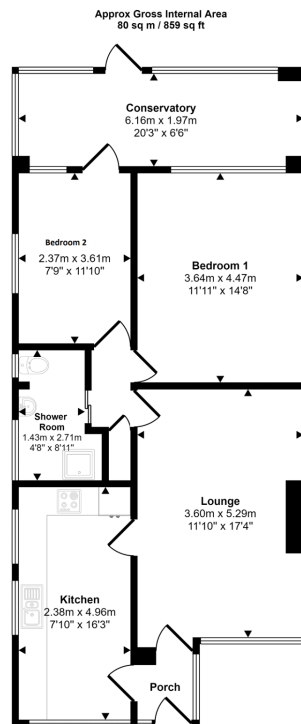
Meadowfield, Stokesley

£230,000

 2  1  1



- Two bedroom detached bungalow with no onward chain.
- Extensive driveway leading to a detached single garage.
- 'Worcester' combi boiler under 5 years old.
- Situated within level walking distance of Stokesley High Street.
- Westerly facing garden to the rear.
- Full width conservatory to the rear.
-
-



Floorplan

This floorplan is only for illustrative purposes and is not to scale. Measurements of rooms, doors, windows, and any items are approximate and no responsibility is taken for any error, omission or mis-statement. Icons of items such as bathroom suites are representations only and may not look like the real items. Made with Made Snappy 360.

No onward chain | Walking distance to High Street | Detached single garage.

