



HILTONS ESTATES

Fowler Way  
, Uxbridge, UB10 0FQ

- Modern 1-bed apartment on the 3rd floor
- Allocated parking included
- Bright open-plan kitchen/living area
- Double bedroom with built-in storage

**Offers In Region Of £279,950**

EPC Rating '85'







## Property Description

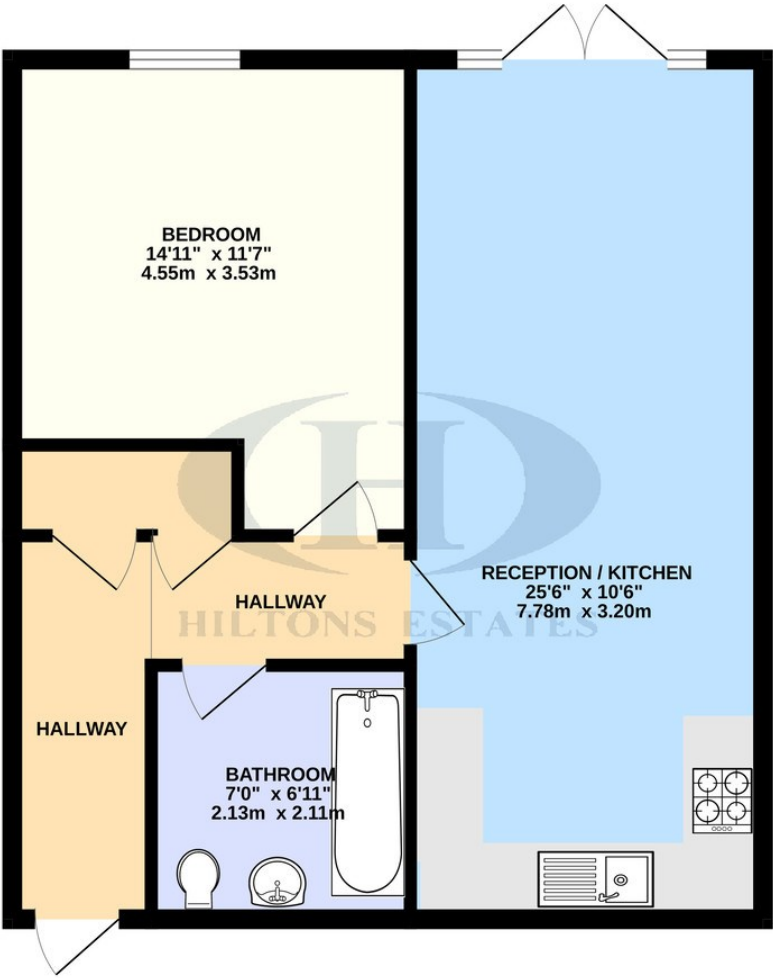
Situated on the third floor of a modern development, this bright and spacious 1-bedroom apartment offers stylish living in the heart of Uxbridge.

The property features an open plan living and kitchen area with integrated appliances, a generously sized double bedroom with built-in wardrobes, and a sleek, contemporary bathroom. Large windows allow for plenty of natural light, creating a warm and welcoming atmosphere throughout.

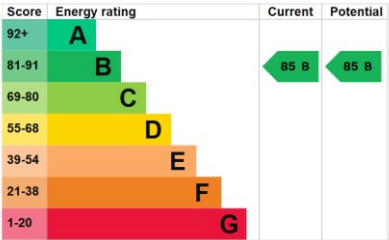
The building offers secure entry, allocated parking and lift access, and you'll be just minutes from Uxbridge Underground Station, Intu shopping centre, restaurants, and all local amenities. Ideal for professionals or couples seeking a well-connected and comfortable home in a vibrant location.

Call NOW for further details, viewings highly recommended, not to be missed.

GROUND FLOOR  
571 sq.ft. (53.0 sq.m.) approx.



TOTAL FLOOR AREA : 571 sq.ft. (53.0 sq.m.) approx.  
 Whilst every attempt has been made to ensure the accuracy of the floorplan contained here, measurements of doors, windows, rooms and any other items are approximate and no responsibility is taken for any error, omission or mis-statement. This plan is for illustrative purposes only and should be used as such by any prospective purchaser. The services, systems and appliances shown have not been tested and no guarantee as to their operability or efficiency can be given.  
 Made with MetroPix ©2025



243 The Broadway  
 Southall  
 Middlesex  
 UB1 1NF

[www.hiltons-estates.com](http://www.hiltons-estates.com)  
[Rajneev@hiltons-estates.com](mailto:Rajneev@hiltons-estates.com)  
 02085 741 999

Agents Note: Whilst every care has been taken to prepare these sales particulars, they are for guidance purposes only. All measurements are approximate are for general guidance purposes only and whilst every care has been taken to ensure their accuracy, they should not be relied upon and potential buyers are advised to recheck the measurements