



**HILTONS ESTATES**

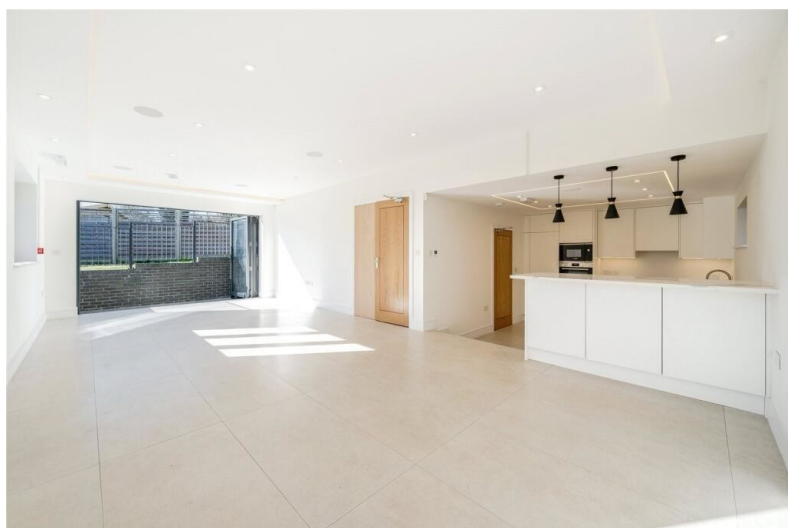
**Phoenix Close**

, Gerrards Cross, SL9 7AU

- **European Elegance:** A uniquely designed luxury home with high-end finishes.
- **Spacious & Stylish:** Four bedrooms, including a lavish principal suite with en-suite.
- **Modern Living:** Open-plan Bosch kitchen, utility room, and smart home features.
- **Outdoor Perfection:** Landscaped garden with a large patio for entertaining.

**Offers Over £1,020,000**

EPC Rating '86'







## Property Description

### Luxury European-Inspired Home in Gerrards Cross

This stunning new-build blends European elegance with modern design, offering a unique and sophisticated living experience. Originally a show home, it showcases premium designer furnishings and high-end finishes throughout.

The spacious layout features four stylish bedrooms, including a lavish principal suite with a walk-in wardrobe and en-suite. The open-plan living area flows seamlessly into a state-of-the-art Bosch kitchen, complete with a utility room. Smart home technology, including built-in Bluetooth speakers, enhances modern convenience.

Outside, a beautifully landscaped garden with a generous patio is perfect for entertaining, while a paved driveway offers ample parking. Ideally located near top schools, boutique shops, and excellent transport links-just minutes from Gerrards Cross station for direct access to London. Experience unparalleled style and comfort-schedule your viewing today!



Score	Energy rating	Current	Potential
92+	A		92 A
81-91	B	86 B	
69-80	C		
55-68	D		
39-54	E		
21-38	F		
1-20	G		

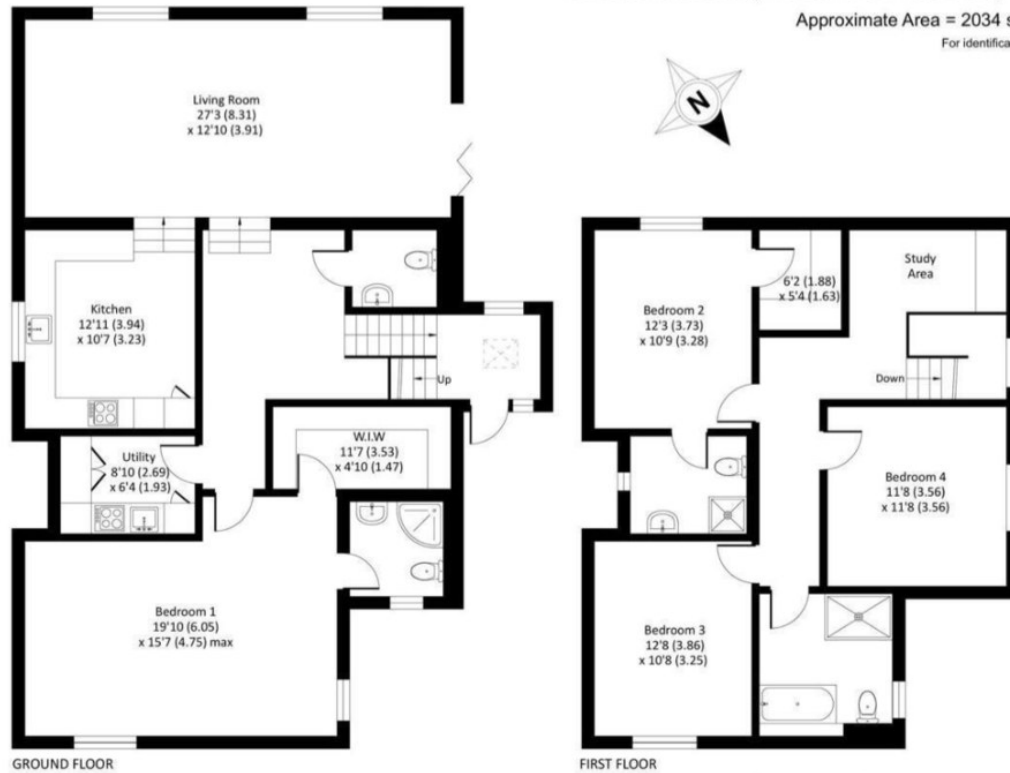




## Oxford Road, Gerrards Cross, SL9 7AT

Approximate Area = 2034 sq ft / 189 sq m

For identification only - Not to scale



243 The Broadway  
Southall  
Middlesex  
UB1 1NF

[www.hiltons-estates.com](http://www.hiltons-estates.com)  
[Rajneev@hiltons-estates.com](mailto:Rajneev@hiltons-estates.com)  
02085 741 999

Agents Note: Whilst every care has been taken to prepare these sales particulars, they are for guidance purposes only. All measurements are approximate and are for general guidance purposes only and whilst every care has been taken to ensure their accuracy, they should not be relied upon and potential buyers are advised to recheck the measurements.