




Burket Close | Southall | UB2 5NU

£220,000

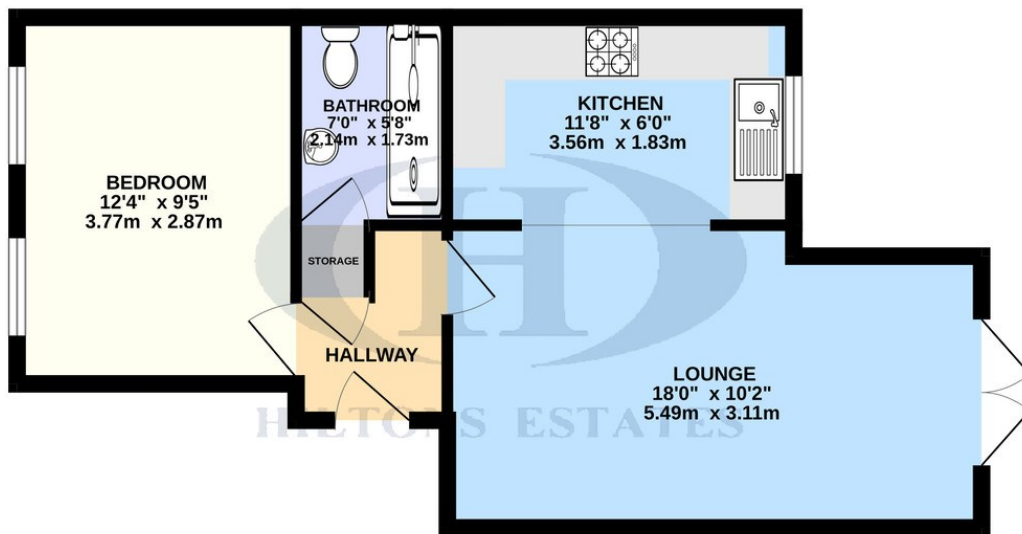
 Modern 1-Bedroom Apartment in Southall UB2 – Ideal for First-Time Buyers & Investors!

Located in the sought-after Burket Close, Southall UB2, on the borders of Norwood Green, this well-presented apartment offers a spacious double bedroom, a modern three-piece bathroom suite, and an inviting open-plan kitchen, dining, and living area-perfect for contemporary living. Patio doors from the lounge lead to a communal garden, providing a lovely outdoor space to relax. With a long 189-year lease, the property benefits from a service charge of £2,400 per annum and ground rent of £270 per annum. Enjoy easy access to Southall Crossrail, Southall Broadway, King Street, and local places of worship, making it a prime location for commuters and families alike. A fantastic investment opportunity, this property boasts an estimated rental income of £1,450 pcm (7.91% yield).

 Call NOW to arrange a viewing!



GROUND FLOOR 445 sq.ft. (41.3 sq.m.) approx.



TOTAL FLOOR AREA : 445 sq.ft. (41.3 sq.m.) approx.

Whilst every attempt has been made to ensure the accuracy of the floorplan contained here, measurements of doors, windows, rooms and any other items are approximate and no responsibility is taken for any error, omission or mis-statement. This plan is for illustrative purposes only and should be used as such by any prospective purchaser. The services, systems and appliances shown have not been tested and no guarantee as to their operability or efficiency can be given.

Made with Metropix ©2025

Contact Details

243 The Broadway

Southall

Middlesex

UB1 1NF

www.hiltons-estates.com

Rajneev@hiltons-estates.com

02085741999

Score	Energy rating	Current	Potential
92+	A		
81-91	B		
69-80	C		77 C
55-68	D	58 D	
39-54	E		
21-38	F		
1-20	G		

Agents Note: Whilst every care has been taken to prepare these sales particulars, they are for guidance purposes only. All measurements are approximate are for general guidance purposes only and whilst every care has been taken to ensure their accuracy, they should not be relied upon and potential buyers are advised to recheck the measurements