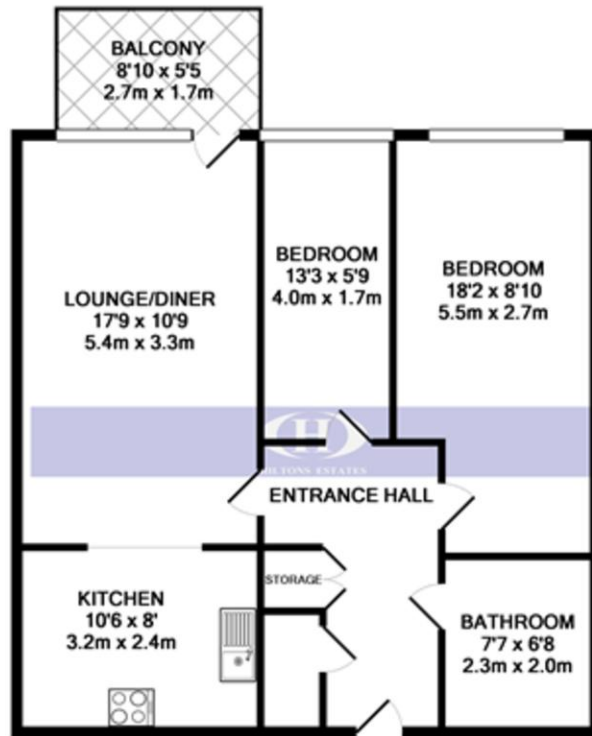


Salisbury Road | Southall | UB2 5QF

£335,000

Hiltons is proud to present this Stunning 2 bedroom flat on the second floor with lift access and a very Long Lease of 995 years!!!. Close to local amenities and transport links it offers comfort in a central location. The good sized kitchen leads to a spacious living room and a balcony. The property comes with 2 double bedrooms and a secure gated allocated parking space!!! There is access to a rooftop garden and communal gardens!!! This property is a Brilliant Opportunity for First-time Buyers, Commuters and INVESTORS!! Book your viewings now!!



TOTAL APPROX. FLOOR AREA 642 SQ.FT. (59.7 SQ.M.)

Whilst every attempt has been made to ensure the accuracy of the floor plan contained here, measurements of doors, windows, rooms and any other items are approximate and no responsibility is taken for any error, omission, or mis-statement. This plan is for illustrative purposes only and should be used as such by any prospective purchaser. The services, systems and appliances shown have not been tested and no guarantee as to their operability or efficiency can be given
Made with Metropix ©2019

Contact Details

243 The Broadway

Southall

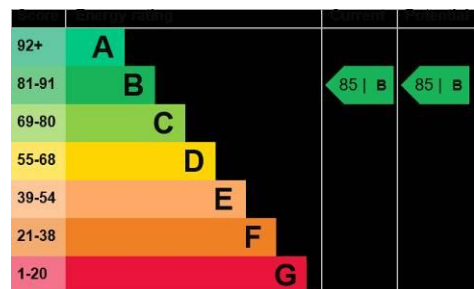
Middlesex

UB1 1NF

www.hiltons-estates.com

Rajneev@hiltons-estates.com

02085741999



Agents Note: Whilst every care has been taken to prepare these sales particulars, they are for guidance purposes only. All measurements are approximate and are for general guidance purposes only and whilst every care has been taken to ensure their accuracy, they should not be relied upon and potential buyers are advised to recheck the measurements