



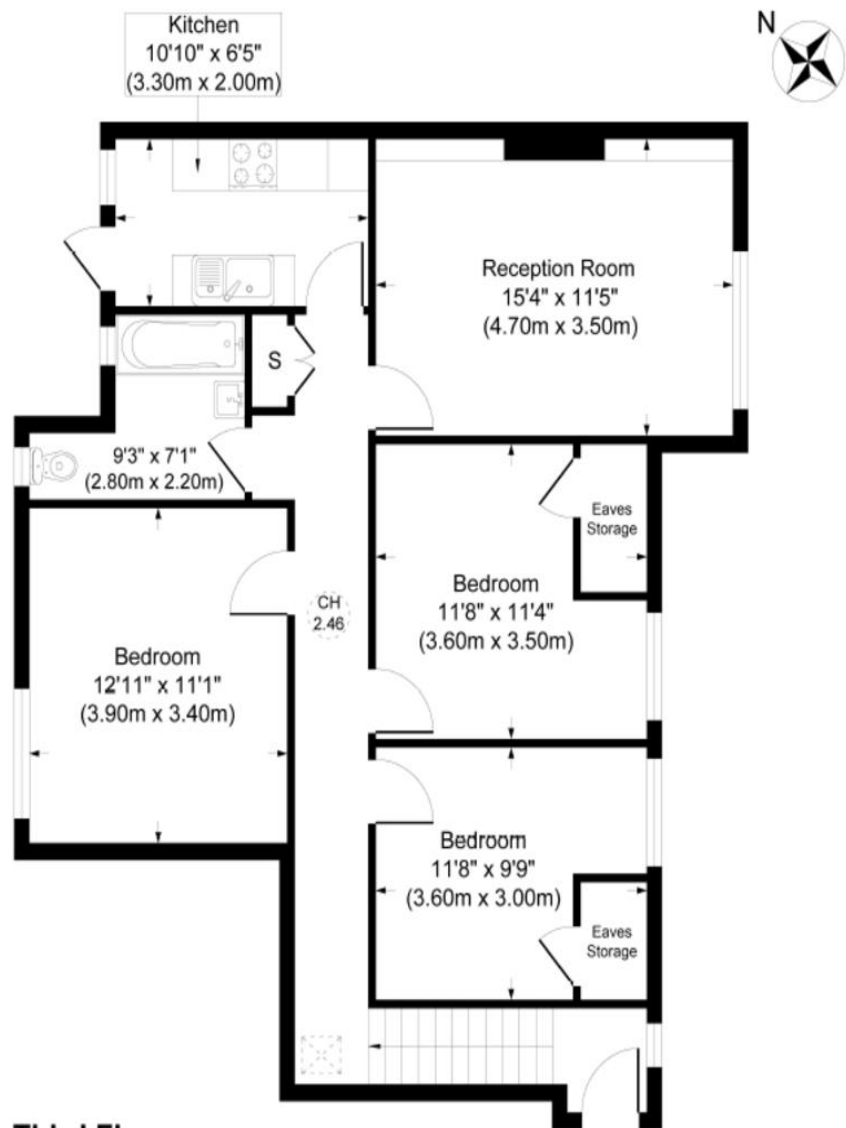
Great West Road | Isleworth | TW7 4PY

£420,000

Hiltons are pleased to present a lovely three bedroom apartment within a ideally located property in the sought after area of Isleworth, TW7! The property comprises a spacious hallway, three well sized bedrooms, large living room, kitchen and family bathroom. There is private parking available with residents first come first serve parking, double glazing, and communal gardens. Local shops and amenities are close by. Within easy reach is West Middlesex Hospital, Hounslow and Osterley Underground and West Thames College. A Brilliant Opportunity for Commuters, First-Time Buyers and Investors!!! Viewings Highly Recommended!! Call us NOW to BOOK! Not to be missed!



Osterley Ct, Great West Rd, Isleworth TW7 4PY



Third Floor

Approx. Gross Internal Floor Area 863.79 sq. ft / 80.24 sq. m

Illustration for identification purposes only, measurements are approximate, not to scale

Produced by www.Rahuljora.co.uk

Contact Details

243 The Broadway

Southall

Middlesex

UB1 1NF

www.hiltons-estates.com

Rajneev@hiltons-estates.com

02085741999

Agents Note: Whilst every care has been taken to prepare these sales particulars, they are for guidance purposes only. All measurements are approximate and are for general guidance purposes only and whilst every care has been taken to ensure their accuracy, they should not be relied upon and potential buyers are advised to recheck the measurements