

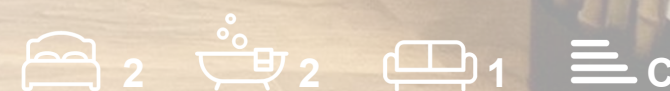


RESIDE
STOCKPORT



Castlewood Wellington Road North
Stockport, SK4 2DZ

Asking Price £249,950



Castlewood Wellington Road North

Stockport, SK4 2DZ

The Castlewood Development is an elegant residential development featuring 40 thoughtfully designed one and two-bedroom apartments, ideally situated in the leafy South Manchester suburb of the Heaton.

Each apartment is meticulously crafted to a high standard, boasting premium features such as warm honey oak LVT flooring, bespoke dust grey kitchens with sophisticated white Levant countertops, rain head showers in primary bathrooms, and Porcelanosa ceramic tiling throughout. Expansive windows enhance natural light, creating bright and inviting living spaces.

The location offers exceptional convenience for commuters, with the M60 motorway just half a mile away and easy access to both Heaton Chapel and Stockport train stations, all within walking distance.

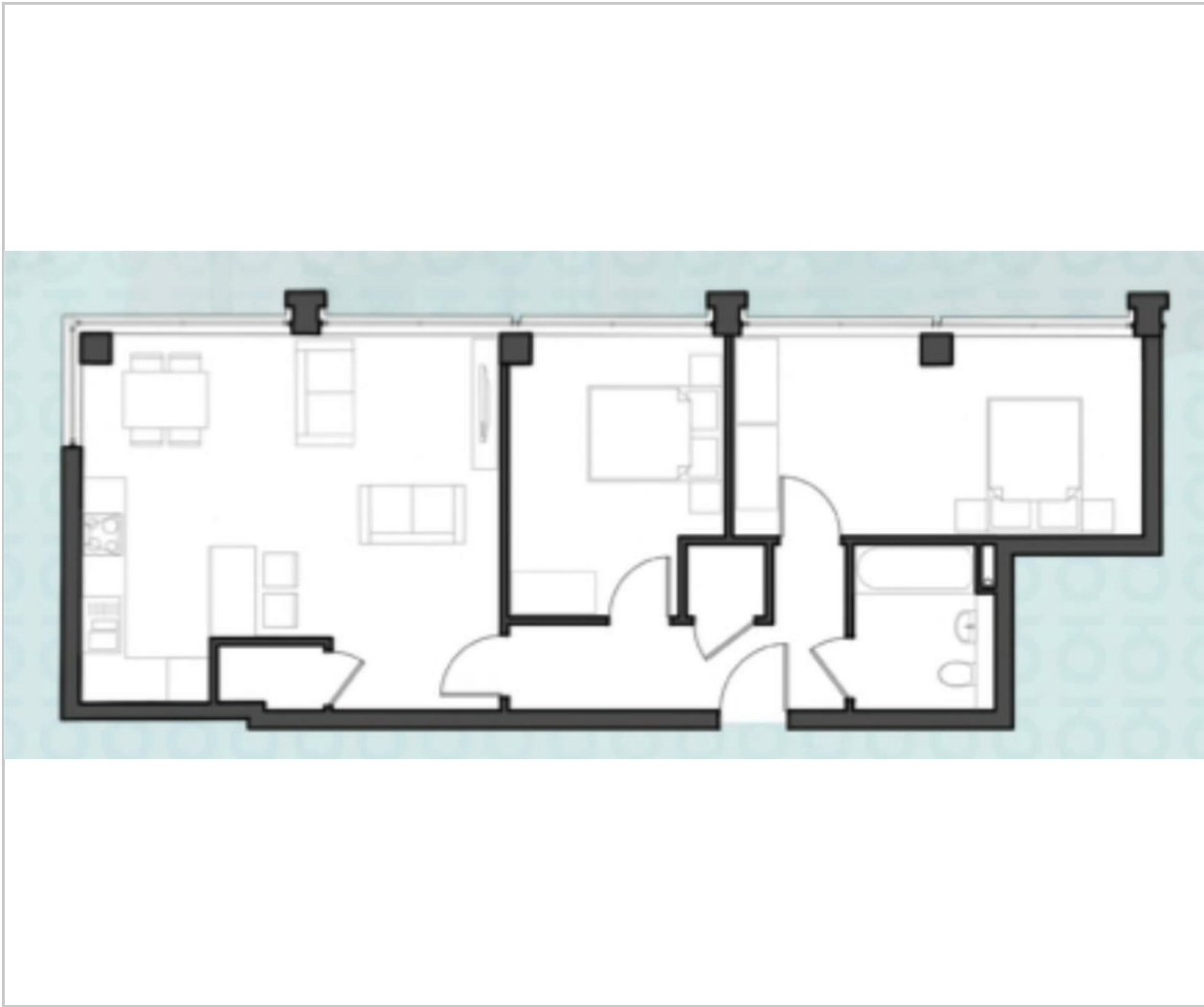
The apartment is currently tenanted until August.

- Finished To high Standard
- Two Double Bedrooms
- Open Plan Living
- Kitchen/Diner
- Spacious Apartment
- LVT Flooring
- Council Tax Band - C
- EPC Rating - C





Floor Plan

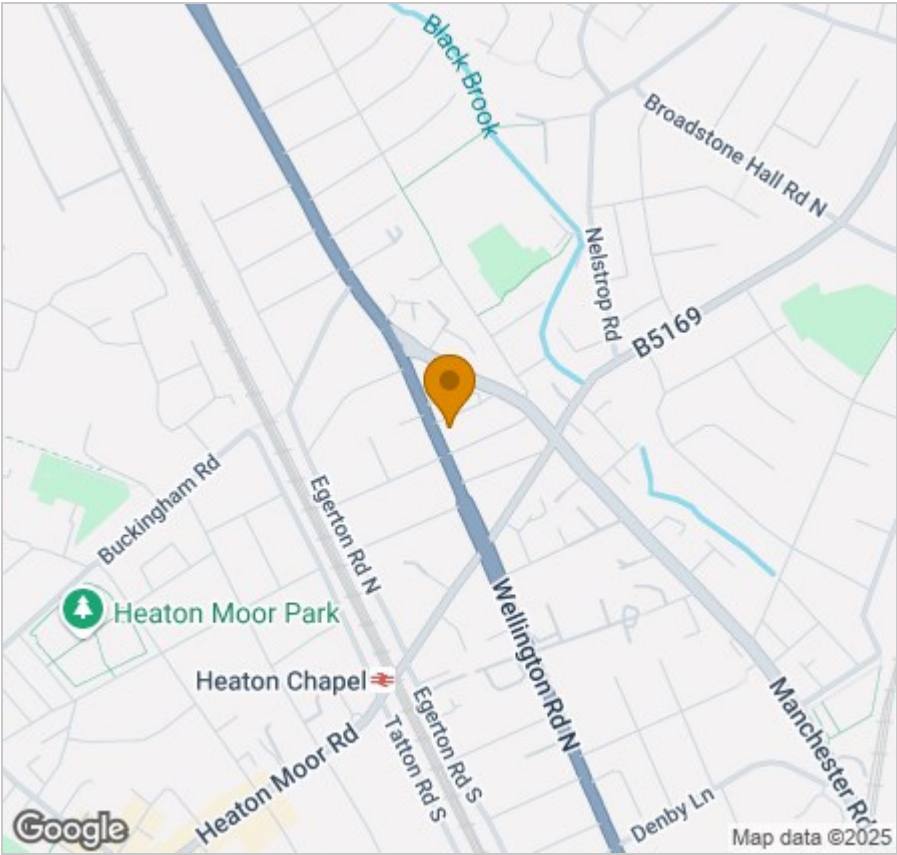


Viewing

Please contact our Reside Stockport Office on 0161 808 0660 if you wish to arrange a viewing appointment for this property or require further information.

These particulars, whilst believed to be accurate are set out as a general outline only for guidance and do not constitute any part of an offer or contract. Intending purchasers should not rely on them as statements of representation of fact, but must satisfy themselves by inspection or otherwise as to their accuracy. No person in this firms employment has the authority to make or give any representation or warranty in respect of the property.

Area Map



Energy Efficiency Graph

