



RESIDE
STOCKPORT



Apt 50 Victoria Mill Houldsworth Street
Reddish, Stockport, SK5 6AR

Guide Price £169,950



Apt 50 Victoria Mill Houldsworth Reddish, Stockport, SK5 6AR

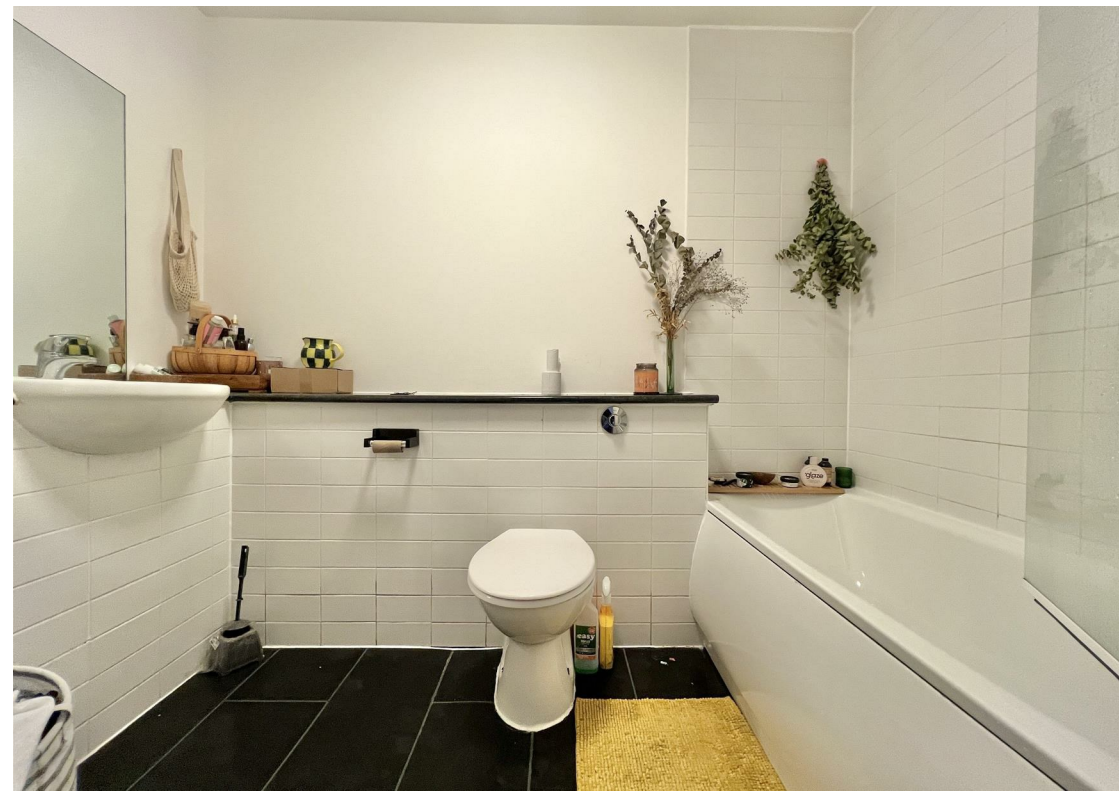
Stockport Reside is delighted to present this well-presented, END OF CHAIN two double bedroom apartment in the popular converted Victoria Mill in Reddish. Ideally located close to excellent local amenities and transport links, this first-floor apartment offers both charm and spaciousness and comes with a PARKING SPACE.

The property features a welcoming entrance hall, two generously sized bedrooms, with the bedroom 1 benefiting from an en-suite bathroom. The open-plan lounge/dinning area that is bathed in natural light, a fitted kitchen, and a further bathroom.

Victoria Mill benefits from beautifully maintained communal gardens, remote entry access, and a concierge service.

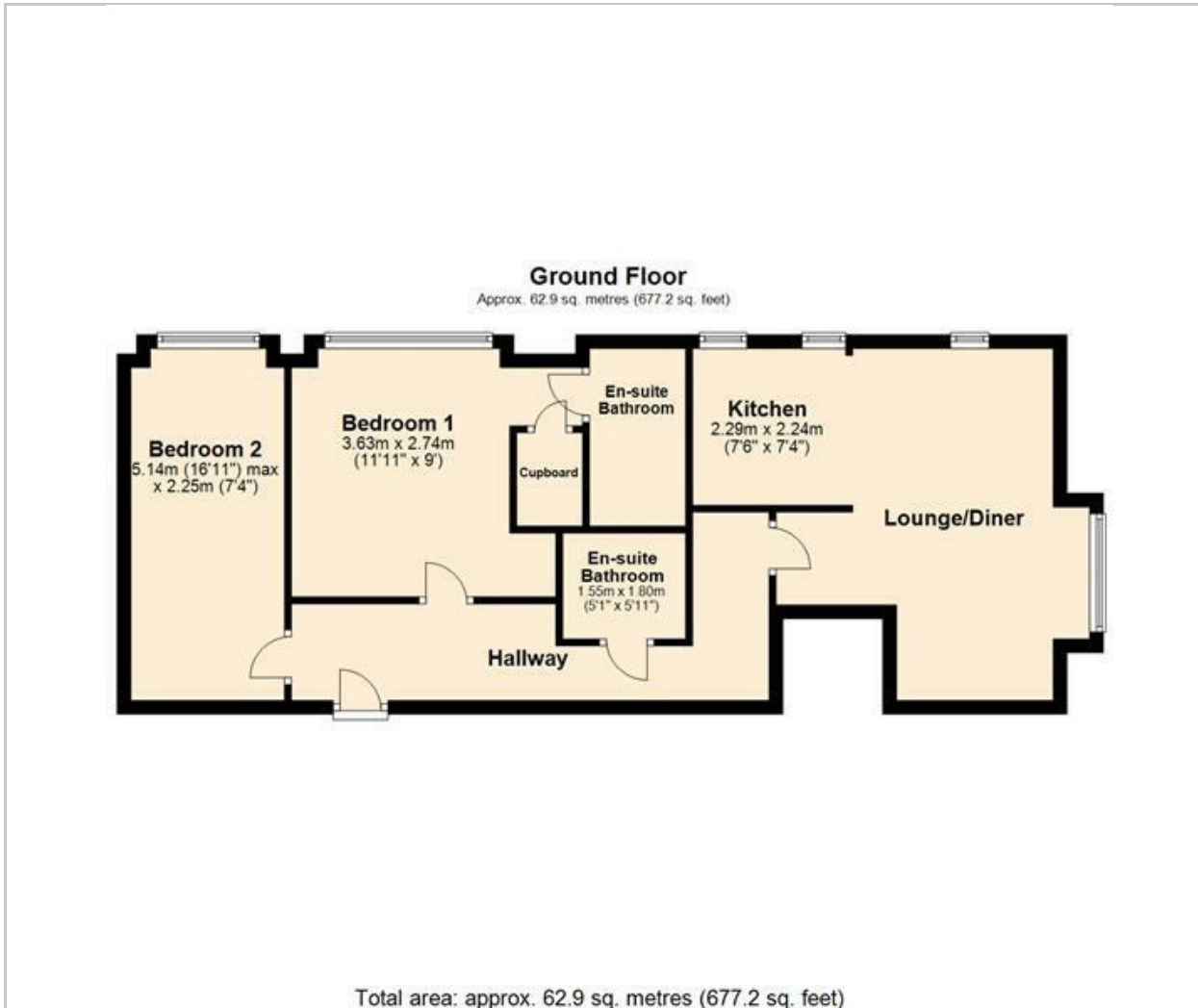
The current tenants will be moving out in July and the property will be sold as vacant possession.

- Completed Development
- Mill Conversion
- Two Bed Apartment
- Beautiful Exposed Brickwork
- Two Bathroom
- Open Plan Living
- EPC Rating E
- One Parking Space
- Concierge Service
- End of Chain





Floor Plan



Viewing

Please contact our Reside Stockport Office on 0161 808 0660 if you wish to arrange a viewing appointment for this property or require further information.

These particulars, whilst believed to be accurate are set out as a general outline only for guidance and do not constitute any part of an offer or contract. Intending purchasers should not rely on them as statements of representation of fact, but must satisfy themselves by inspection or otherwise as to their accuracy. No person in this firm's employment has the authority to make or give any representation or warranty in respect of the property.

57a St Petersgate, Stockport, Cheshire, SK1 1DH

Tel: 0161 808 0660 Email: info@residestockport.com www.residestockport.com

Area Map



Energy Efficiency Graph

