



RESIDE
STOCKPORT

Victoria Mill Houldsworth Street

Reddish, Stockport, SK5 6AR

Guide Price £110,000

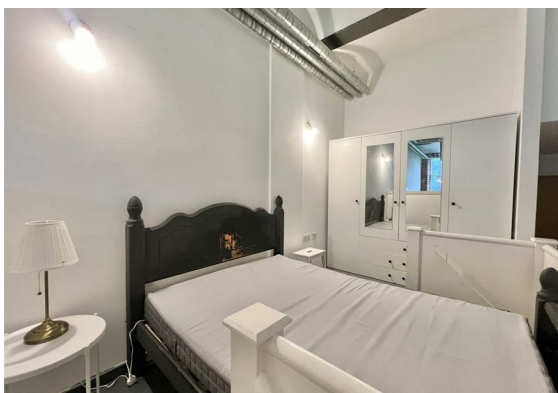
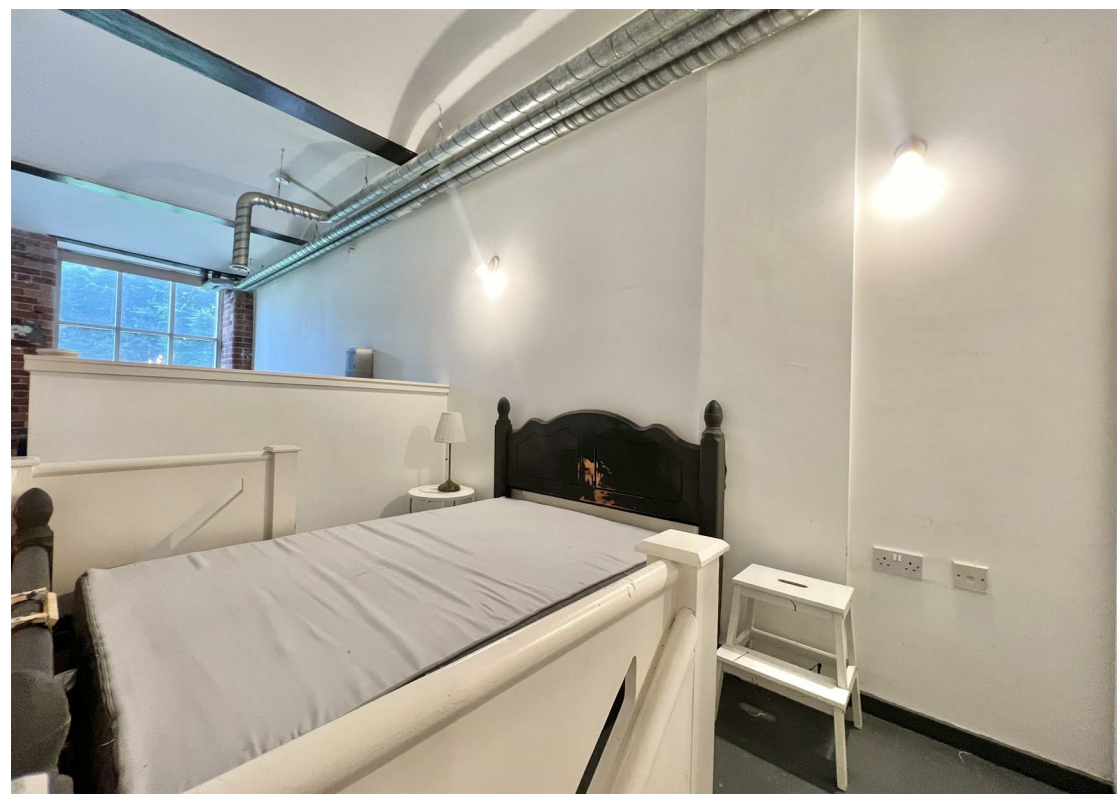


Victoria Mill Houldsworth Street
Reddish, Stockport, SK5 6AR

Reside are excited to offer this **UNIQUE** ground floor apartment in the sought after South Reddish Victoria Mill Development that benefits from a concierge service!

Perfect for first time buyers or BTL investors, this **END OF CHAIN** one double bedroom apartment is conveniently located within close proximity of some fantastic local amenities and transport links!

This well-presented open plan styled apartment boasts a n array o f character and features a stunning wooden floor throughout apart from the shower room. In brief the apartment comprises;

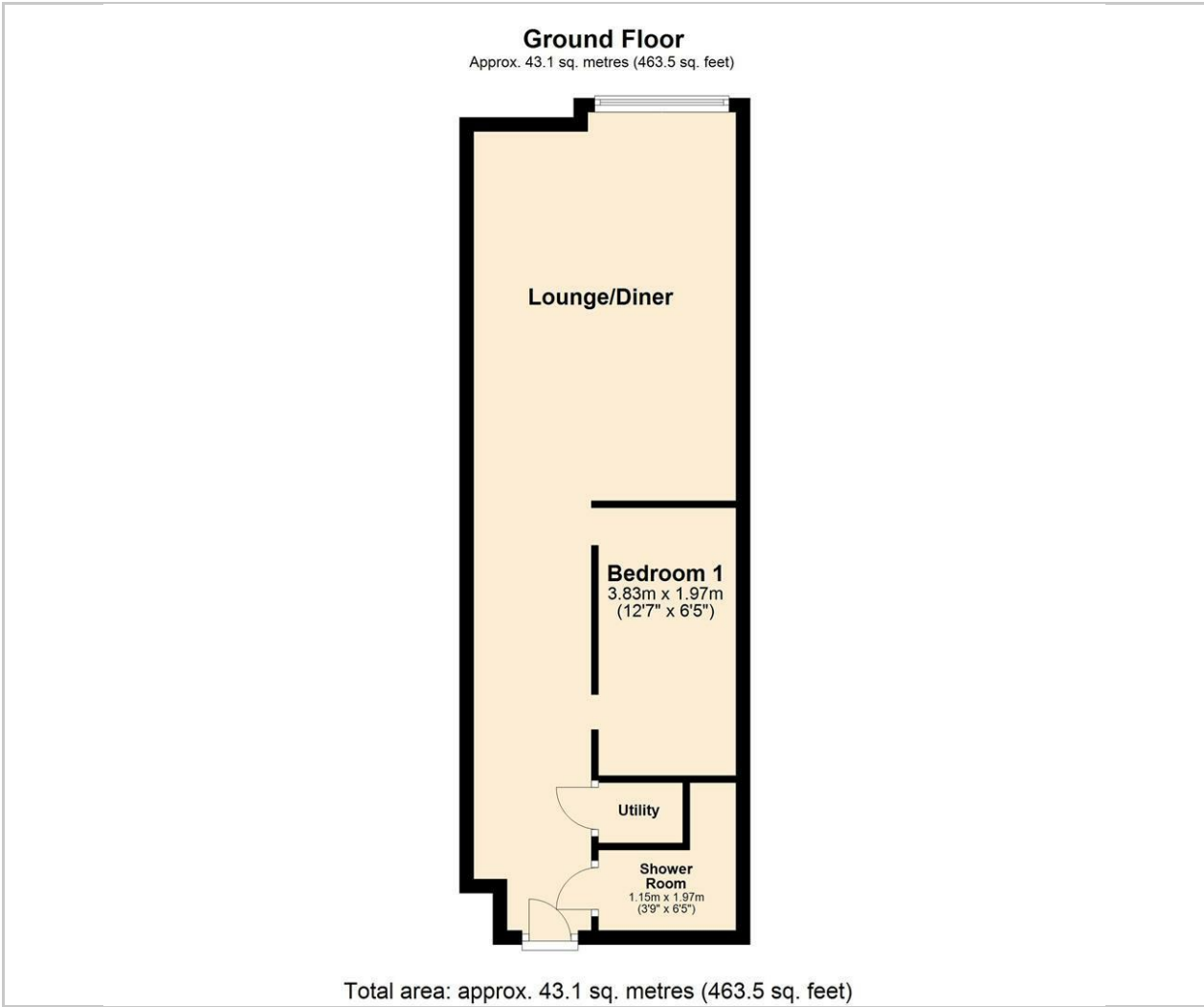




welcoming entrance
hallway, bedroom
with wall lights,
o p e n p l a n
lounge/kitchen and
a shower room.

- Completed Development
- Mill Conversion
- 1 Bed Apartment
- Beautiful Exposed Brickwork
- High Ceilings
- Open Plan Living
- EPC Rating C
- Viewings Available
- Concierge Service
- End Of Chain

Floor Plan

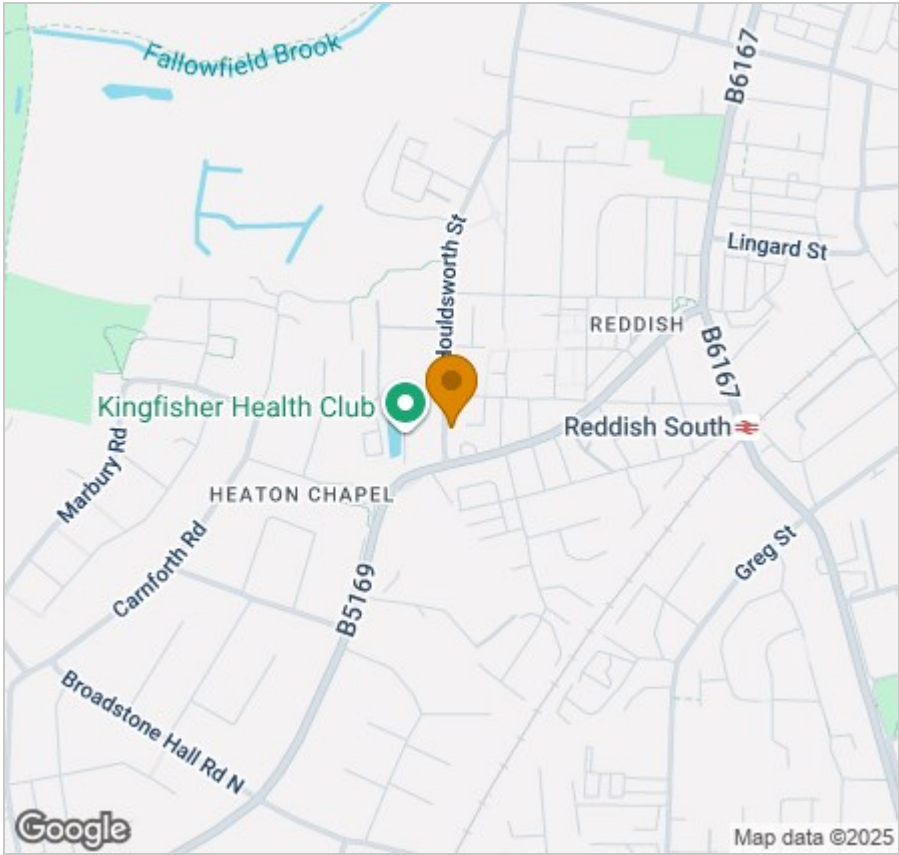


Viewing

Please contact our Reside Stockport Office on 0161 808 0660 if you wish to arrange a viewing appointment for this property or require further information.

These particulars, whilst believed to be accurate are set out as a general outline only for guidance and do not constitute any part of an offer or contract. Intending purchasers should not rely on them as statements of representation of fact, but must satisfy themselves by inspection or otherwise as to their accuracy. No person in this firms employment has the authority to make or give any representation or warranty in respect of the property.

Area Map



Energy Efficiency Graph

