



RESIDE

STOCKPORT



Victoria Mill Houldsworth Street
Reddish, Stockport, SK5 6AR

Guide Price £130,000



Victoria Mill Houldsworth Street

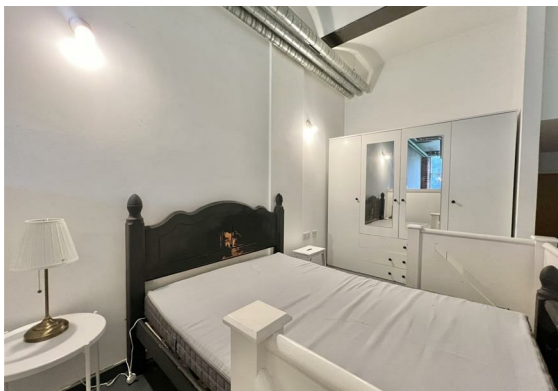
Reddish, Stockport, SK5 6AR

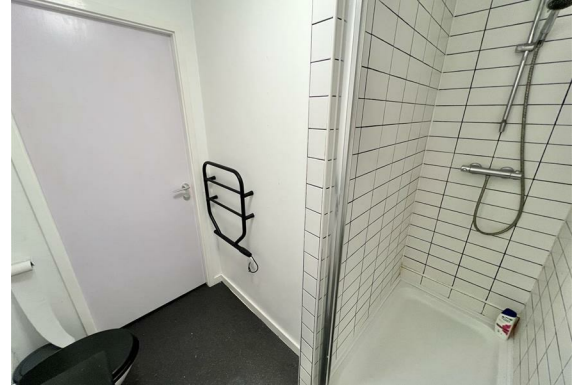
Reside are excited to offer this UNIQUE ground floor apartment in the sought after South Reddish Victoria Mill Development that benefits from a concierge service!

Perfect for first time buyers or BTL investors, this END OF CHAIN one double bedroom apartment is conveniently located within close proximity of some fantastic local amenities and transport links!

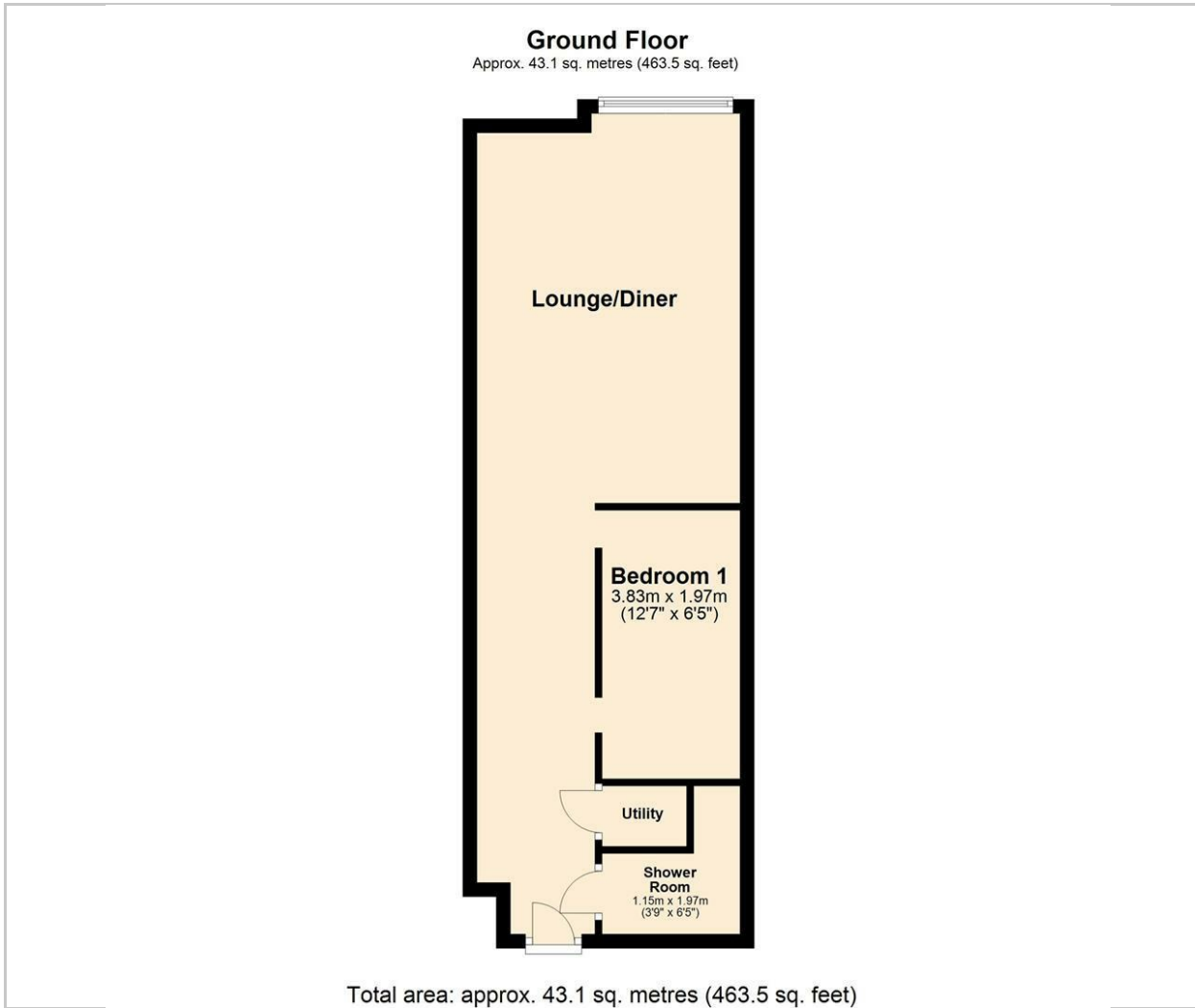
This well-presented open plan styled apartment boasts an array of character and features a stunning wooden floor throughout apart from the shower room. In brief the apartment comprises; welcoming entrance hallway, bedroom with wall lights, open plan lounge/kitchen and a shower room.

- Completed Development
- Mill Conversion
- 1 Bed Apartment
- Beautiful Exposed Brickwork
- High Ceilings
- Open Plan Living
- EPC Rating C
- Viewings Available
- Concierge Service
- End Of Chain





Floor Plan



Viewing

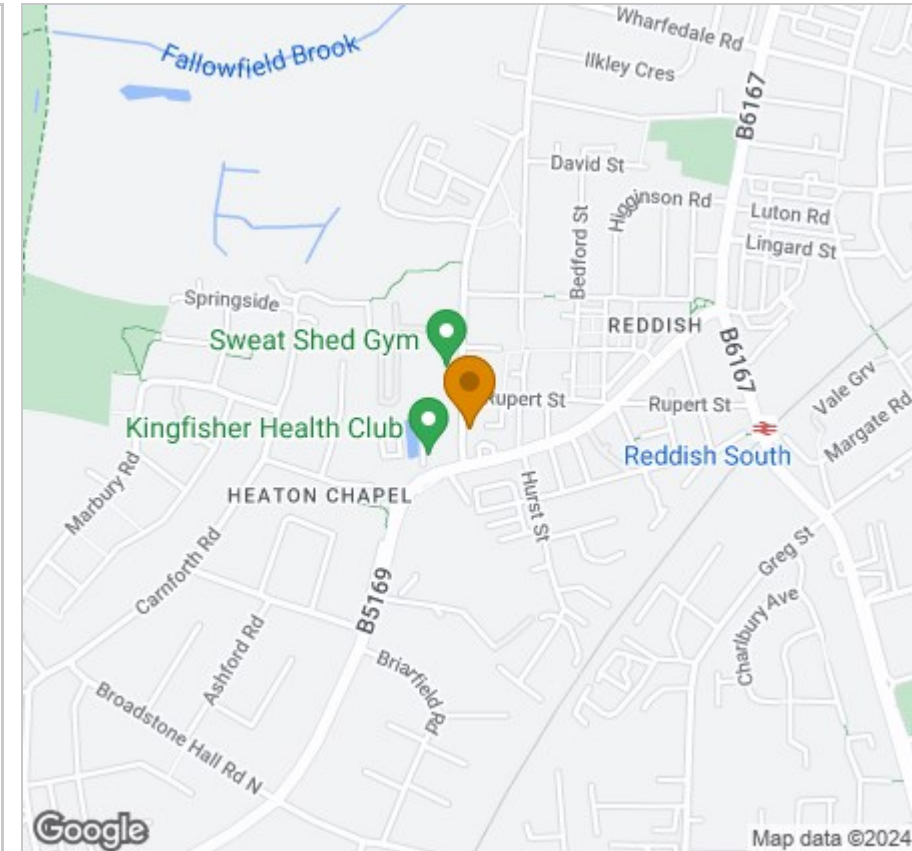
Please contact our Reside Stockport Office on 0161 808 0660 if you wish to arrange a viewing appointment for this property or require further information.

These particulars, whilst believed to be accurate are set out as a general outline only for guidance and do not constitute any part of an offer or contract. Intending purchasers should not rely on them as statements of representation of fact, but must satisfy themselves by inspection or otherwise as to their accuracy. No person in this firm's employment has the authority to make or give any representation or warranty in respect of the property.

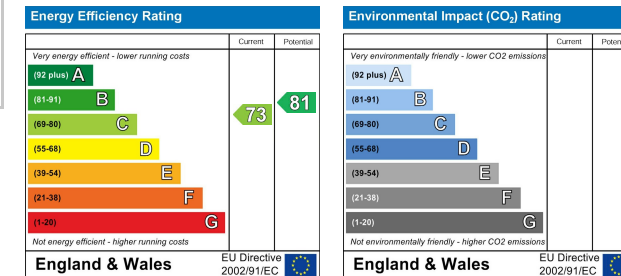
57a St Petersgate, Stockport, Cheshire, SK1 1DH

Tel: 0161 808 0660 Email: info@residestockport.com www.residestockport.com

Area Map



Energy Efficiency Graph



57a St Petersgate, Stockport, Cheshire, SK1 1DH

Tel: 0161 808 0660 Email: info@residestockport.com www.residestockport.com