



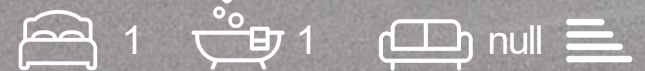
# RESIDE

STOCKPORT



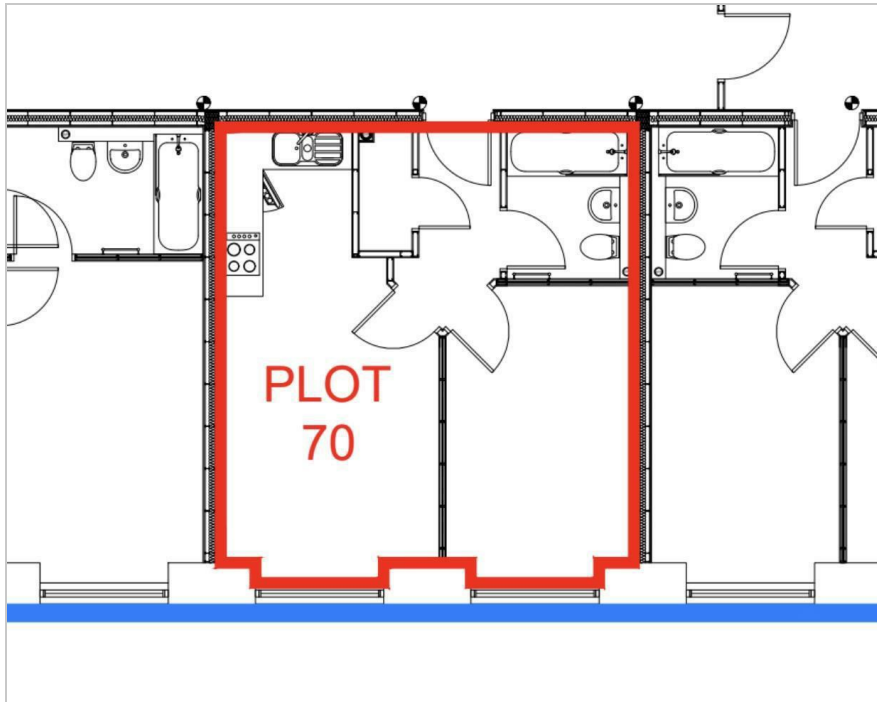
Meadow Mill Water Street, Stockport, SK1 2BX

Asking Price £145,000





## Floor Plan



## Area Map



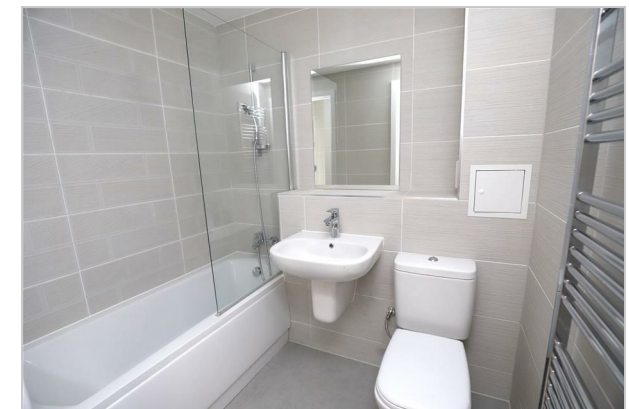
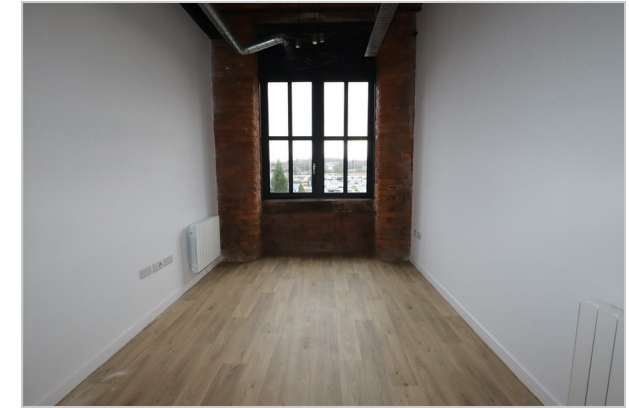
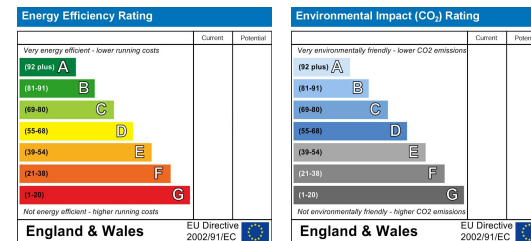
## Accommodation

- Completed development
- Brand new mill conversion
- 1, 2 & 3 bedroom apartments
- Viewings available
- High specification finishes
- Contemporary bathrooms
- 10- year new home warrantee
- Beautiful exposed brickwork
- EPC rating TBC
- Parking available to rent locally (subject to availability)

## Viewing

Please contact our Reside Stockport Office on 0161 808 0660 if you wish to arrange a viewing appointment for this property or require further information.

## Energy Efficiency Graph



These particulars, whilst believed to be accurate are set out as a general outline only for guidance and do not constitute any part of an offer or contract. Intending purchasers should not rely on them as statements of representation of fact, but must satisfy themselves by inspection or otherwise as to their accuracy. No person in this firm's employment has the authority to make or give any representation or warranty in respect of the property.

57a St Petersgate, Stockport, Cheshire, SK1 1DH

Tel: 0161 808 0660 Email: [info@residestockport.com](mailto:info@residestockport.com) [www.residestockport.com](http://www.residestockport.com)