



RESIDE

STOCKPORT



Castlewood 192 Wellington Road North
Heaton Norris, Stockport, SK4 2RZ

Asking Price £255,000



2



1



1



Castlewood 192 Wellington Road North

Heaton Norris, Stockport, SK4 2RZ

Castlewood is a recently finished development consisting of 40 apartments in The Heatons. Final 3 apartments remaining.

The location of the development in the green suburb of Heaton Norris in South Manchester is ideal. Originally designed as office space, the development has undergone a conversion to create unique individual apartments. Most of the apartments have large windows that offer ample light.

All apartments have been finished to a high standard with honey oak LVT flooring, custom-made dust grey kitchens with white Levant countertops, primary bathrooms with rain head showers, and Porcelenosa ceramic tiling in all bathrooms.

The development is conveniently located for commuters, with the M60 only half a mile away, and Heaton Chapel Station and Stockport Train Station within walking distance.

Location

The Heatons are a bustling quadrant of neighbourhoods offering both stunning views of the peak district whilst still being within reaching distance of Manchester city centre.

The area has been touted as the Soho of the North and it's not hard to see why! Home to the iconic SAVOY CINEMA the area is bursting with creativity and independent occupiers including the likes of WINE BOY (Natural and Organic Wines – Yes please!), FEED – You can shop here for local organic produce or enjoy a delicious dish from their own kitchen, pick up some locally produced STOCKPORT GIN or why not head over to MOO BOUTIQUE where you are sure to find an outfit for any occasion. From craft beers at HEATON HOPS to the amazing cocktails at ROCK SALT – The Heatons offer a leafy brimming with a vibrant café and arts culture.





Internal Finishes

Gris Sendre apartment entrance doors and white satinwood internal doors
Chrome ironmongery
Satinwood finish to internal skirtings and architraves
White emulsion to walls and ceilings
Honey Oak LVT flooring in living areas and hallways
Wool twist carpets in bedrooms
Atlantic Accessio slim-line electric thermofluid radiators with central timer (in hallway)
LED downlights to hallways, living areas, bathrooms and en-suites
Pendant light fittings to bedrooms

Kitchens

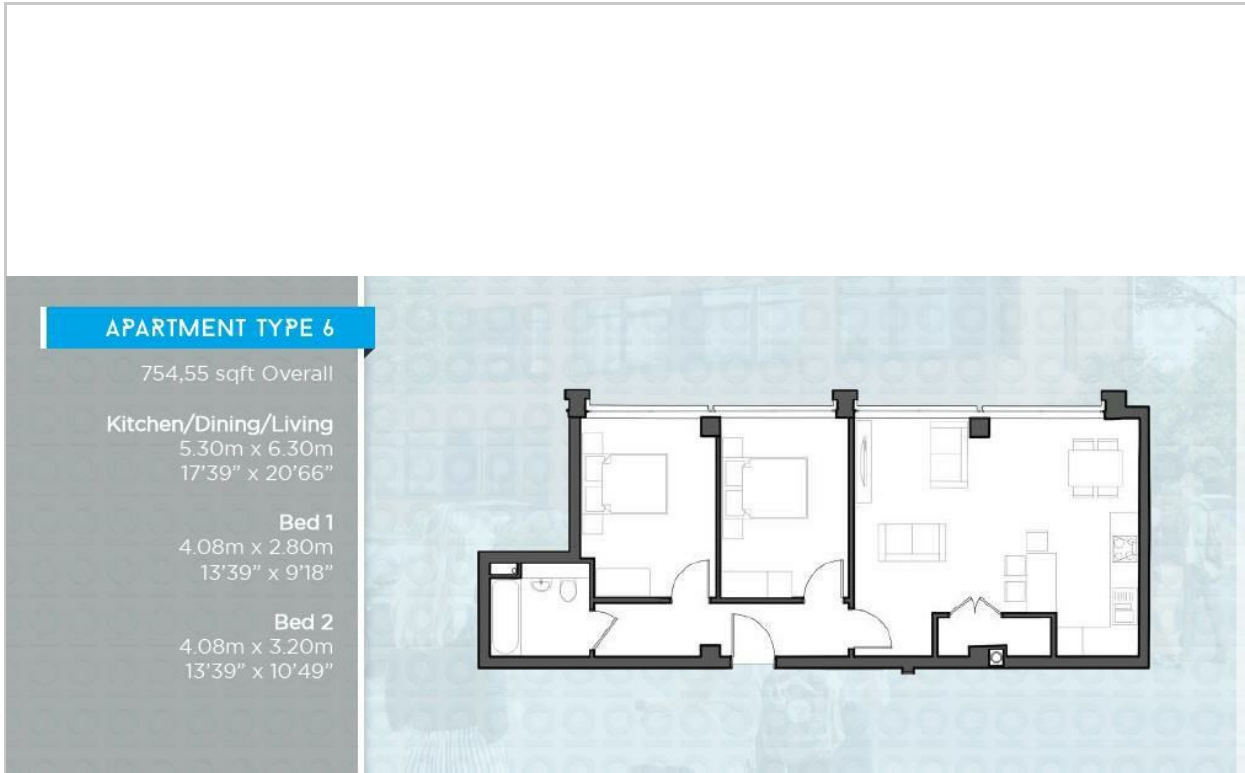
Bespoke English kitchen cabinets
Handleless door and drawer fronts
25mm square-edged work surfaces
Integrated Zanussi ceramic hob, oven cooker hood
Integrated Zanussi fridge-freezer and Indesit automatic dishwasher

Bathrooms & En-suites.

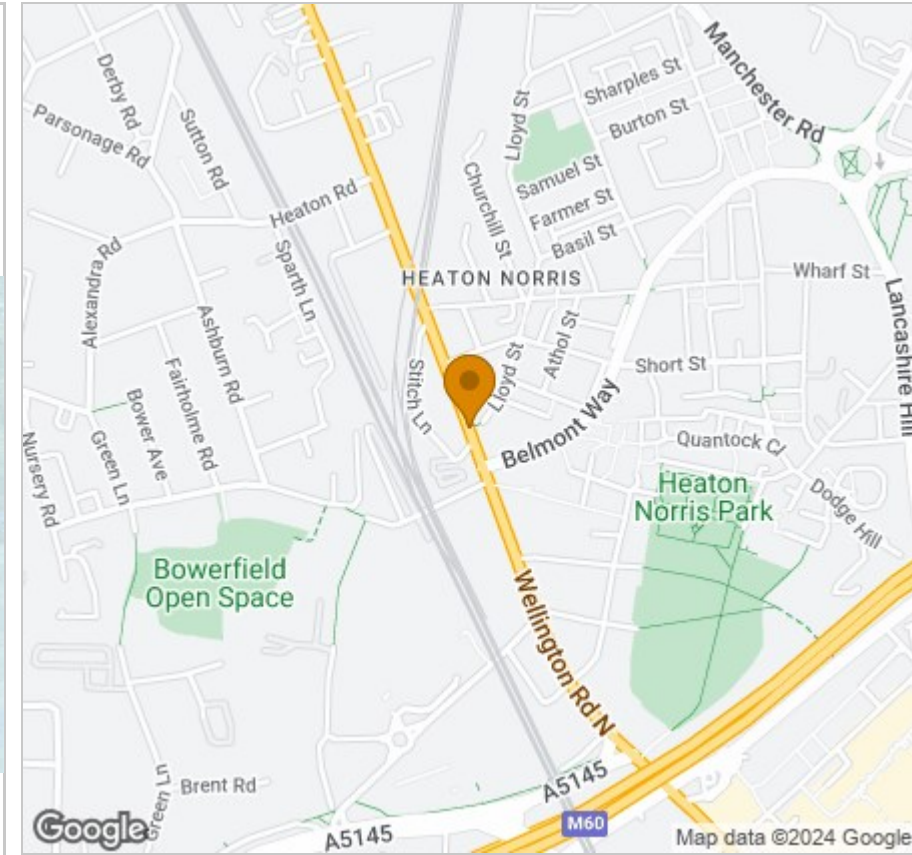
Lecico sanitary ware featuring wall hung wash basins and floor mounted WCs with concealed cisterns and soft close seats
Lecico baths
Vado brassware and showers
Rainhead showers
Porcelanosa ceramic tiled walls
Chrome ladder towel rails to bathrooms and en-suites
Porcelanosa tiling to bathrooms and en-suites

- Brand new development
- Show apartments available
- Spacious two bedroom apartments
- Ready to move into
- High specification throughout
- One parking space included
- Located in the Heaton
- Walking distance to both Stockport and Heaton Moor train stations
- Recently completed
- EPC rating C

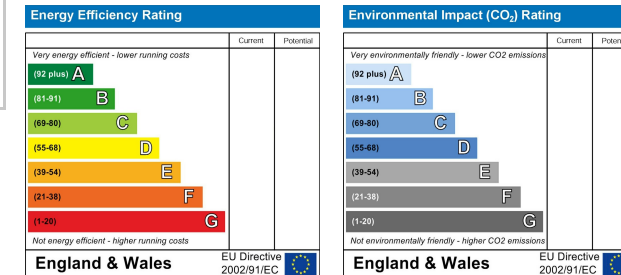
Floor Plan



Area Map



Energy Efficiency Graph



Viewing

Please contact our Reside Stockport Office on 0161 808 0660 if you wish to arrange a viewing appointment for this property or require further information.

These particulars, whilst believed to be accurate are set out as a general outline only for guidance and do not constitute any part of an offer or contract. Intending purchasers should not rely on them as statements of representation of fact, but must satisfy themselves by inspection or otherwise as to their accuracy. No person in this firm's employment has the authority to make or give any representation or warranty in respect of the property.

57a St Petersgate, Stockport, Cheshire, SK1 1DH

Tel: 0161 808 0660 Email: info@residestockport.com www.residestockport.com