

HANSON
ESTATES

ASKING PRICE

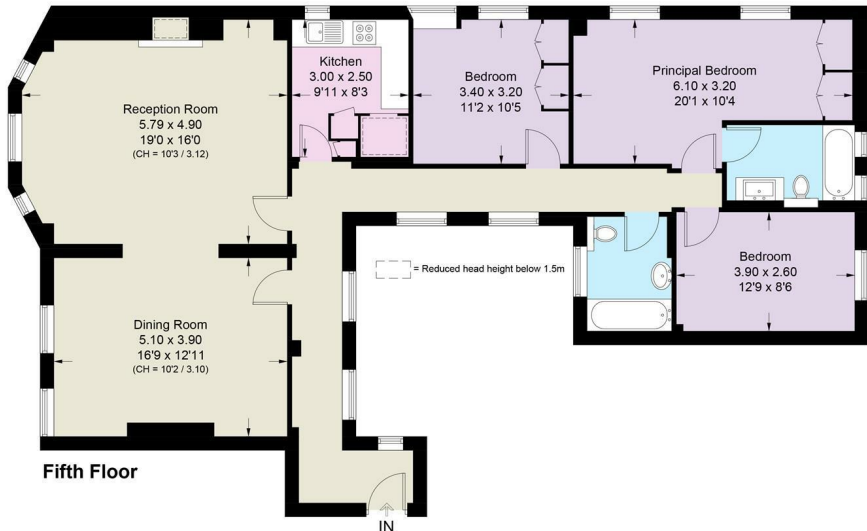
£3,980,000

Davies Street

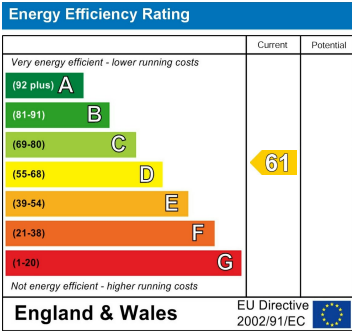
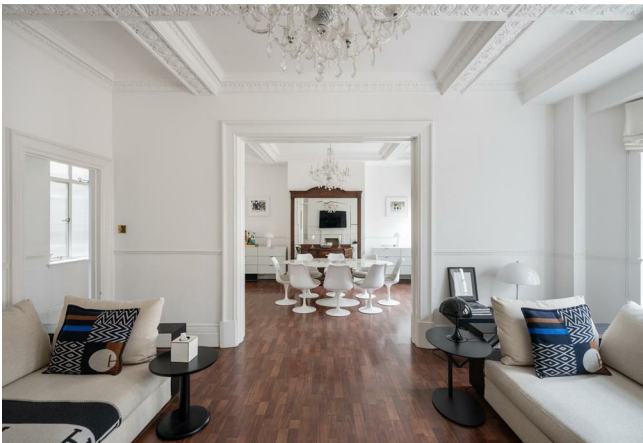
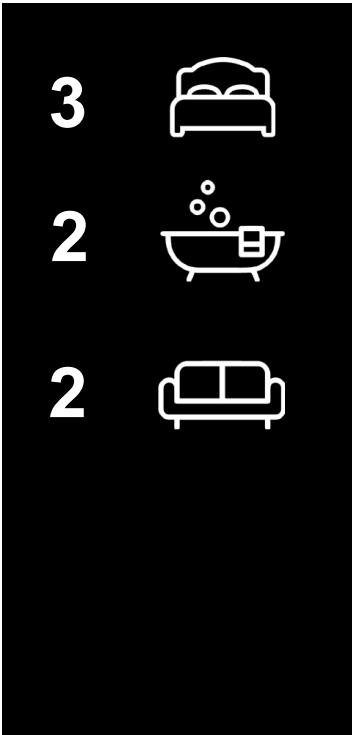
London, W1K 4ND

Claridges House, W1K

Approximate Area = 1391 sq ft / 129.2 sq m
Including Limited Use Area (62 sq ft / 5.8 sq m)



This plan is for layout guidance only. Not drawn to scale unless stated. Windows and door openings are approximate. Whilst every care is taken in the preparation of this plan, please check all dimensions, shapes and compass bearings before making any decisions reliant upon them. (ID1171597)



Agents Note: Whilst every care has been taken to prepare these particulars, they are for guidance purposes only. All measurements are approximate and are for general guidance purposes only and whilst every care has been taken to ensure their accuracy, they should not be relied upon and potential buyers/tenants are advised to recheck the measurements

HANSON
ESTATES

OFFICE ADDRESS
Mayfair 23 Berkeley Square
Mayfair
Westminster
W1J 6HE

OFFICE DETAILS
020363354444
aaron@hansonestates.com