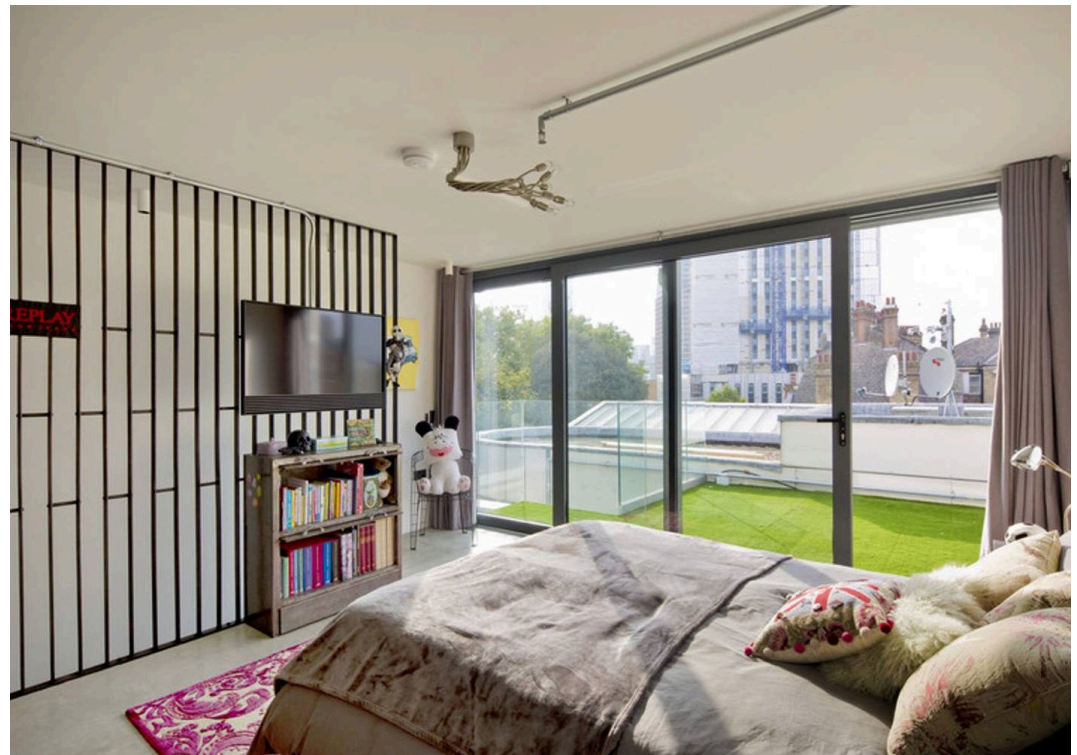
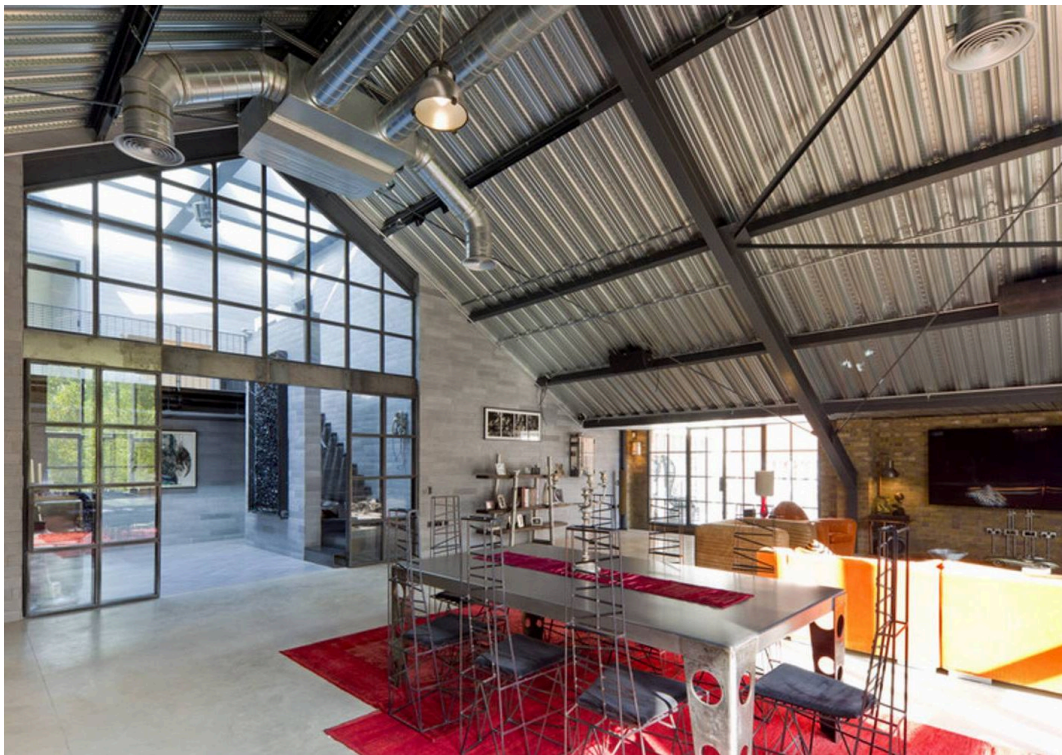
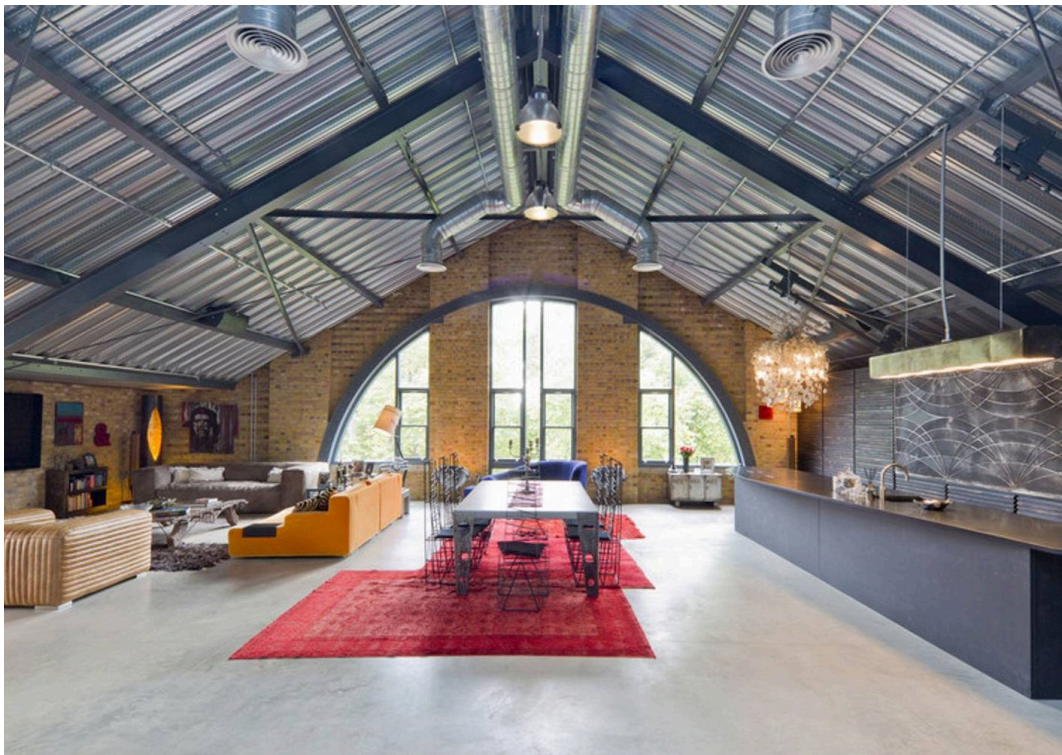




Embassy Works, Lawn Lane, Vauxhall
£7,450,000 | £5,000 pcm





Embassy Works, Lawn Lane

Vauxhall

A magnificent loft style penthouse apartment located in Embassy Works with a stunning view over Vauxhall Park.

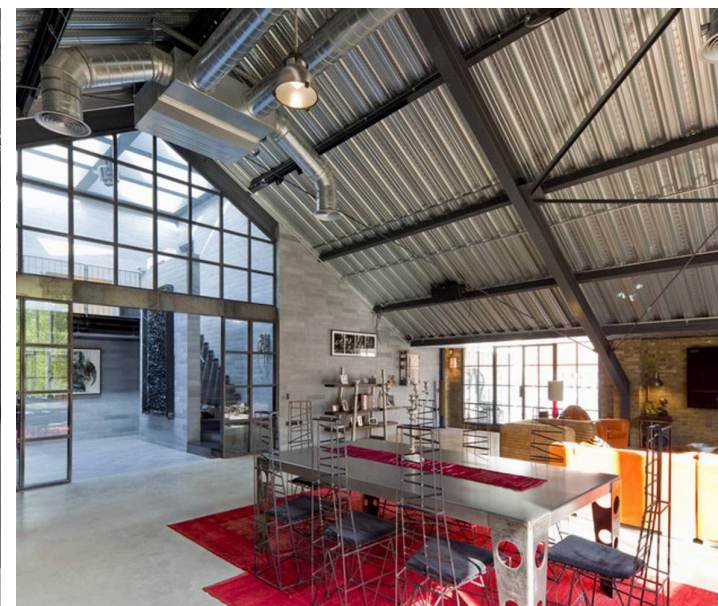
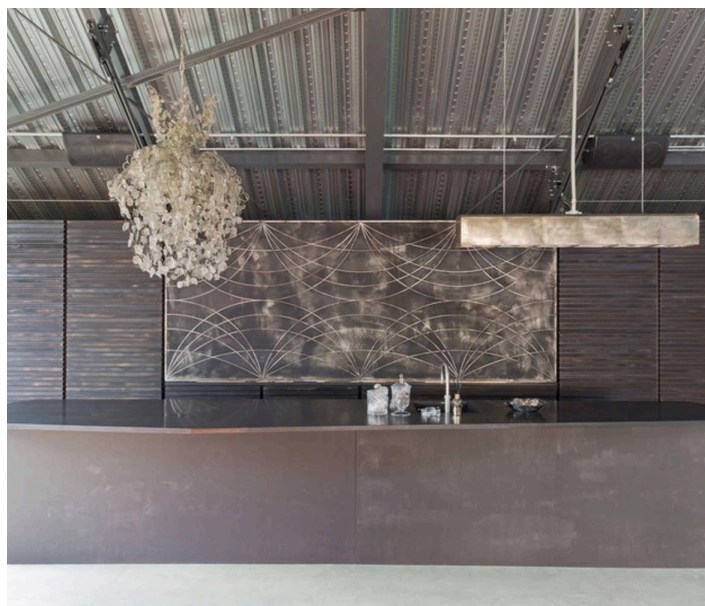
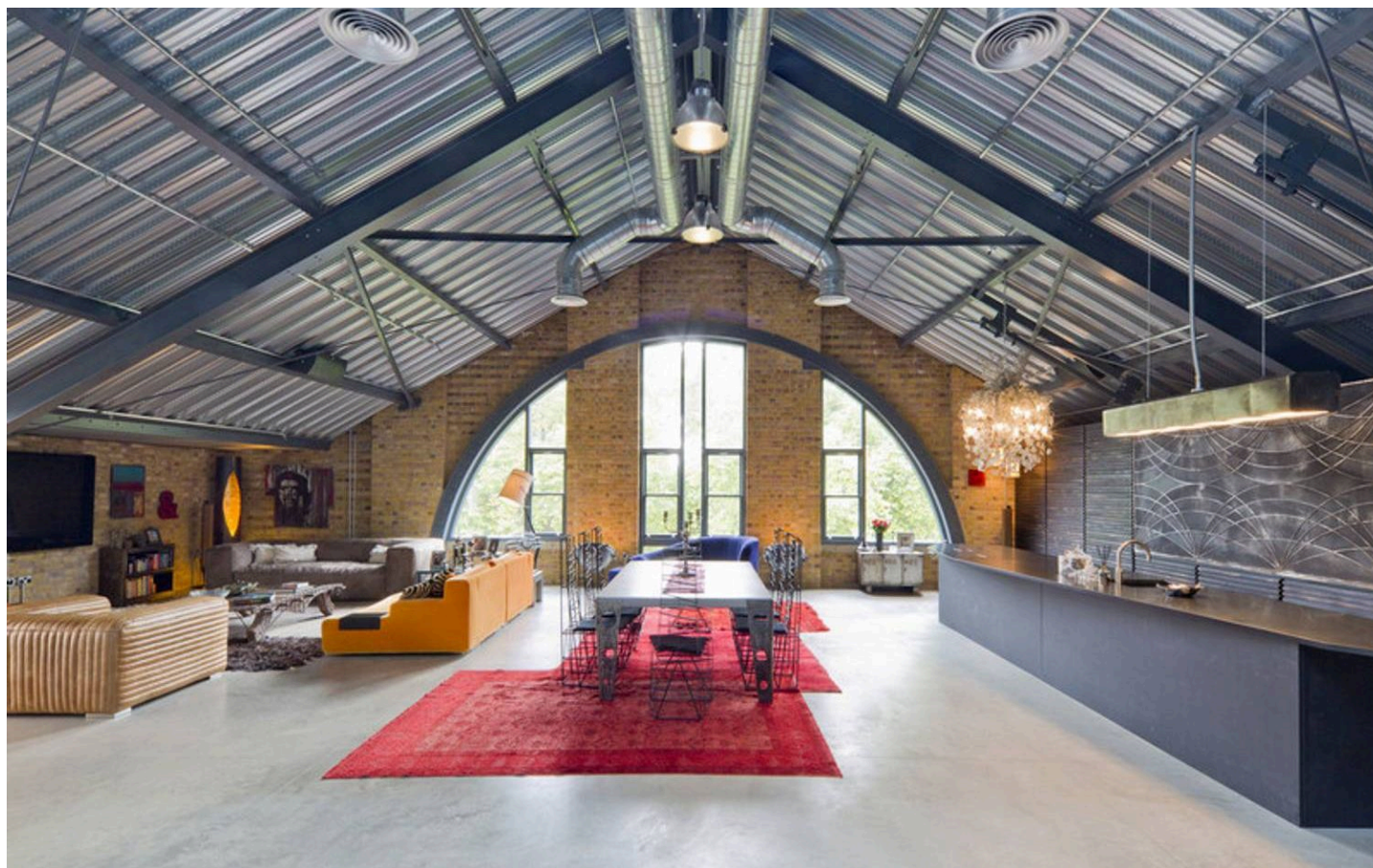
Council Tax band: G

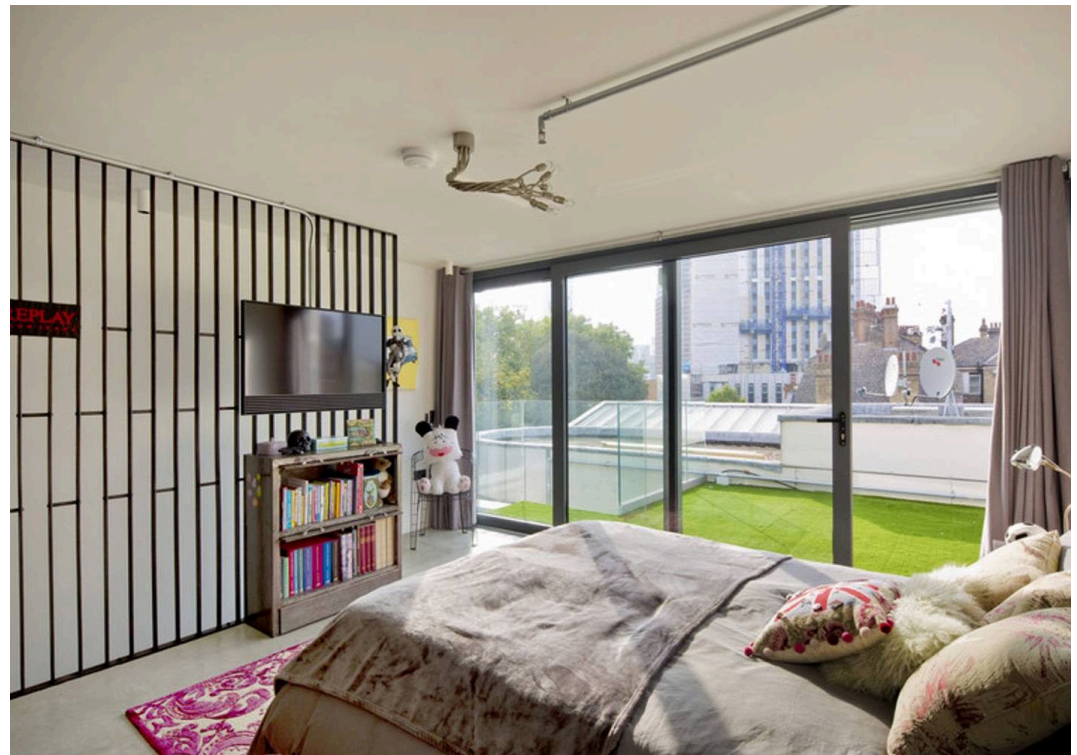
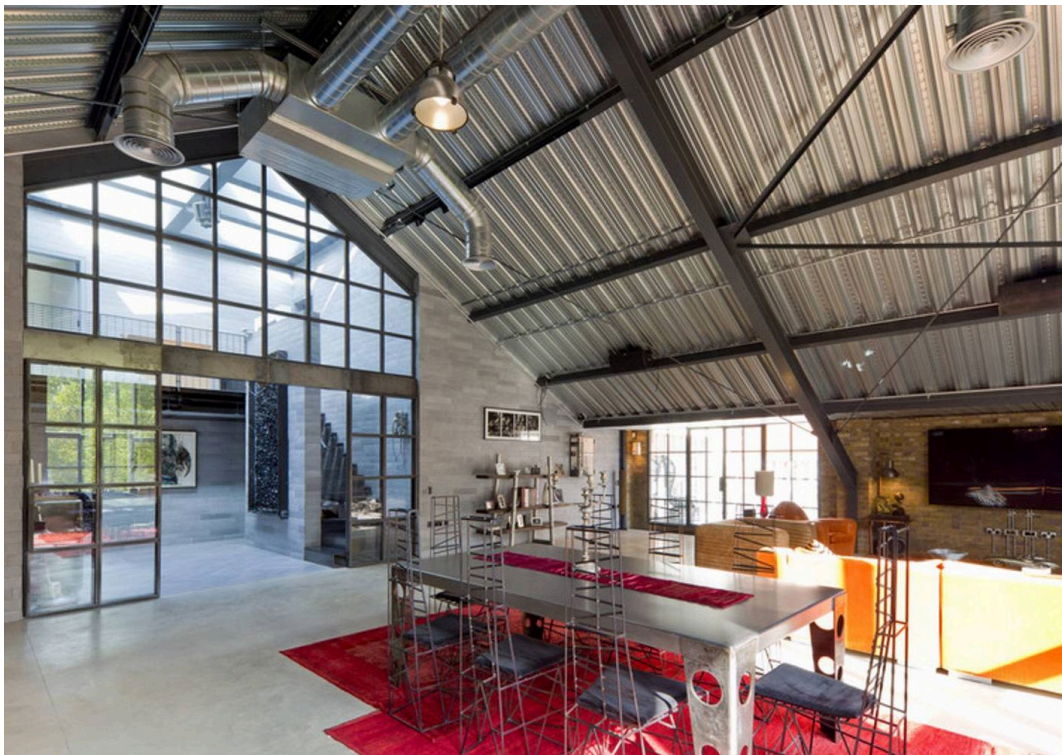
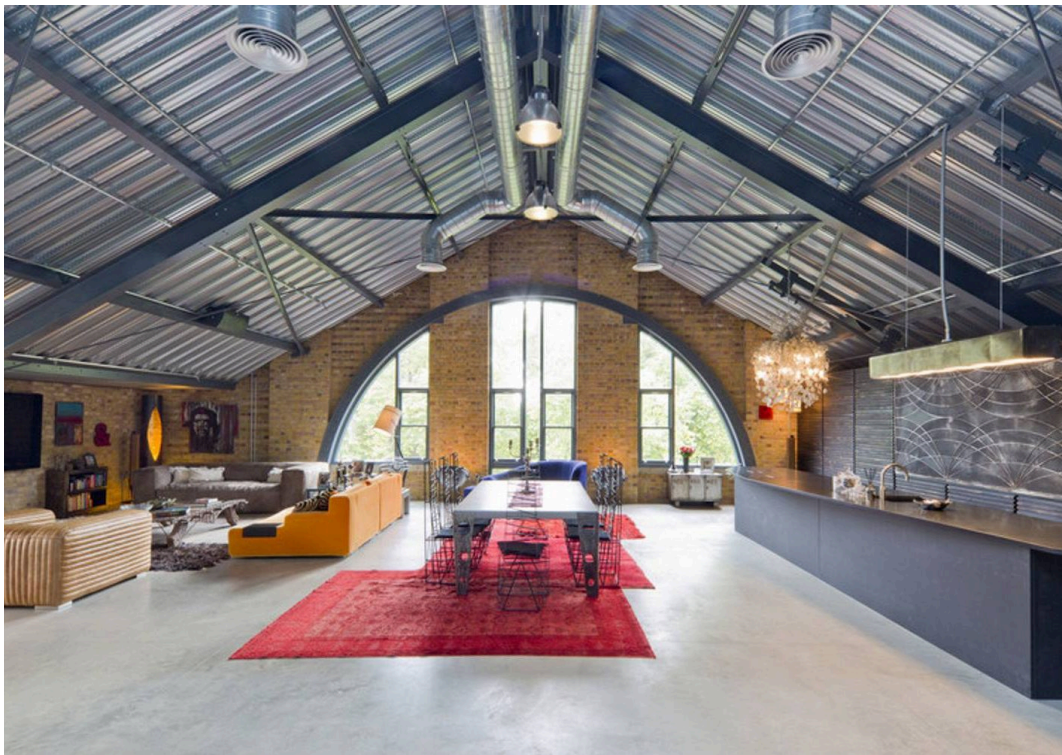
Tenure: Leasehold

EPC Energy Efficiency Rating: C

EPC Environmental Impact Rating: C

- Penthouse with views of Vauxhall Park
- Tremendous 43ft x 31ft open plan kitchen/ reception
- Serving kitchen for entertaining
- Four bedrooms
- Striking master bedroom suite
- Lift & 24 hour concierge
- Two parking spaces
- Three private roof terraces
- Convenient location for The City and West End
- Fully air conditioned





Embassy Works

Approximate Gross Internal Area (Excluding Void)
3795 sq ft / 352.6 sq m

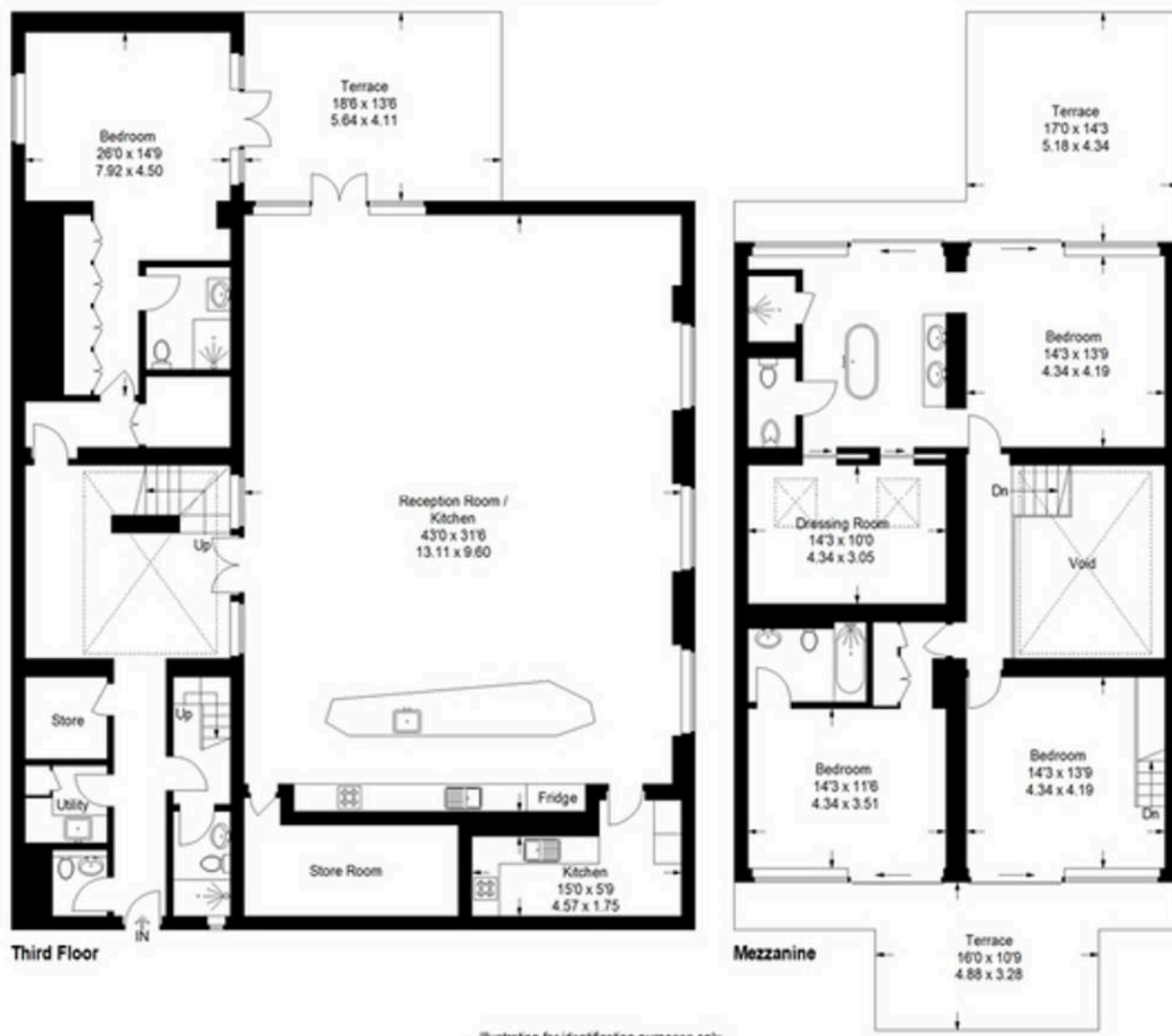
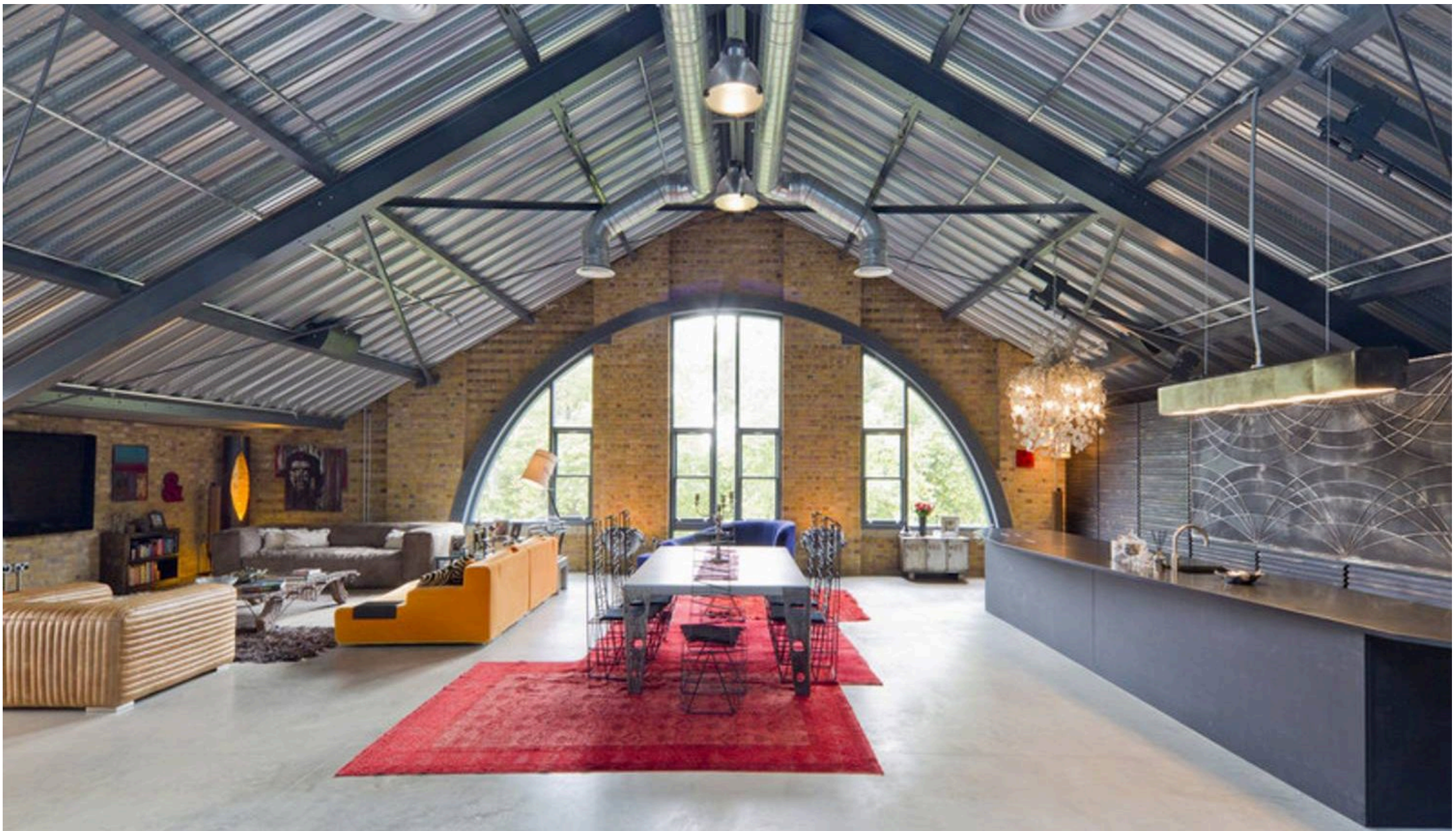


Illustration for identification purposes only,
measurements are approximate.



Bhoday Estates

26 Crescent Way, London - SW16 3AJ

02037801111 • hello@bhoday.co.uk • bhoday.co.uk/

