



Tree Tops, Peckforton Hall Lane, Spurstow

Guide Price £1,200,000



## Tree Tops, Peckforton Hall Lane, Spurstow

A beautiful, detached residence in an exceptional semi-rural setting. Set along one of Cheshire's most sought-after country lanes, Tree Tops is a beautifully positioned home offering privacy, space and countryside views, all within easy reach of local villages and transport links. Surrounded by mature greenery and open landscapes, the property enjoys a wonderfully peaceful setting, ideal for modern country living. Tree Tops is a thoughtfully arranged residence that blends comfort with flexibility, offering well-proportioned accommodation suited to both family life and entertaining. The house is approached via a private drive, creating an immediate sense of arrival and seclusion. The reception rooms are generous and light-filled, with large windows framing views across the gardens and surrounding countryside. The layout flows naturally, providing a balance between open spaces and more intimate rooms, ideal for both everyday living and formal occasions. The kitchen forms the heart of the home, designed as a welcoming space for family and guests alike, with direct access to the garden, perfect for indoor-outdoor living during the warmer months. The five bedrooms are well proportioned and calmly styled, with the principal suite enjoying a particularly attractive outlook and a sense of quiet retreat. With three bathrooms, the accommodation offers excellent flexibility, suitable for home working, guests or multi-generational living. The gardens at Tree Tops are a notable feature providing a variety of spaces for relaxation, recreation and entertaining. Predominantly laid to lawn and bordered by mature trees and planting, the grounds offer both privacy and an ever-changing outlook through the seasons.

There is a large glass veranda providing shelter from spring showers whilst still enjoying the garden and giving a beautiful outside dining space. A home office with power, heating, internet and speakers for music could easily be used as a luxury summer house or beauty room. There is also the option to add a hot tub if the buyer wanted to. Terraces and seating areas are well positioned to take advantage of the setting, making the most of long summer evenings and views over the surrounding countryside. Situated in an enviable position on Peckforton Hall Lane, regarded as one of the area's most desirable rural addresses. The property lies within easy reach of the villages of Spurstow, Bunbury and Tarporley, which offer a range of local amenities, pubs, and highly regarded schools.







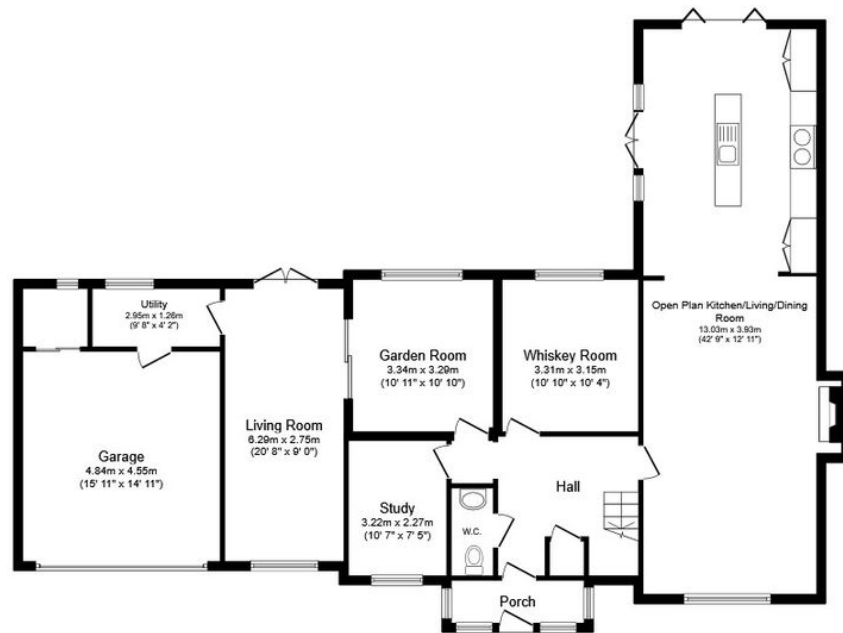






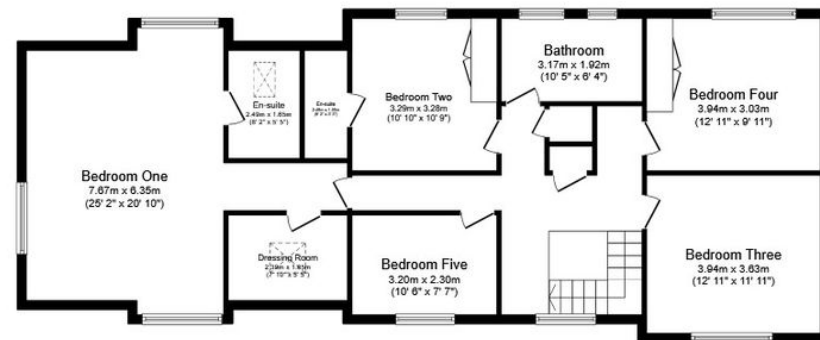






### Ground Floor

Floor area 150.0 sq.m. (1,614 sq.ft.)



### First Floor

Floor area 120.3 sq.m. (1,295 sq.ft.)

Total floor area: 270.2 sq.m. (2,909 sq.ft.)

This floor plan is for illustrative purposes only. It is not drawn to scale. Any measurements, floor areas (including any total floor area), openings and orientations are approximate. No details are guaranteed, they cannot be relied upon for any purpose and do not form any part of any agreement. No liability is taken for any error, omission or misstatement. A party must rely upon its own inspection(s). Powered by [www.Propertybox.io](http://www.Propertybox.io)

[INFO@SIGNATUREPROPERTYPARTNERS.CO.UK](mailto:INFO@SIGNATUREPROPERTYPARTNERS.CO.UK)

[WWW.SIGNATUREPROPERTYPARTNERS.CO.UK](http://WWW.SIGNATUREPROPERTYPARTNERS.CO.UK)