



Murchison Road, Leyton

Guide Price £750,000 -£800,000



Murchison Road, Leyton

Beautiful three-bedroom brick-fronted Victorian house, perfectly positioned in the highly sought-after area of Leyton. Boasting a blend of period features and modern enhancements, this delightful home offers an exceptional living experience in a vibrant community setting. This home features three spacious double bedrooms, each offering ample space for relaxation and comfort. The open-plan lounge is perfect for both entertaining guests and enjoying family time. The extended kitchen/diner is fully fitted and modern, creating a generous space for dining and socializing. It opens out onto a private, well-maintained lawn garden, perfect for children to play or for relaxing after a long day. The property also includes a convenient downstairs WC and a modern family bathroom upstairs, providing comfort and style for everyday living.

Located close to the ever-popular Francis Road, this property is at the heart of a vibrant community with a distinctive village feel. You'll find an array of local shops, boutique cafes, and charming restaurants right on your doorstep, creating a lively atmosphere and providing everything you need within a short walk. This house is perfectly situated for easy commuting and travel, with Leyton Midland Overground and Leytonstone and Leyton Underground stations nearby. Excellent local bus routes also offer direct access to both Walthamstow and the extensive shopping and entertainment facilities at Westfield Shopping Centre.

For families, this area is ideal, boasting several highly-regarded schools, including the Norlington School, which has achieved an Ofsted rating of 1. The property's proximity to outstanding schools makes it an ideal choice for families looking to settle in a supportive and thriving community.

With its prime location, excellent transport links, good schools, and a vibrant community atmosphere, this property is in ready-to-move-into condition and offers an exceptional opportunity to make a wonderful family home. Don't miss the chance to live in the heart of Leyton — contact us today to arrange a viewing and experience all that this fantastic home has to offer. Quote Ref DM008





Open-Plan Lounge/Diner

The heart of the home is the spacious open-plan lounge and dining area, featuring striking wooden floors, a distinctive chimney breast, and soaring high ceilings that enhance the sense of space and grandeur.

A large bay window to the front floods the room with natural light and adds classic architectural charm, while a rear window offers views of the garden and ensures the space remains bright and welcoming throughout the day.

Perfect for both relaxed family living and stylish entertaining, this room blends original features with contemporary comfort in a truly timeless setting.

Kitchen

The stylish kitchen is a standout feature, boasting wooden flooring and a fresh, neutral décor that complements a range of tastes. Sleek kitchen units are arranged along two walls, maximising both workspace and storage, while a side window fills the room with natural light. A door at the rear of the kitchen opens directly onto the garden, creating an easy indoor-outdoor flow that's perfect for summer dining or relaxed weekends.

Bathroom

Located upstairs is the family bathroom, fully tiled and fitted with a bath, WC, sink, and a window for natural ventilation and light.



Bedrooms

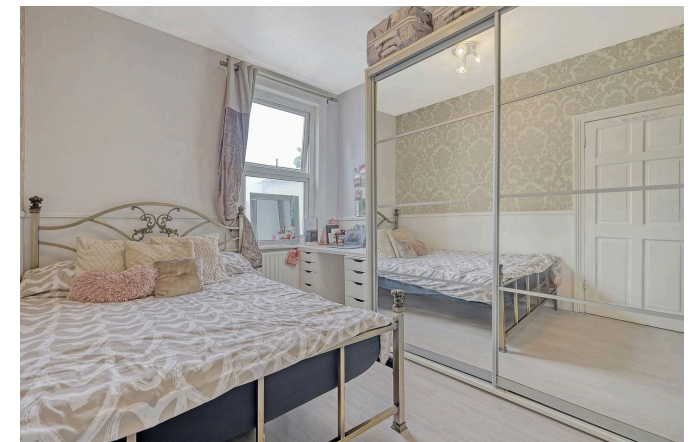
Upstairs, the home offers three generously sized double bedrooms, all decorated in a neutral palette and featuring wooden flooring. The master bedroom is particularly impressive, with fitted wardrobes, two double-glazed windows, and ample space throughout. Bedroom two also benefits from wooden flooring and a large window, creating a bright and welcoming atmosphere. The third bedroom, equally well-proportioned, includes wooden flooring and a single window, making it ideal as a guest room, home office, or nursery.

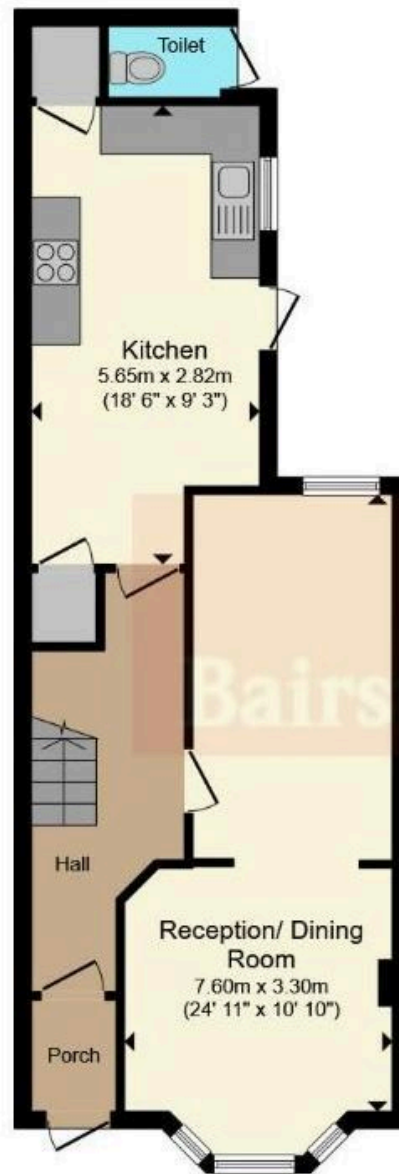
Garden

Outside, you'll find a well-maintained family lawned garden—a fantastic space to relax, enjoy outdoor dining, or let the kids play in a safe and private environment.

Summary

This is a great Victorian house in a sought-after family location, just off the popular Francis Road. With excellent local schools, independent shops, restaurants, and superb transport links all nearby, this home offers the perfect blend of community, convenience, and character.





Ground Floor



First Floor

Total floor area 97.7 sq.m. (1,052 sq.ft.) approx

INFO@SIGNATUREPROPERTYPARTNERS.CO.UK

WWW.SIGNATUREPROPERTYPARTNERS.CO.UK