



# *Celtic Cottage, Maeshafn*

Offers Over £650,000

# Celtic Cottage

Nestled in the heart of the highly sought-after village of Maeshafn, Celtic Cottage is a stunning four-bedroom detached stone cottage that effortlessly combines timeless charm with modern comfort. Thoughtfully self-built by the current owners, this beautifully presented home spans approximately 1,867 sq. ft. across two generous floors, making it an ideal haven for families or anyone seeking a peaceful rural lifestyle with convenient access to local amenities.

Maeshafn enjoys an enviable location—just 3 miles from the vibrant market town of Mold and approximately 15 miles from the historic city of Chester. With excellent road links via the A494 and A55, the property offers seamless connectivity to North Wales, the North West, and beyond, making it perfect for commuters and those who value both countryside tranquility and urban convenience.



# Celtic Cottage



Upon entering the welcoming hallway, you are immediately drawn into a warm and inviting living space. At the front of the home, a spacious lounge awaits—perfect for entertaining—featuring a striking stone fireplace with a log burner and large window and patio doors that bathe the room in natural light.

The heart of the home is the expansive kitchen/diner, designed with both functionality and family life in mind. This bright, open space offers plenty of room for cooking, dining, and gathering. Just off the kitchen lies a cosy sitting room, ideal for relaxing evenings or use as a snug. Completing the ground floor is a practical utility room, a convenient downstairs WC, and a versatile storeroom that could easily double as a home office or hobby space.





# First Floor

Upstairs, the property offers four well-proportioned bedrooms. The main bedroom features a stylish en-suite shower room, while the remaining bedrooms provide flexible accommodation for children, guests, or workspace. Ample built-in storage is available both on the landing and within some of the bedrooms.

A particular highlight is the beautifully appointed family bathroom, showcasing a freestanding claw-foot bath, walk-in shower, and elegant period fixtures that exude classic sophistication.







## Outside & Additional Features

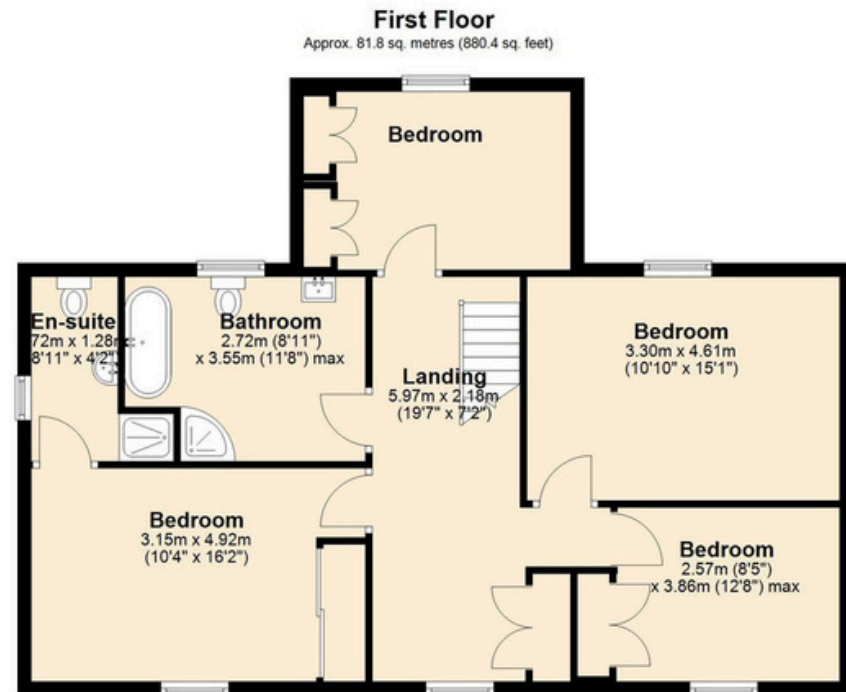
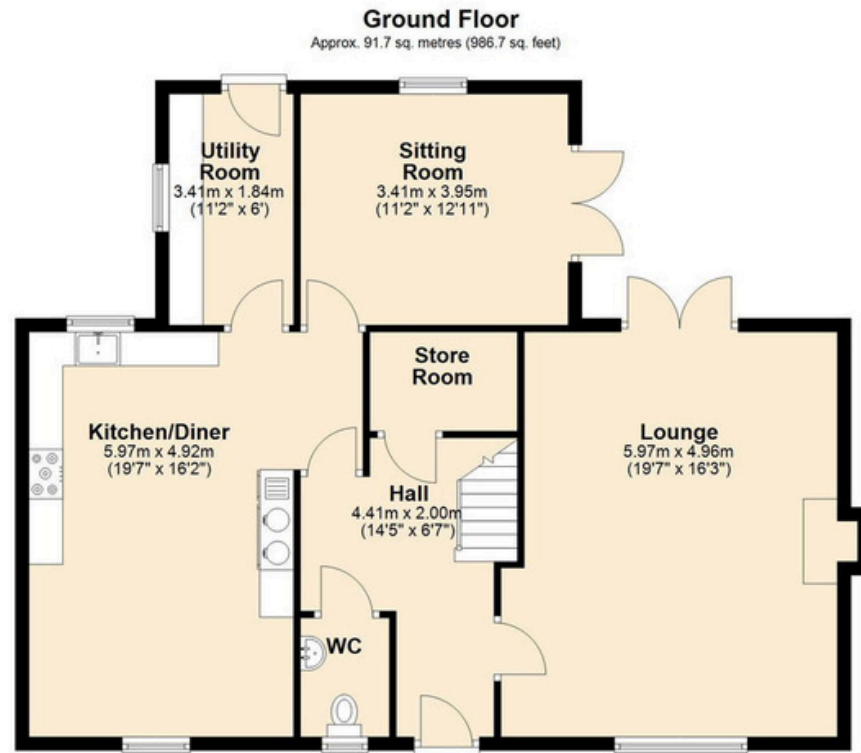
One of the most distinctive features of Celtic Cottage is the charming converted outbuilding, now transformed into a traditional pub-style bar. Complete with fitted seating, beer taps, and a well-crafted bar area, it's the ultimate space for entertaining or unwinding in a truly unique setting—with further potential for alternative uses.

Equally impressive, the outdoor areas boast beautifully maintained gardens at both the front and rear. The rear garden is designed for entertaining, with patio doors from the bar opening directly onto a spacious paved patio—ideal for al fresco dining and soaking in the tranquil surroundings. A covered, built-in barbecue area enhances the space, making outdoor gatherings enjoyable year-round. A private driveway provides generous parking for multiple vehicles and leads to a large garage.

Located in the peaceful village of Maeshafn—renowned for its scenic walks, welcoming community, and unspoiled countryside—this exceptional property offers a rare opportunity to enjoy rural Welsh living at its finest, with the convenience of nearby towns and excellent transport links.







Total area: approx. 173.5 sq. metres (1867.1 sq. feet)

[INFO@SIGNATUREPROPERTYPARTNERS.CO.UK](mailto:INFO@SIGNATUREPROPERTYPARTNERS.CO.UK)

[WWW.SIGNATUREPROPERTYPARTNERS.CO.UK](http://WWW.SIGNATUREPROPERTYPARTNERS.CO.UK)