

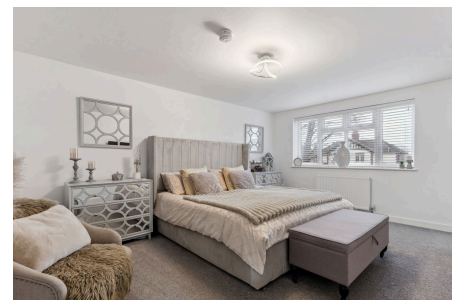


SIGNATURE PROPERTY PARTNERS

London Road, Biggleswade, SG18

Offers Over £800,000

🛏 5 🚿 3 🚗 0



An Exquisite Residence in the Heart of Biggleswade.

Nestled in one of Biggleswade's most sought-after locations, this individually designed executive home is a true masterpiece, offering a harmonious blend of elegance, space, and modern sophistication. Spanning approximately 2,244 sq. ft. across three levels, this stunning five-bedroom, three-bathroom residence has been meticulously crafted for those who appreciate the finer things in life.

YOUR PARTNERS IN LUXURY LIVING

LUKE ALLEN
EMAIL: LUKE.ALLEN@SIGNATUREPP.CO.UK

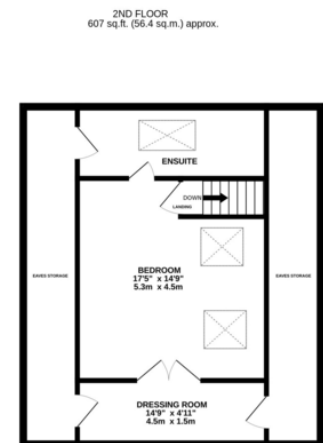
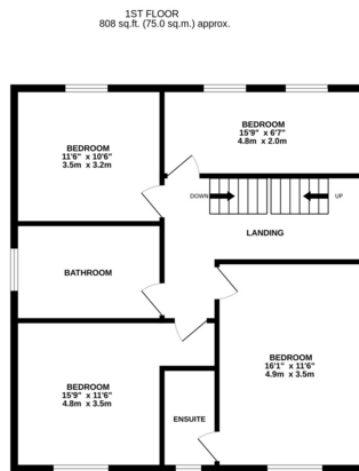
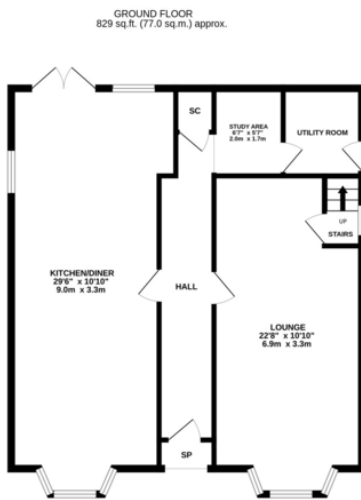




SIGNATURE PROPERTY PARTNERS

Key Features

- Sought-After Location
- Five Generous Bedrooms
- Open-Plan Kitchen & Dining
- High-End Finishes
- Approved Planning Permission
- Spacious Layout
- Three Stylish Bathrooms
- Expansive Rear Garden
- Ample Parking & Double Garage
- Must See Property



TOTAL FLOOR AREA: 2244 sq.ft. (208.5 sq.m.) approx.

Whilst every attempt has been made to ensure the accuracy of the floorplan contained here, measurements of doors, windows, rooms and any other items are approximate and no responsibility is taken for any error, omission or mis-statement. This plan is for illustrative purposes only and should be used as such by any prospective purchaser. The services, systems and appliances shown have not been tested and no guarantee as to their operability or efficiency can be given.

Made with Metropix ©2024

YOUR PARTNERS IN LUXURY LIVING

LUKE ALLEN
EMAIL: LUKE.ALLEN@SIGNATUREPP.CO.UK

