



Wilmot road, Leyton

Offers Over £580,000



SIGNATURE
PROPERTY PARTNERS

Wilmot road, Leyton

Offers in excess £580,000 Discover this delightful three-bedroom Victorian home on the desirable Wilmot Road in Leyton, offered chain-free and perfect for first-time buyers. This property beautifully combines period charm with modern comforts, providing a warm and inviting living space.

The open-plan living and dining area is highlighted by high ceilings, rich wooden floors, and a bay window that fills the space with natural light. The kitchen, featuring sleek, modern units and appliances, downstairs bathroom and summer house in well-maintained garden. The garden offers both paved and lawn areas, ideal for relaxation or entertaining, and includes a versatile outbuilding for additional storage or creative use. A conveniently located downstairs bathroom adds to the home's practicality.

Upstairs, the home offers three generously sized double bedrooms, each providing ample space and comfort. Nestled in a quiet cul-de-sac just off Leyton High Road, this property provides a peaceful retreat while remaining within walking distance of the vibrant local community.

Leyton is known for its boutique shops, independent cafes, and a vibrant community atmosphere that makes it a special place to live. Whether you're enjoying a coffee at a local cafe or browsing the unique shops along the high street, you'll find plenty to love about this neighborhood. Excellent transport links from Leyton Midland Overground Station and Leyton Underground Station make commuting easy and convenient.

This area is also perfect for families, with well-regarded Ofsted-rated schools and beautiful green spaces like Coronation Gardens Park and Jubilee Park nearby. Don't miss the chance to own this charming Victorian house in a thriving community—it's an excellent first-time purchase! Quote reference number when calling DM008





Dining/Reception Room

The open-plan diner/reception room is a welcoming space with elegant oak wooden flooring that adds warmth and character. The room benefits from an abundance of natural light, courtesy of a bay window at the front. The condition throughout is excellent, providing a stylish and inviting environment for dining and relaxation.

Kitchen

The modern kitchen is a highlight of the home, featuring sleek units along both sides, complemented by a marble-effect worktop that enhances the contemporary feel. The wooden doors and tiled floor add to the overall modern aesthetic. The kitchen leads directly onto a private rear garden, making it a perfect space for those who enjoy indoor outdoor living.

Bathroom

The partially tiled bathroom is fitted with a white suite that includes a bath, offering a clean and crisp look. The tiled floor is easy to maintain, and the large window provides ample natural light, creating a bright and airy atmosphere.



Bedroom's

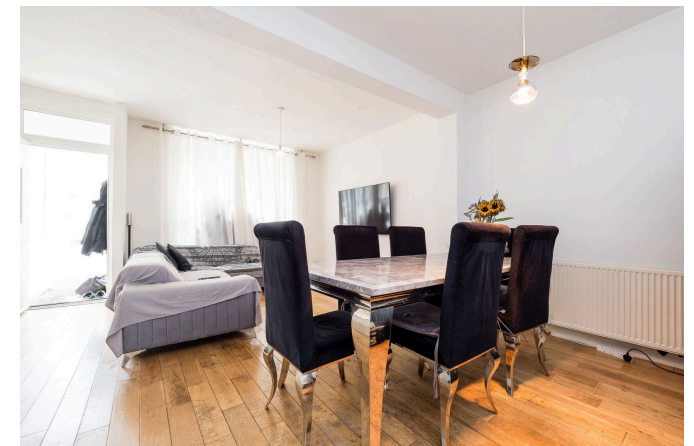
- Bedroom 1: A generous double bedroom with two large windows that flood the room with light. The neutral decor and carpeted flooring create a calm and serene environment.
- Bedroom 2: Another double bedroom, also featuring a large window and carpeted floor. This room offers comfort and space, ideal for a restful night's sleep.
- Bedroom 3: Currently utilized as a single bedroom with a workspace, this versatile room can easily accommodate a double bed, making it perfect for various uses depending on your needs.

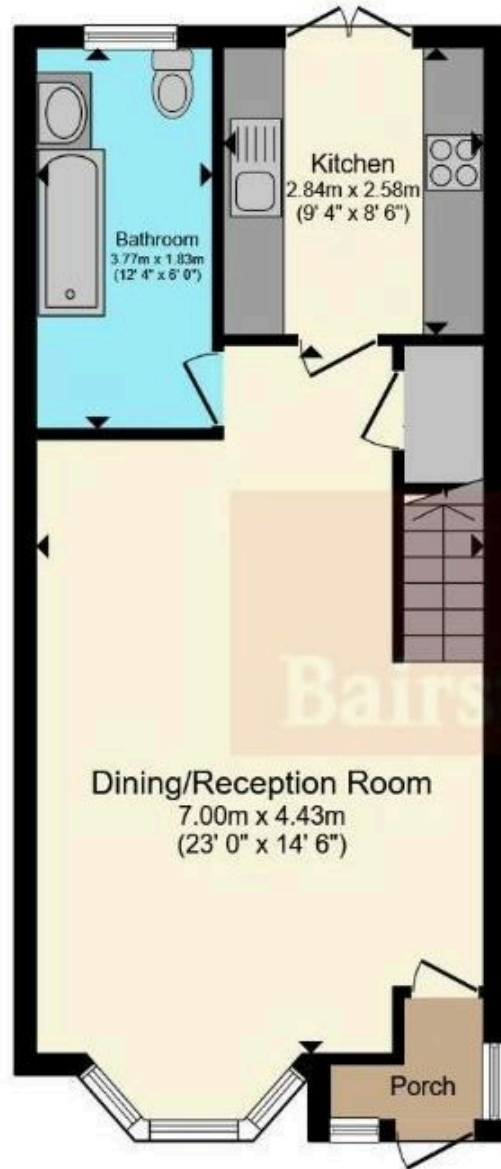
Garden

The private rear garden is a delightful outdoor space, partially decked for easy maintenance, and includes a lawn area, perfect for relaxation or entertaining. The garden is designed for convenience and enjoyment, with plenty of space for gatherings.

Outbuilding

At the end of the garden, there is an outbuilding that serves as excellent additional storage or can be used as an extra bedroom for guests, offering flexibility and convenience for various lifestyle needs.





Ground Floor



First Floor