



SIGNATURE  
PROPERTY PARTNERS



## Regency Court, Leytonstone

Offers Over £350,000

🛏️ 2 🚿 1 🚪 1



- Stylish Two-Bedroom Apartment
- The property is being sold chain-free
- Located in the sought-after area of Leytonstone
- Small block of just eight apartments
- Brand-new 125-year lease





Stylish Two-Bedroom Apartment in Leytonstone Presenting a beautiful two-bedroom apartment on the first floor of a modern, small block of just eight apartments, perfect for those seeking a contemporary and convenient lifestyle. This well-maintained flat offers two spacious double bedrooms and a bright, open-plan lounge and kitchen area, ideal for modern living and entertaining. The property is being sold chain-free for a hassle-free purchase and comes with a brand-new 125-year lease. Residents have access to attractive communal gardens, providing a peaceful outdoor space to relax and unwind. Located in the highly sought-after area of Leytonstone, the apartment benefits from excellent local amenities, including reputable schools, superb transport links, and the picturesque Wanstead Flats. This is a rare opportunity to own a fantastic home in a vibrant and well-connected neighborhood. Arrange a viewing today. Quote reference number DM008



Approximate Gross Internal Area  
46.63 sq m / 501.92 sq ft

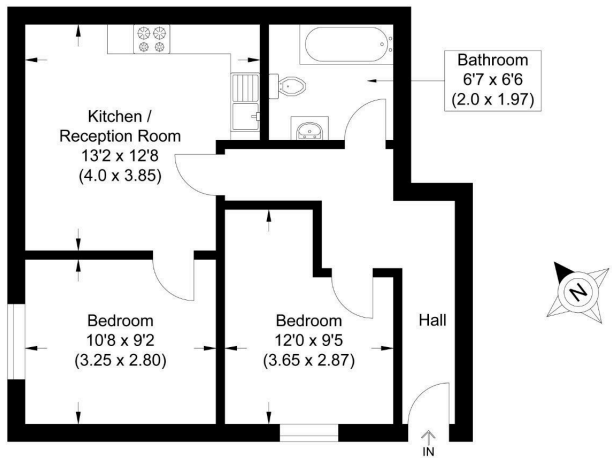


Illustration for identification purposes only, measurements are approximate, not to scale.

Energy Efficiency Rating		
	Current	Potential
Very energy efficient - lower running costs		
(92 plus) <b>A</b>		
(81-91) <b>B</b>		
(69-80) <b>C</b>	78	78
(55-68) <b>D</b>		
(39-54) <b>E</b>		
(21-38) <b>F</b>		
(1-20) <b>G</b>		
Not energy efficient - higher running costs		
<b>England &amp; Wales</b>	EU Directive 2002/91/EC	