

LEASEHOLD



Apartment

APARTMENT B16 THE ARC B16 53 MARTINGALE WAY, PORTISHEAD, BRISTOL RS20 7LH

Price Guide

£440,000

FEATURES

- Third Floor Apartment
- Two Bathrooms
- Stunning Balcony
- Three Bedrooms
- Harbourside Location
- Secure Parking Space



bestestates
SALES | LETTINGS | MANAGEMENT

3 Bedroom Apartment located in Portishead

Living/ Kitchen / Dining Room

36'5" x 19'0"

11.10m x 5.80m (36' 5" x 19')

Master Bedroom

16'0" x 8'10"

4.90m x 2.80m (16' 1" x 9' 2")

Master Ensuite

5'10" x 5'10"

Bedroom 2

12'9" x 7'10"

3.90m x 2.40m (12' 10" x 7' 10")

Bedroom 3

12'9" x 7'10"

3.90m x 2.40m (12' 10" x 7' 10")

Bathroom

6'10" x 5'6"

2.90m x 1.80m (9' 6" x 5' 11")

Balcony

Gated Secure Parking

Full Description

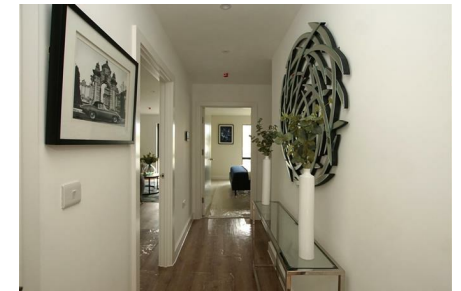
Apartment B16 The ARC - 3 Bedrooms 2 Bathrooms

Perfectly positioned on the fringes of Portishead Marina, ARC is home to 26 new apartments. With 1, 2 and 3 bedroom homes available, including a penthouse with panoramic views, all apartments are finished to a high specification and a lift to all floors.

Located in the heart of Portishead, there is an abundance of independent shops, bars and restaurants, all within walking distance of ARC.

Whether you're looking to enjoy dinner with friends, a stroll around the shops or a day at the beach, get ready to explore this vibrant neighbourhood.

With secure parking, video entry system and panoramic views, this property is not to be missed.



BESTE ESTATES SALES | 69 OAKFIELD ROAD, CLIFTON, BRISTOL, BS8 2BB

Call us on

01173259721

sales@besteestates.co.uk

Council Tax Band

C



Energy Efficiency Rating		
	Current	Potential
Very energy efficient - lower running costs		
(92 plus) A		
(81-91) B	85	85
(69-80) C		
(55-68) D		
(39-54) E		
(21-38) F		
(1-20) G		
Not energy efficient - higher running costs		
England & Wales		EU Directive 2002/91/EC

Agents Note: Whilst every care has been taken to prepare these particulars, they are for guidance purposes only. All measurements are approximate and are for general guidance purposes only and whilst every care has been taken to ensure their accuracy, they should not be relied upon and potential buyers are advised to recheck the measurements.

besteestates
SALES | LETTINGS | MANAGEMENT