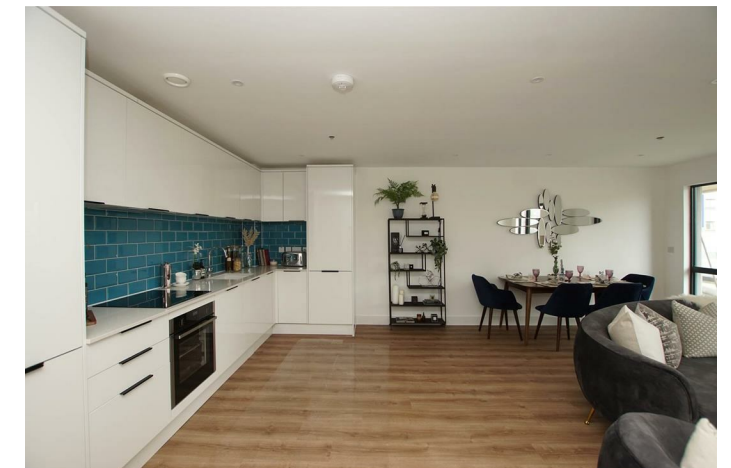
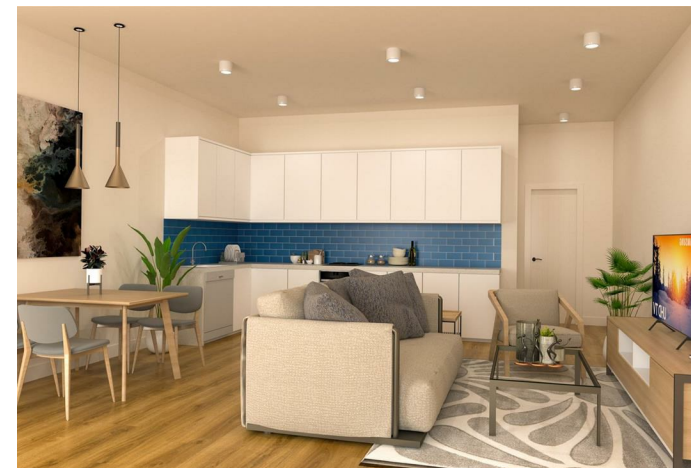


LEASEHOLD



APARTMENT (EPC RATING: B)

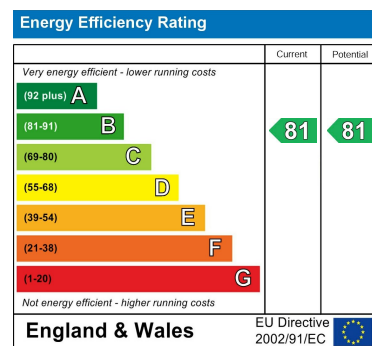
**B8 THE ARC B8 THE ARC HARBOUR ROAD,  
PORTISHEAD, BRISTOL, BS20 7AJ**

**£325,000**

Council Tax Band

**C**

Energy Performance Graph



Call us on

**01173259721**

**sales@bestestates.co.uk**

Agents Note: Whilst every care has been taken to prepare these particulars, they are for guidance purposes only. All measurements are approximate and are for general guidance purposes only and whilst every care has been taken to ensure their accuracy, they should not be relied upon and potential buyers are advised to recheck the measurements.

bestestates  
SALES | LETTINGS | MANAGEMENT

bestestates  
SALES | LETTINGS | MANAGEMENT



## 2 Bedroom Apartment located in Bristol

SHOW APARTMENT AVAILABLE FOR VIEWINGS.

Perfectly positioned on the fringes of Portishead Marina, ARC is home to 26 new apartments. With 1, 2 and 3 bedroom homes available, including a penthouse with panoramic views, all apartments are finished to a high specification and a lift to all floors.

Apartment A-12 2 Bedrooms | Bathrooms

Located in the heart of Portishead, there is an abundance of independent shops, bars and restaurants, all within walking distance of ARC. Whether you're looking to enjoy dinner with friends, a stroll around the shops or a day at the beach, get ready to explore this vibrant neighbourhood.

With secure parking, video entry system and panoramic views, this property is not to be missed.

### Bathroom

2.1m x 1.7m (6' 11" x 5' 7")

### Bedroom 2

4m x 2.4m (13' 1" x 7' 10")

### Master Bedroom

4m x 2.9m (13' 1" x 9' 6")

### Living Room/Kitchen/Diner

6m x 5.2m (19' 8" x 17' 1")

### Full Description

SHOW APARTMENT AVAILABLE FOR VIEWINGS.

Perfectly positioned on the fringes of Portishead Marina, ARC is home to 26 new apartments. With 1, 2 and 3 bedroom homes available, including a penthouse with panoramic views, all apartments are finished to a high specification and a lift to all floors.

Apartment A-12 2 Bedrooms | Bathrooms

Located in the heart of Portishead, there is an abundance of independent shops, bars and restaurants, all within walking distance of ARC.

Whether you're looking to enjoy dinner with friends, a stroll around the shops or a day at the beach, get ready to explore this vibrant neighbourhood.

With secure parking, video entry system and panoramic views, this property is not to be missed.

