



£500 pcm

1 Bedroom House Share to rent  
52 Turnpike Close, Worcester







## Overview

Are EWE looking for a quiet house share with parking and a garden?

Located at the end of the cul de sac, Room One is a garden facing room on the ground floor, in this professional licensed HMO, Fully Furnished, Single occupancy only.



## Key Features

- Parking available
- Double room for Single occupancy
- High speed Broadband included
- Large Open plan communal areas
- Enclosed garden
- All utilities included



Are EWE looking for a quiet house share with parking and a garden?

Located at the end of the cul de sac, Room One is a garden facing room on the ground floor, in this professional licensed HMO, Fully Furnished, Single occupancy only. This could be for EWE? The shared shower room, re fitted in 2023, is shared with 5 other residents. There is a generous kitchen, with washing machine and tumble dryer.

The dining area and lounge lead onto the south facing garden.

Broadband is also provided by this landlord. There is also a large 65" smart TV in the communal lounge.

All utilities and Council Tax are included.

Minimum 12-month tenancy.

Viewings strictly by appointment only.

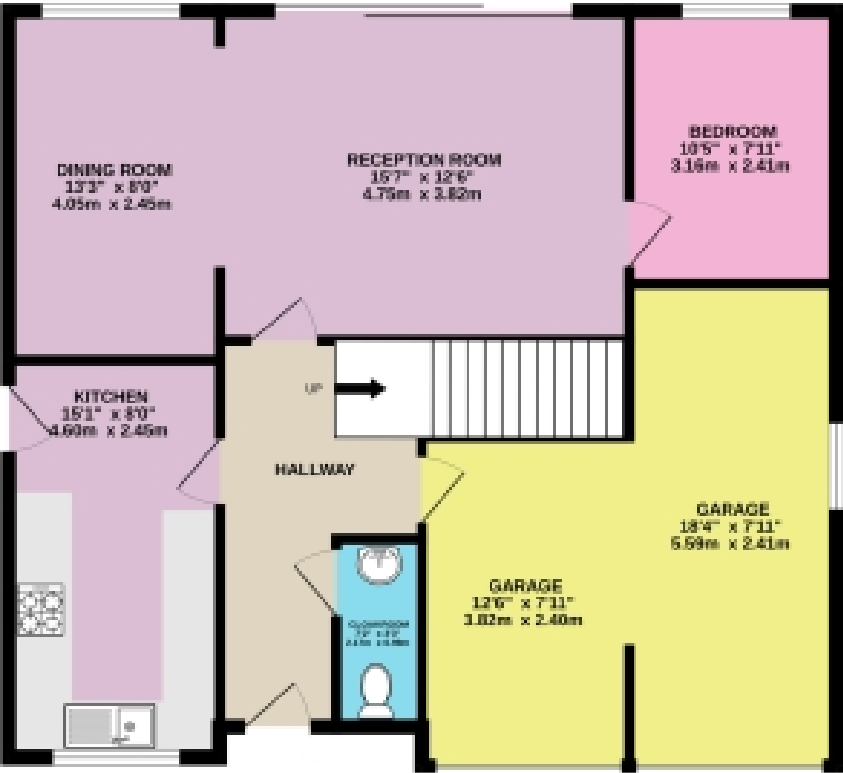
Available after 24th September. References and credit checks required.



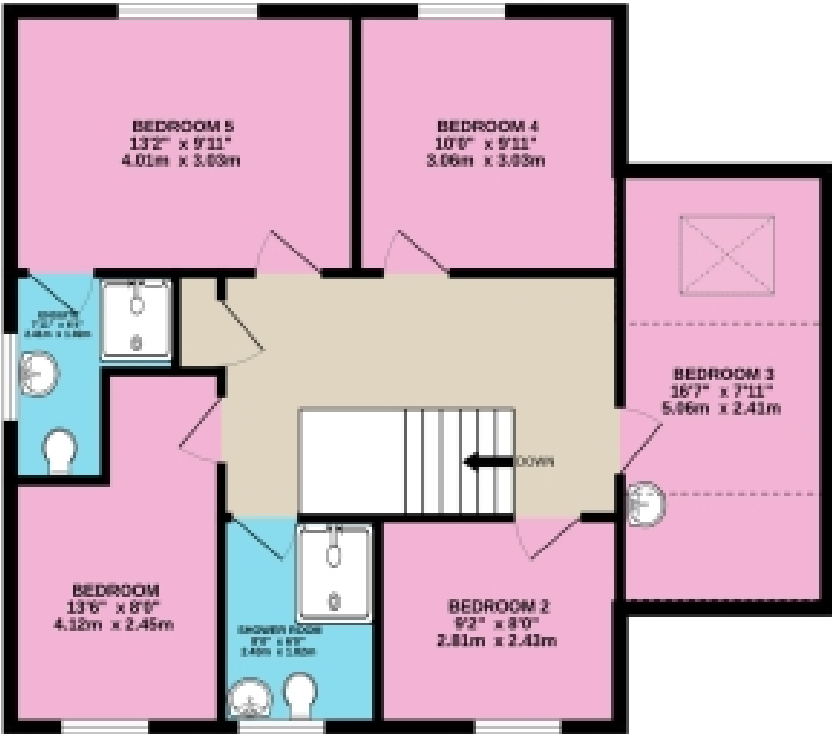


# Floorplans

GROUND FLOOR  
890 sq.ft. (82.7 sq.m.) approx.



1ST FLOOR  
762 sq.ft. (70.8 sq.m.) approx.



HMO 6 BEDROOM

TOTAL FLOOR AREA : 1652 sq.ft. (153.5 sq.m.) approx.

Whilst every attempt has been made to ensure the accuracy of the floorplan contained here, measurements of doors, windows, rooms and any other items are approximate and no responsibility is taken for any error, omission or mis-statement. This plan is for illustrative purposes only and should be used as such by any prospective purchaser. The services, systems and appliances shown have not been tested and no guarantee as to their operability or efficiency can be given.

Made with Metropix ©2023



# Floorplans

GROUND FLOOR  
890 sq.ft. (82.7 sq.m.) approx.

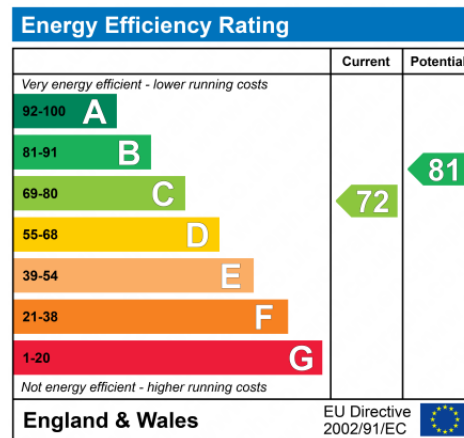


1ST FLOOR  
762 sq.ft. (70.8 sq.m.) approx.



HMO 6 BEDROOM  
TOTAL FLOOR AREA : 1652 sq.ft. (153.5 sq.m.) approx.

For illustrative purposes only. Decorative finishes, fixtures, fittings and furnishings do not represent the current state of the property. Measurements are approximate. Not to scale.  
Made with Metropix © 2023







Marketed by Ewemove Worcester East

01905 967991 (24/7)  
worcestereast@ewemove.com

