



£1,500 pcm

4 Bedroom Flat to rent

202a Dereham Road, New Costessey, Norwich



EweMove
SALES AND LETTINGS



Overview

Spacious 3/4-bed furnished flat near amenities, university, and transport links-ideal for students-book your viewing today!



Key Features

- Conveniently Positioned 3/4 Bed First Floor Flat
- Furnished
- Good Parking
- Outdoor Space
- Shower Over Bath
- Good Transport Links
- Close to Longwater Retail Park
- Available October 2025



Welcome to this spacious 3/4-bedroom first-floor flat, perfect for students seeking convenience, comfort, and excellent amenities.

This furnished flat features three generously sized double bedrooms and a fourth single room that could be used as a study/communal space, each equipped with a comfortable bed and storage options, one with a built in cupboard, others with wardrobes and drawers. The kitchen is fully equipped with modern appliances including a fridge-freezer, oven, hob, washing machine and microwave, ensuring meal preparation is a breeze. With a practical layout and design, this flat is tailor-made for student lifestyle. There is also access to a garden shared with the ground floor flat, where you can hang washing or just enjoy some sunshine.

Location Highlights:

- Close to Longwater Retail Park: A short journey away, offering access to a range of shops, supermarkets, eateries, and other essential services.
- Walkable Distance to the University: Located within a manageable walking distance, making those early lectures more bearable and providing an opportunity to enjoy the vibrant student atmosphere.
- Excellent Transport Links: With easy access to the A47, commuting in and around Norwich is effortless. Additionally, there are reliable transport links to the city centre, offering quick access to Norwich's buzzing cultural scene, nightlife, and historic attractions.

This property combines convenience, practicality, and a great location, making it an ideal choice for students. Don't miss the opportunity to secure this for your next academic year, contact us now to arrange a viewing!



Bedroom 1

13' 11" x 10' 4" (4.24m x 3.15m)

Large double bedroom with bay window to front.

Ceiling light, sockets, radiator, double bed, wardrobe, chest of drawers.

Bedroom 2

12' 4" x 10' 4" (3.76m x 3.15m)

Large double bedroom with window overlooking garden

Ceiling light, sockets, radiator, built in storage cupboard, double bed, wardrobe, chest of drawers.

Bedroom 3

12' 0" x 8' 6" (3.66m x 2.59m)

Smaller double bedroom with window to the front

Ceiling light, sockets, radiator, bed, wardrobe, desk, chest of drawers

Bedroom 4/Living Space

8' 6" x 8' 2" (2.59m x 2.49m)

Could be used as a fourth bedroom as a single or a communal area for dining/study.

Ceiling light, sockets, radiator, desk, chairs.

Kitchen

9' 3" x 6' 3" (2.82m x 1.91m)

Fitted kitchen with fitted appliances and white goods included with window overlooking garden.

Fridge/Freezer, Microwave, Washing machine, Electric Hob, Oven, Sockets, Ceiling Lights and Sockets.

Bathroom

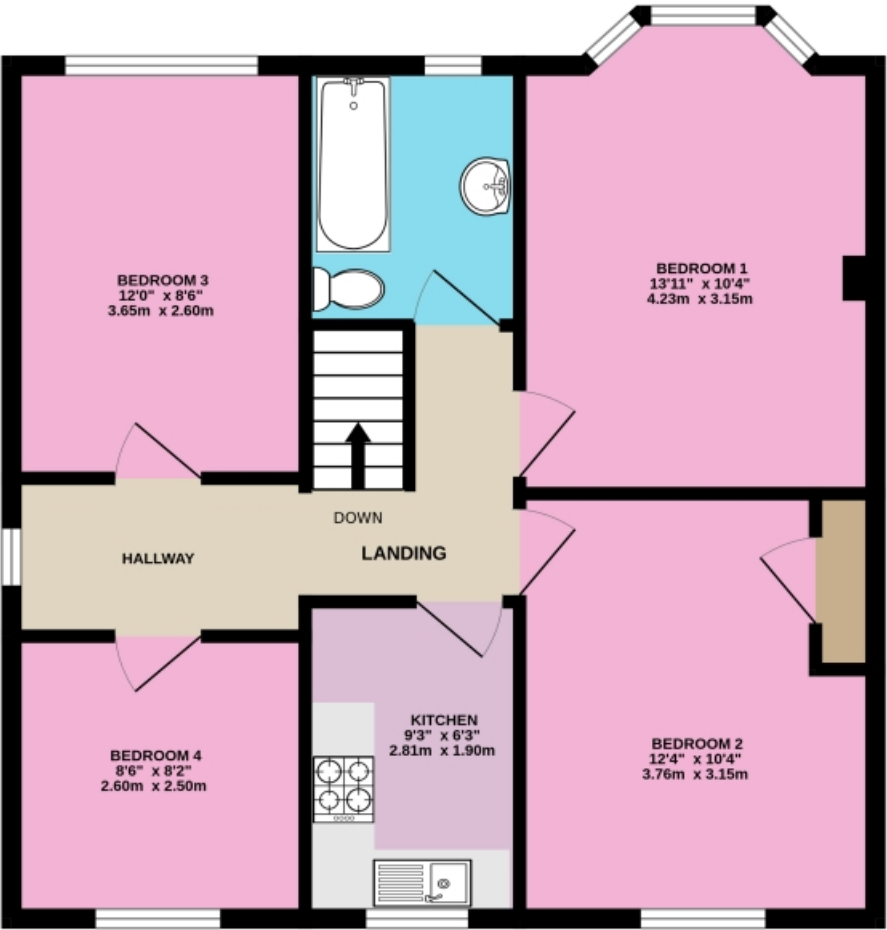
7' 6" x 6' 2" (2.30m x 1.90m)

3 piece bathroom with shower over bath, toilet and sink

Ceiling light

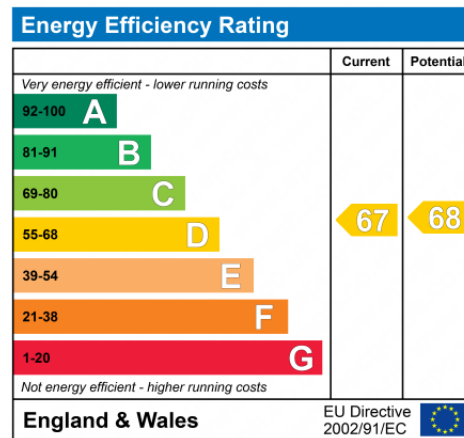
Floorplans

FIRST FLOOR
626 sq.ft. (58.2 sq.m.) approx.



4-BEDROOM FIRST FLOOR FLAT
TOTAL FLOOR AREA : 626 sq.ft. (58.2 sq.m.) approx.

Whilst every attempt has been made to ensure the accuracy of the floorplan contained here, measurements of doors, windows, rooms and any other items are approximate and no responsibility is taken for any error, omission or mis-statement. This plan is for illustrative purposes only and should be used as such by any prospective purchaser. The services, systems and appliances shown have not been tested and no guarantee as to their operability or efficiency can be given.
Made with Metropix ©2025





Marketed by Ewemove Wymondham

01953 665 785 (24/7)
wymondham@ewemove.com

