



Plough Way

London, SE16

£2,250 per month
(£519.23 per week)

A spacious three-bedroom apartment arranged over two floors. The property features a large reception room, separate kitchen, private balcony, 3 bedrooms, modern shower room and separate W.C.



Plough Way

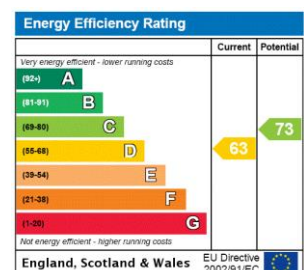
London, SE16

- 3 Bedroom Apartment
- Private Balcony
- Split Level
- Well Presented

A spacious three-bedroom apartment arranged over two floors. The property features a large reception room, with private balcony, separate kitchen, three bedrooms, modern shower room, a separate WC and has Hyperoptic installed.

Canada Water & Rotherhithe are charming areas situated south of the river Thames. The area is well connected via Canada Water, Surrey Quays and Rotherhithe stations as well as the river taxi making The City and Canary Wharf easily accessible. Although residents can enjoy walks along the banks of the river to Shad Thames which is home to array of bars and restaurants, the area also boasts many of its own amenities including Surrey Quays shopping centre and cinema.

Minimum Term: months
Deposit Required: £2,596.15
Local Authority: London Borough of Southwark
Council Tax Band: C
EPC Rating: D
Furnished



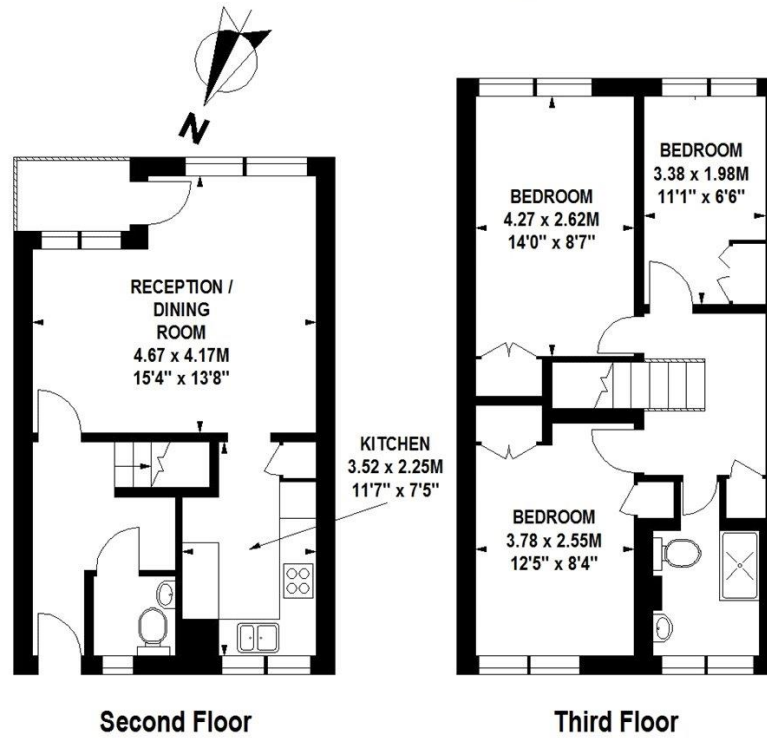
Chestertons Tower Bridge Lettings

220 Tower Bridge Road
Tower Bridge
London
SE1 2UP
towerbridge@chestertons.co.uk
02073576911
chestertons.co.uk

Additional tenant charges apply (fees apply to non-AST tenancies only)
Tenancy Agreement Fee: £300
References per Tenant/Guarantor: £60
Inventory check (approx. £100 – £250 inc. VAT)
chestertons.co.uk/property-to-rent/applicable-fees

Plough Way, SE16

Approximate Gross Internal Area 77 sq m / 829 sq ft



Floor Plan produced for Chestertons by Mays Floorplans © . Tel 020 3397 4594

Illustration for identification purposes only, not to scale

All measurements are maximum, and include wardrobes and window bays where applicable

