



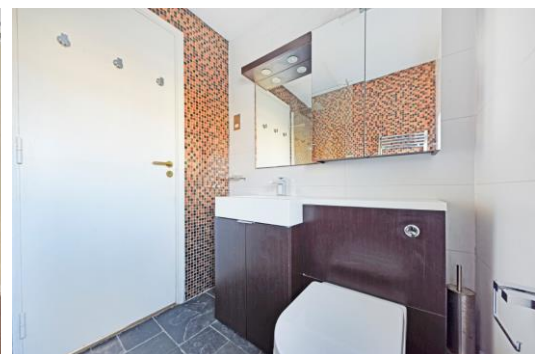
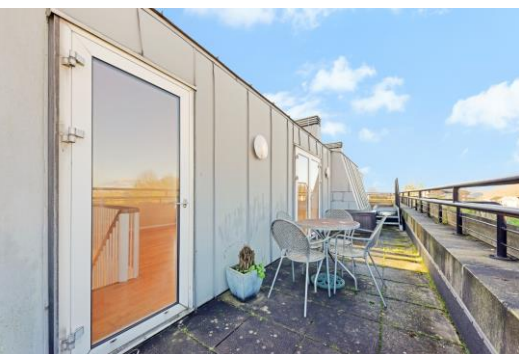
Queen of Denmark Court

London, SE16

£2,200 per month
(£507.69 per week)

An amazing split level two bedroom flat.

The property comprises two double bedroom, modern bathroom , separate kitchen/dinner and large reception with direct access to the roof terrace.



Queen of Denmark Court

London, SE16

- SPLIT LEVEL
- TWO BEDROOM
- MODERN BATHROOM
- LARGE RECEPTION
- ROOF TERRACE



An amazing split level two bedroom flat.
The property comprises two double bedroom, modern bathroom ,
separate kitchen/dinner and large reception with direct access to the
roof terrace.

Minimum Term: 12 months
Deposit Required: £2,538.46
Local Authority: London Borough of Southwark (Council Tax)
Council Tax Band: D
EPC Rating: C
Furnished

Energy Efficiency Rating		
	Current	Potential
Very energy efficient - lower running costs		
A (92-100)		
B (81-91)		
C (69-80)	77	77
D (55-68)		
E (39-54)		
F (21-38)		
G (1-20)		
Not energy efficient - higher running costs		
England, Scotland & Wales EU Directive 2002/91/EC		

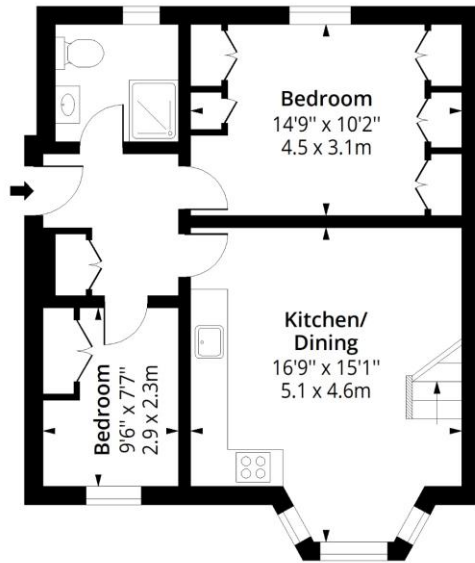
Chestertons Tower Bridge Lettings

220 Tower Bridge Road
Tower Bridge
London
SE1 2UP
towerbridge@chestertons.co.uk
02073576911
chestertons.co.uk

Additional tenant charges apply (fees apply to non-AST tenancies only)
Tenancy Agreement Fee: £300
References per Tenant/Guarantor: £60
Inventory check (approx. £100 – £250 inc. VAT)
chestertons.co.uk/property-to-rent/applicable-fees

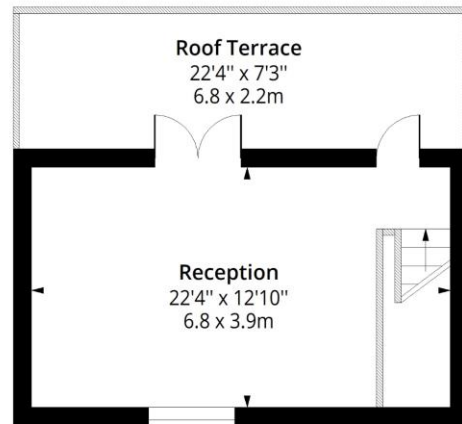
Queen Of Denmark Court, SE16

Approx. Gross Internal Area 869 Sq Ft - 80.73 Sq M
Approx. Gross Roof Terrace Area 171 Sq Ft - 15.89 Sq M



Third Floor

Floor Area 582 Sq Ft - 54.07 Sq M



Fourth Floor

Floor Area 287 Sq Ft - 26.66 Sq M



Measured according to RICS IPMS2. Floor plan is for illustrative purposes only and is not to scale. Every attempt has been made to ensure the accuracy of the floor plan shown, however all measurements, fixtures, fittings and data shown are an approximate interpretation for illustrative purposes only. 1 sq m = 10.76 sq feet.

lpaplus.com

Date: 29/11/2023



This paper is
100% recyclable