



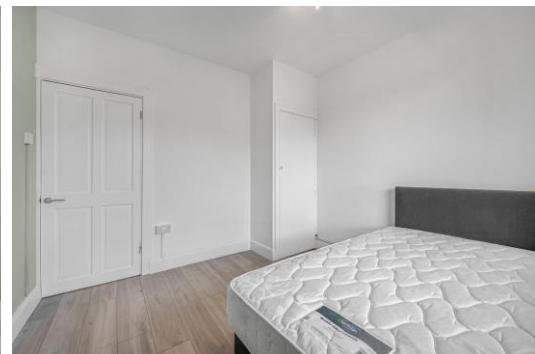
# Westfield House

Rotherhithe New Road, SE16

£2,600 per month  
(£600 per week)

A three doubled bedroom apartment situated just moments away from Surrey Quays and Canada Water stations, offering excellent connections to both the City and Canary Wharf.

**CHESTERTONS**



# Westfield House

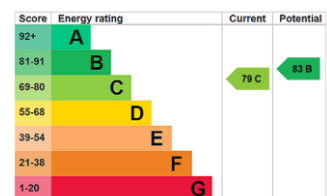
Rotherhithe New Road, SE16

- THREE BEDROOMS
- MODERN BATHROOM
- FURNISHED
- NEWLY DECORATED



A three doubled bedroom apartment situated just moments away from Surrey Quays and Canada Water stations, offering excellent connections to both the City and Canary Wharf.

**Minimum Term:** 12 months  
**Deposit Required:** £3,000.00  
**Local Authority:** London Borough of Southwark  
**Council Tax Band:** C  
**EPC Rating:** C  
**Furnished, Unfurnished**



### *Chestertons Surrey Quays Lettings*

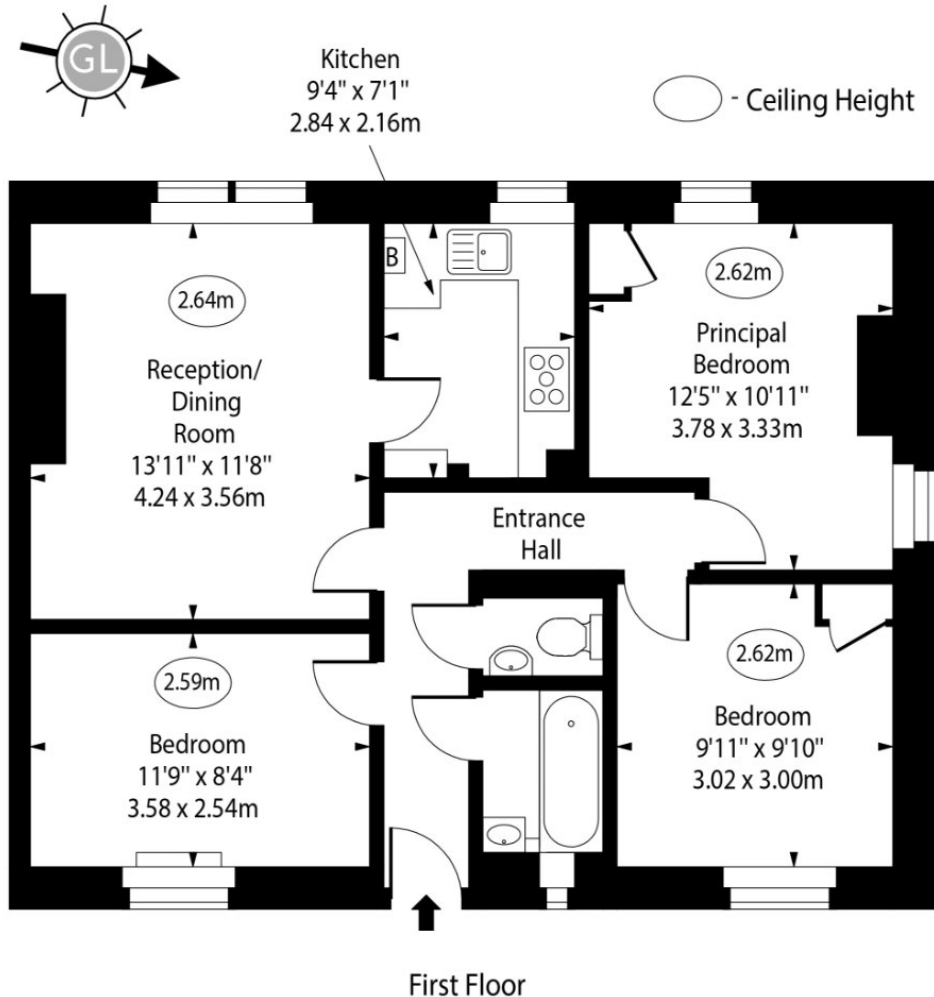
2 Plough Way  
 London  
 SE16 2EU

+44 (0)20 7378 0644  
[chestertons.co.uk](http://chestertons.co.uk)

Additional tenant charges apply (fees apply to non-AST tenancies only)  
 Tenancy Agreement Fee: £300  
 References per Tenant/Guarantor: £60  
 Inventory check (approx. £100 – £250 inc. VAT)  
[chestertons.co.uk/property-to-rent/applicable-fees](http://chestertons.co.uk/property-to-rent/applicable-fees)



Westfield House,  
Rotherhithe New Road, SE16



Approx Gross Internal Area 695 Sq Ft - 64.57 Sq M

Every attempt has been made to ensure the accuracy of the floor plan shown. However, all measurements, fixtures, fittings, and data shown are approximate interpretations and for illustrative purposes only.

Measured according to the RICS IPMS 2. Not To Scale.

[www.goldlens.co.uk](http://www.goldlens.co.uk)

Ref. No. 028186M

