



# Princes Riverside Road

London, SE16

£4,000 pcm

A stylish and recently refurbished modern Townhouse set within a riverside gated development. Arranged over four floors this immaculate home benefits from a spacious open plan kitchen/living room with balcony, a well maintained rear garden, three beautifully refurbished bathrooms and own drive.

**CHESTERTONS**





# Princes Riverside Road

## London, SE16

- Modern Townhouse
- Recently Refurbished
- Well Maintained Garden
- Three Bathrooms
- Driveway
- Garage





Canada Water & Rotherhithe are charming areas situated south of the river Thames. The area is well connected via Canada Water, Surrey Quays and Rotherhithe stations as-well as the river taxi making The City and Canary Wharf easily accessible. Although residents can enjoy walks along the banks of the river to Shad Thames which is home to array of bars and restaurants, the area also boasts many of its own amenities including Surrey Quays shopping centre and cinema.

**Tenure:** To be advised  
**Furnished, Part Furnished,**  
 ... ..

Additional tenant charges apply (fees apply to non-AST tenancies only)  
 Tenancy Agreement Fee: £300  
 References per Tenant/Guarantor: £60  
 Inventory check (approx. £100 – £250 inc. VAT)  
[chestertons.com/property-to-rent/applicable-fees](https://www.chestertons.com/property-to-rent/applicable-fees)

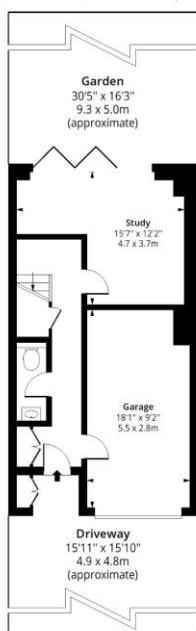
Energy Efficiency Rating		
	Current	Potential
Very energy efficient - lower running costs		
A (94-100)		
B (81-93)		85
C (69-80)	74	
D (55-68)		
E (39-54)		
F (21-38)		
G (1-20)		
Not energy efficient - higher running costs		
England, Scotland & Wales		EU Directive 2002/91/EC

### Chestertons Tower Bridge Lettings

220 Tower Bridge Road  
 Tower Bridge  
 London  
 SE1 2UP  
[lettings.towerbridge@chestertons.com](mailto:lettings.towerbridge@chestertons.com)  
 02073576911  
[chestertons.com](https://www.chestertons.com)

# Princes Riverside Road, SE16

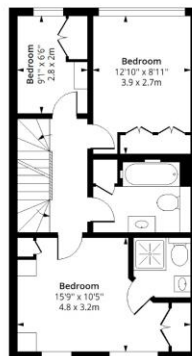
Approx. Gross Internal Area 1698 Sq Ft - 157.74 Sq M (Excluding Eaves Storage/Balcony)  
Approx. Gross Internal Area 1920 Sq Ft - 178.37 Sq M (Including Eaves Storage/Balcony)



**Ground Floor**  
Floor Area 466 Sq Ft - 43.29 Sq M



**First Floor**  
Floor Area 488 Sq Ft - 45.33 Sq M



**Second Floor**  
Floor Area 496 Sq Ft - 46.07 Sq M



**Third Floor**  
Floor Area 248 Sq Ft - 23.04 Sq M

Floor plan is for illustrative purposes only and is not to scale. Every attempt has been made to ensure the accuracy of the floor plan shown, however all measurements, fixtures, fittings and data shown are an approximate interpretation for illustrative purposes only.

lpaplus.com

