



Rotherhithe Street

London, SE16

£4,250 per month
(£980.77 per week)

SHORT LET* Two bedroom warehouse conversion with amazing river views. The property comprises open-plan living space/kitchen two double bedrooms and modern bathrooms.



Rotherhithe Street

London, SE16

- SHORT LET
- TWO BEDROOM
- OPEN PLAN
- RIVER FACING



SHORT LET* Two bedroom warehouse conversion with amazing river views. The property comprises open-plan living space/kitchen two double bedrooms and modern bathrooms.

Minimum Term: 2 months
Deposit Required: £4,903.85
Local Authority: London Borough of Southwark
Council Tax Band: E
EPC Rating: To be confirmed

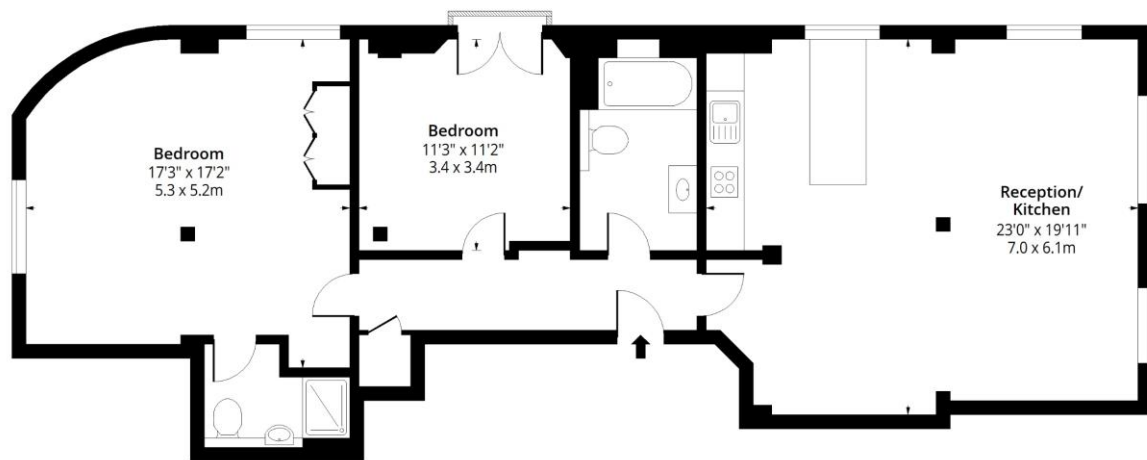
Chestertons Tower Bridge Lettings

220 Tower Bridge Road
Tower Bridge
London
SE1 2UP
towerbridgelettingsusers@chestertons.co.uk
02073576911
chestertons.co.uk

Additional tenant charges apply (fees apply to non-AST tenancies only)
Tenancy Agreement Fee: £300
References per Tenant/Guarantor: £60
Inventory check (approx. £100 – £250 inc. VAT)
[chestertons.co.uk/property-to-rent/applicable-fees](https://www.chestertons.co.uk/property-to-rent/applicable-fees)

Grices Wharf Apartments, SE16

Approx. Gross Internal Area 1052 Sq Ft - 97.73 Sq M



Second Floor

Floor Area 1052 Sq Ft - 97.73 Sq M



Measured according to RICS IPMS2. Floor plan is for illustrative purposes only and is not to scale. Every attempt has been made to ensure the accuracy of the floor plan shown, however all measurements, fixtures, fittings and data shown are an approximate interpretation for illustrative purposes only. 1 sq m = 10.76 sq feet.

lpaplus.com

Date: 29/11/2024



This paper is
100% recyclable