



Westminster Court

King & Queen Wharf, SE16

Guide Price £280,000

Being Sold via Secure Sale online bidding. Terms & Conditions apply. Starting Bid £280,000

This modern and spacious 1-bedroom apartment is located in the prestigious Westminster Court at King & Queen Wharf. Situated on the 3rd floor with a south-facing orientation, the apartment is filled with natural light throughout the day. It features a well-appointed living space, a separate fully equipped kitchen, and contemporary finishes.

Residents enjoy premium amenities including 24-hour concierge service, secure underground parking, and dedicated bike storage. The complex also offers exclusive access to luxurious leisure facilities, such as a fully equipped gym, an indoor swimming pool, a relaxing spa, and a sauna, all situated along the scenic riverfront. Perfect for both comfort and convenience.

CHESTERTONS



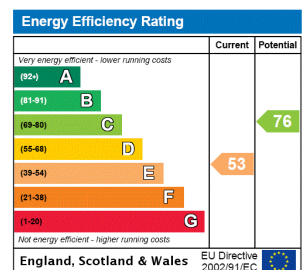
Westminster Court

King & Queen Wharf, SE16

- 1 Bedroom
- Separate Kitchen
- 24 hour Concierge
- Underground Parking & Bike storage
- Gym Facilities
- Swimming pool, Spa and Sauna



Tenure: Leasehold 963 years 5 months
Service Charge: £7900
Ground Rent: £15
Local Authority: Southwark Council
Council Tax Band: E



Chestertons Surrey Quays Sales

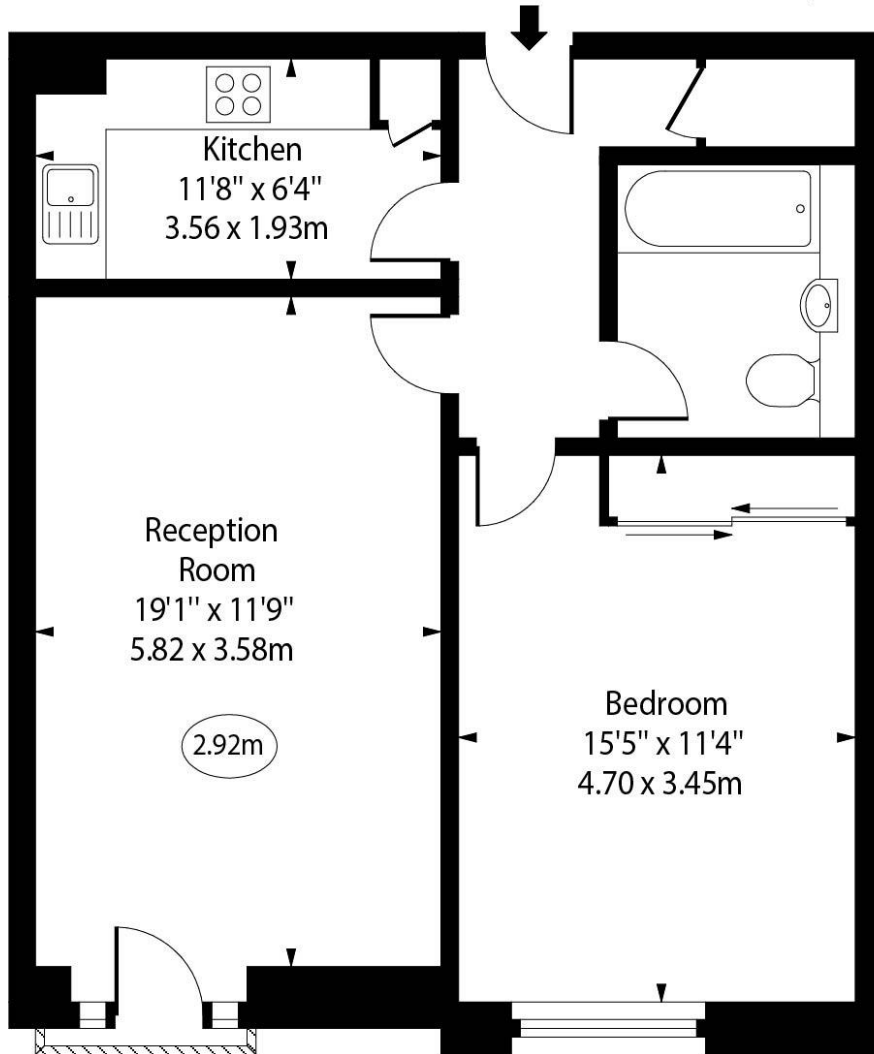
2 Plough Way
London
SE16 2EU

+44 (0)20 7378 0644
chestertons.co.uk

Westminster Court,
Rotherhithe Street, SE16



○ - Ceiling Height



Third Floor

Approx Gross Internal Area 614 Sq Ft - 57.04 Sq M

For Illustration Purposes Only - Not To Scale

www.goldlens.co.uk

Ref. No. 025533K

